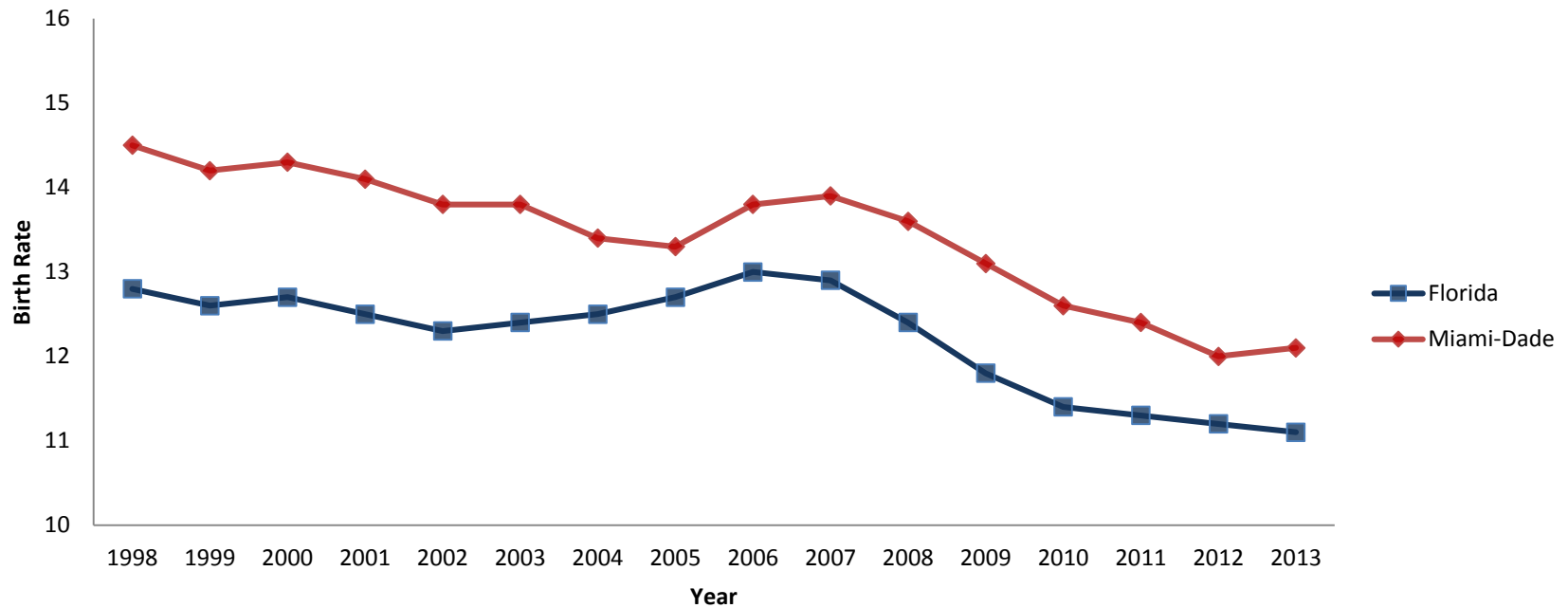


### Resident Live Birth Rate (per 1,000 population) Florida and Miami-Dade County, 1998-2013



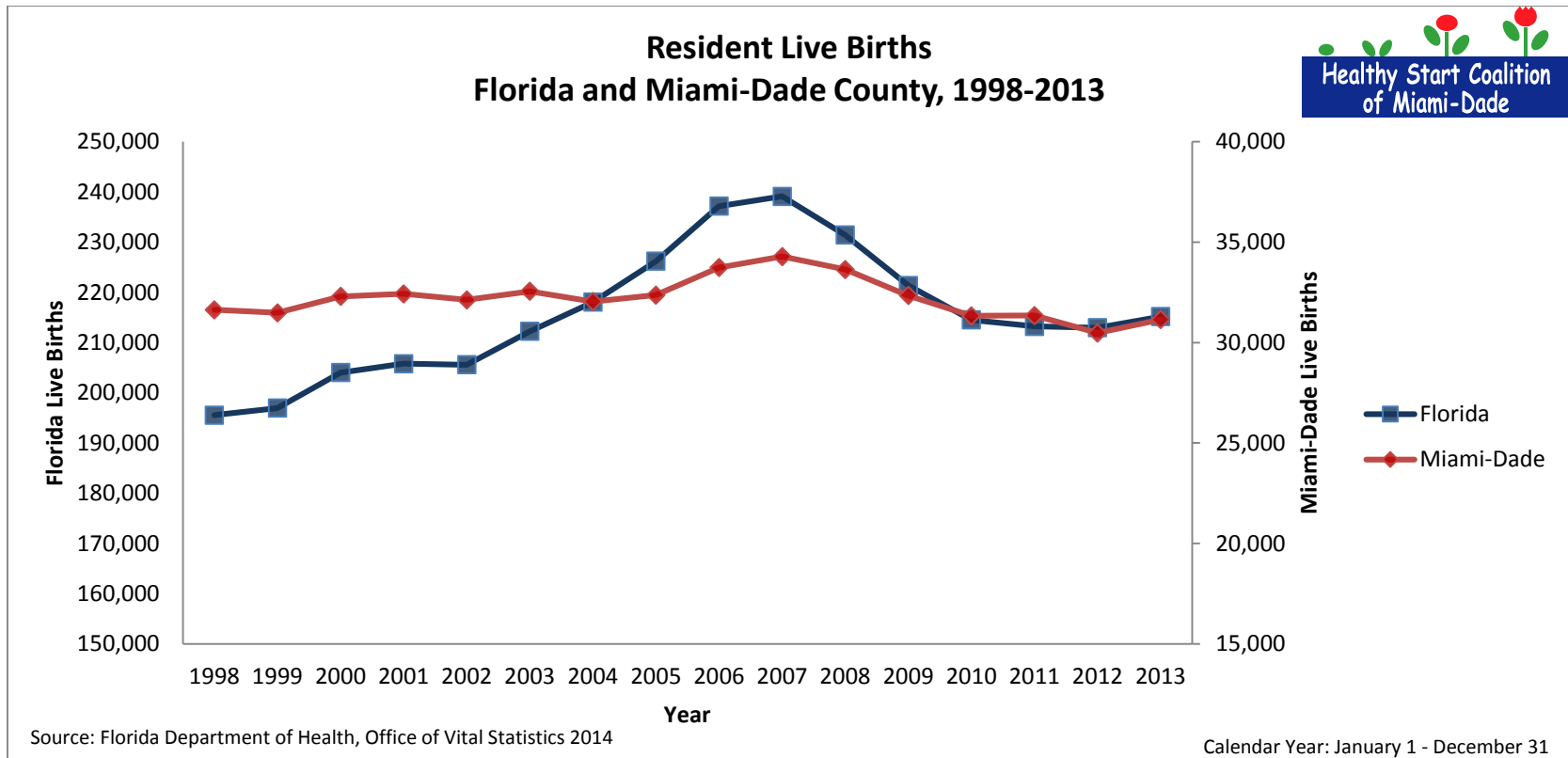
Source: Florida Department of Health, Office of Vital Statistics 2014

Calendar Year: January 1 - December 31

### Resident Live Birth Rate (per 1,000 population) Florida and Miami-Dade County, 1998-2013

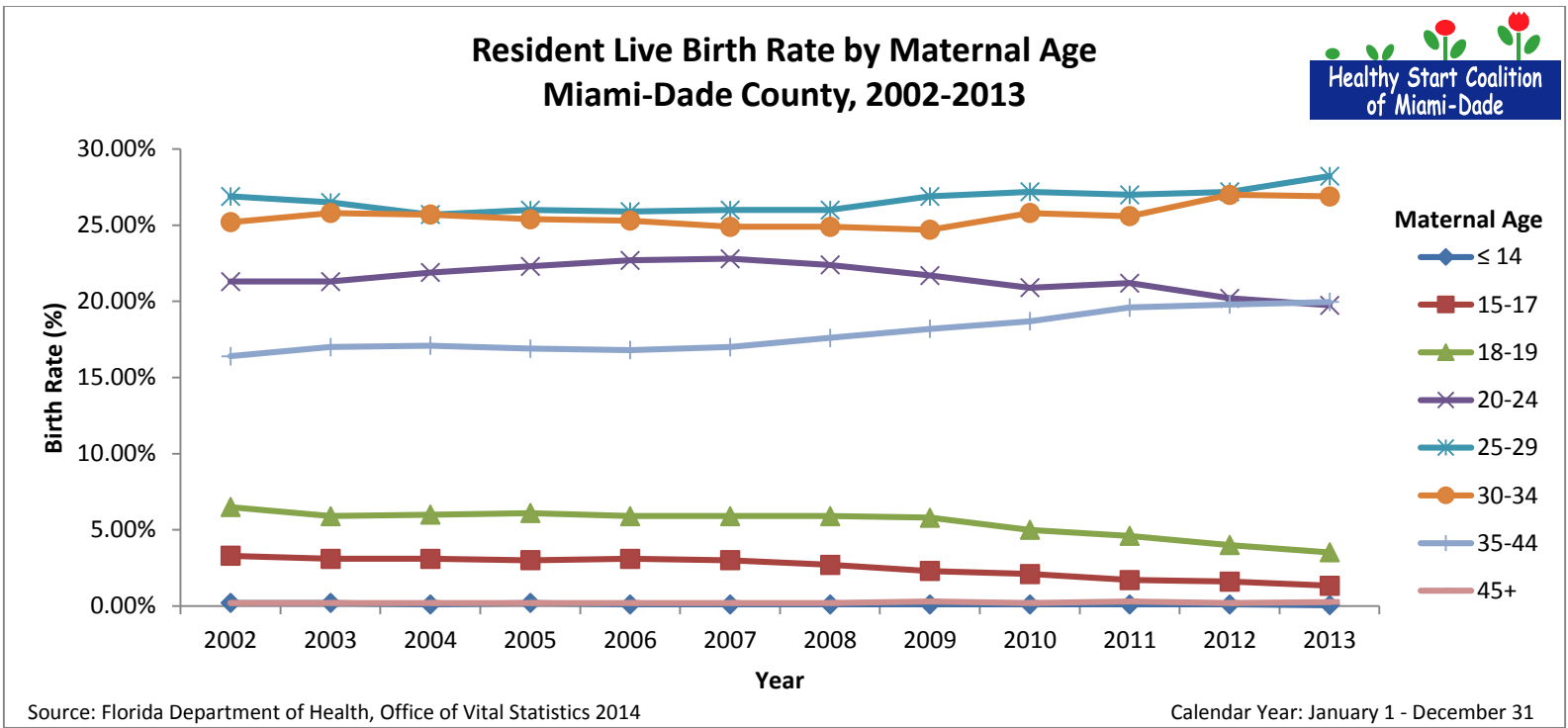
	1998	1999	New Data Source	2000	2001	2002	2003	2004	New Formula for Birth Rate	2005	2006	2007	2008	2009	2010	2011	2012	2013
<b>Florida</b>	12.8	12.6		12.7	12.5	12.3	12.4	12.4		12.6	12.9	12.8	12.4	11.8	11.4	11.3	11.2	11.1
<b>Miami-Dade</b>	14.5	14.2	14.3	14.1	13.8	13.8	13.4	13.3	13.8	13.9	13.6	13.1	12.6	12.4	12.0	12.1		

Source: State of Florida Department of Health, Office of Vital Statistics, Bureau of Economic and Business Research, University of Florida.

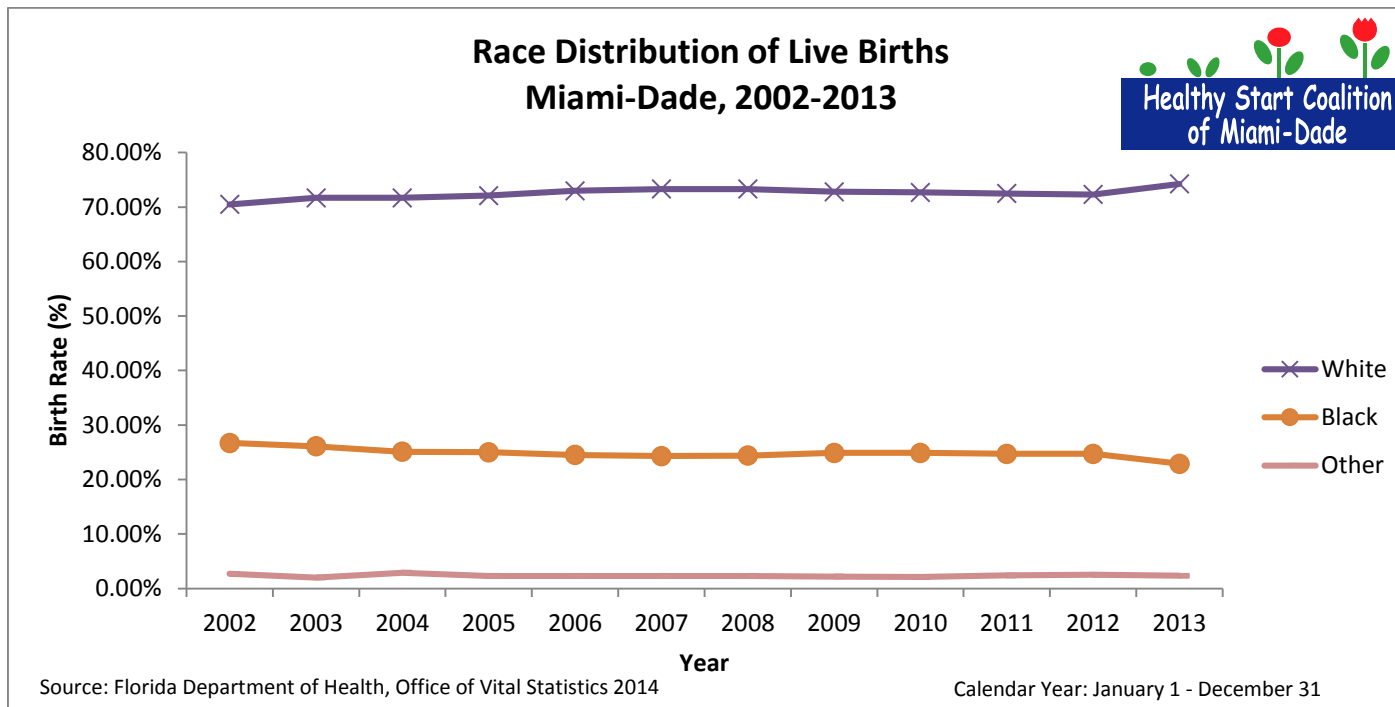


Resident Live Births Florida and Miami-Dade County, 1998-2013																		
	1998	1999	New Data Source	2000	2001	2002	2003	2004	New Formula for Birth Rate	2005	2006	2007	2008	2009	2010	2011	2012	2013
<b>Florida</b>	195,564	196,963		204,030	205,800	205,580	212,243	218,045		226,219	237,166	239,120	231,417	221,391	214,519	213,237	212,954	215,194
<b>Miami-Dade</b>	31,631	31,484		32,300	32,425	32,131	32,551	32,045		32,365	33,739	34,286	33,639	32,341	31,335	31,349	30,479	31,147

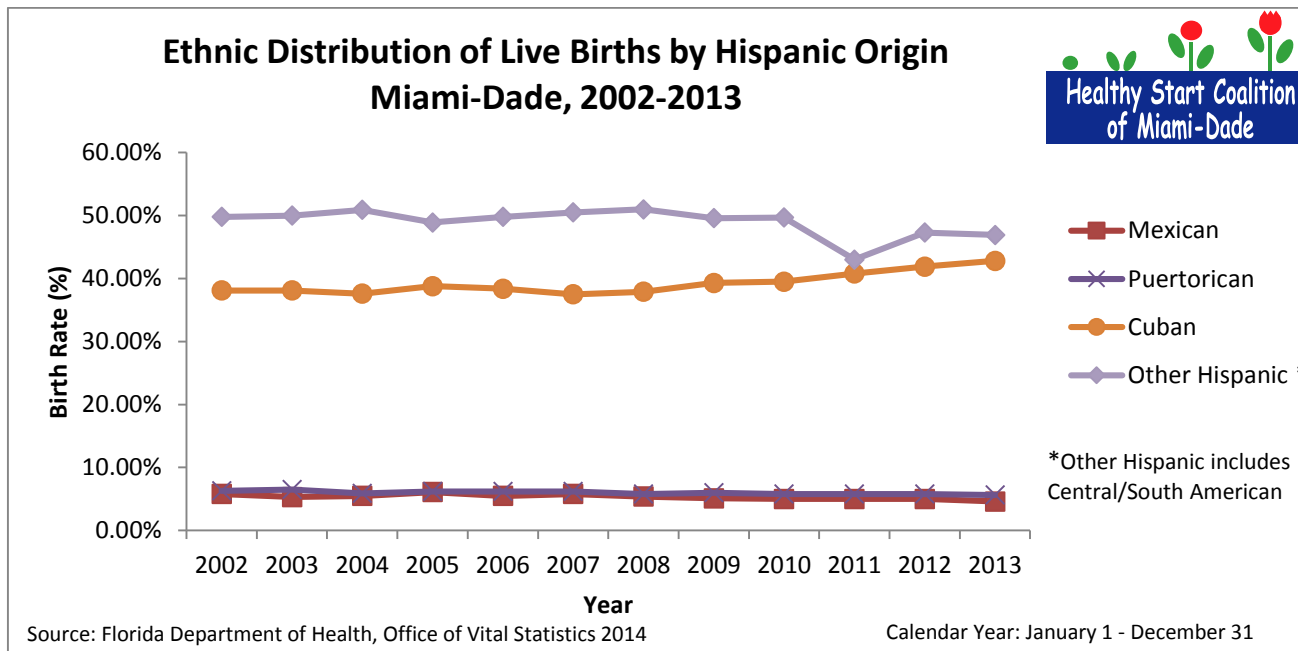
Source: State of Florida Department of Health, Office of Vital Statistics, Bureau of Economic and Business Research, University of Florida.



Resident Live Birth Rate (per 1,000 women in specified group) by Maternal Age Miami-Dade County, 2002-2013												
	2002	2003	2004	2005	2006	2007	2008	2009	2010	2011	2012	2013
≤ 14	0.20%	0.20%	0.10%	0.20%	0.10%	0.10%	0.10%	0.10%	0.10%	0.10%	0.10%	0.05%
15-17	3.30%	3.10%	3.10%	3.00%	3.10%	3.00%	2.70%	2.30%	2.10%	1.70%	1.60%	1.33%
18-19	6.50%	5.90%	6.00%	6.10%	5.90%	5.90%	5.90%	5.80%	5%	4.60%	4.00%	3.53%
20-24	21.30%	21.30%	21.90%	22.30%	22.70%	22.80%	22.40%	21.70%	20.90%	21.20%	20.20%	19.74%
25-29	26.90%	26.50%	25.70%	26.00%	25.90%	26.00%	26.00%	26.90%	27.20%	27.00%	27.20%	28.22%
30-34	25.20%	25.80%	25.70%	25.40%	25.30%	24.90%	24.90%	24.70%	25.80%	25.60%	27.00%	26.90%
35-44	16.40%	17.00%	17.10%	16.90%	16.80%	17.00%	17.60%	18.20%	18.70%	19.60%	19.80%	19.97%
45+	0.20%	0.20%	0.20%	0.20%	0.20%	0.20%	0.20%	0.30%	0.20%	0.30%	0.20%	0.26%

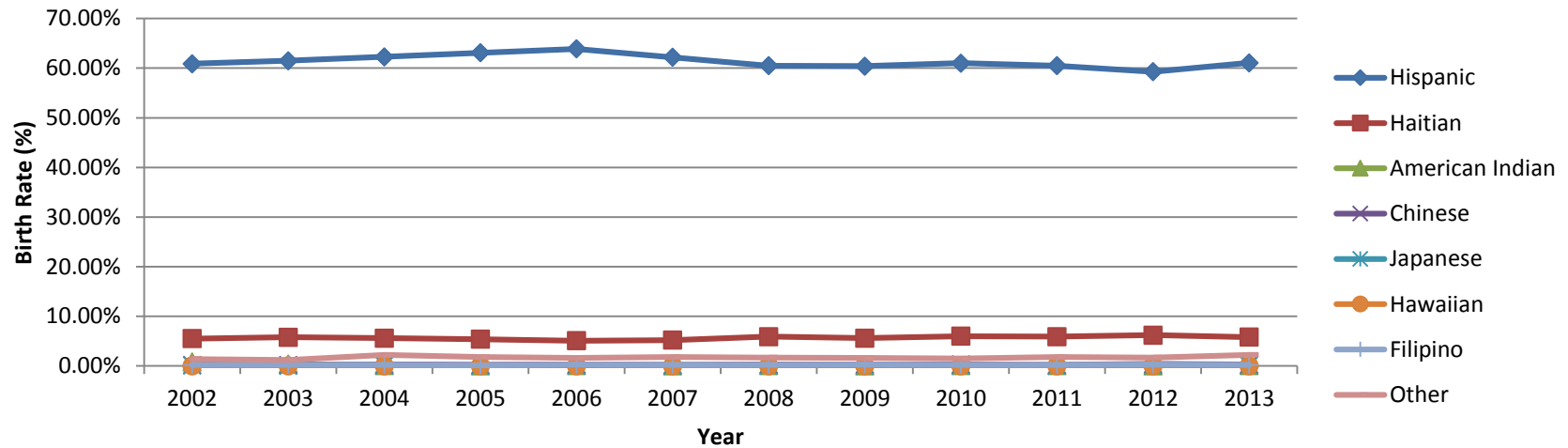


Race Distribution of Live Births Miami-Dade, 2002-2013													
		2002	2003	2004	2005	2006	2007	2008	2009	2010	2011	2012	2013
<b>White</b>	<b>Number</b>	22,654	23,350	22,970	23,334	24,630	25,142	24,645	23,537	22,770	22,731	22,046	23,128
	<b>Percent</b>	70.50%	71.70%	71.70%	72.10%	73.00%	73.30%	73.30%	72.80%	72.70%	72.50%	72.30%	74.25%
<b>Black</b>	<b>Number</b>	8,573	8,497	8,037	8,107	8,282	8,336	8,219	8,052	7,790	7,745	7,542	7,131
	<b>Percent</b>	26.70%	26.10%	25.10%	25.00%	24.50%	24.30%	24.40%	24.90%	24.90%	24.70%	24.70%	22.89%
<b>Other</b>	<b>Number</b>	858	649	921	758	782	796	756	706	661	753	757	727
	<b>Percent</b>	2.70%	2.00%	2.90%	2.30%	2.30%	2.30%	2.30%	2.20%	2.10%	2.40%	2.50%	2.33%
<b>Total Births</b>	<b>Number</b>	32,131	32,551	32,045	32,365	33,739	34,286	33,639	32,341	31,335	31,349	30,479	31,147



Ethnic Distribution of Live Births by Hispanic Origin Miami-Dade, 2002-2013													
		2002	2003	2004	2005	2006	2007	2008	2009	2010	2011	2012	2013
<b>Mexican</b>	<b>Number</b>	1,139	1,059	1,097	1,237	1,193	1,241	1,090	991	951	951	904	876
	<b>Percent</b>	5.80%	5.30%	5.50%	6.10%	5.50%	5.80%	5.40%	5.10%	5.00%	5.00%	5.00%	4.61%
<b>Puerto Rican</b>	<b>Number</b>	1,225	1,309	1,171	1,266	1,343	1,330	1,180	1,176	1,115	1,104	1,044	1,073
	<b>Percent</b>	6.30%	6.50%	5.90%	6.20%	6.20%	6.20%	5.80%	6.00%	5.80%	5.80%	5.80%	5.64%
<b>Cuban</b>	<b>Number</b>	7,450	7,632	7,508	7,938	8,290	7,989	7,718	7,687	7,542	7,740	7,575	8,144
	<b>Percent</b>	38.10%	38.10%	37.60%	38.80%	38.40%	37.50%	37.90%	39.30%	39.50%	40.80%	41.90%	42.82%
<b>Other Hispanic</b>	<b>Number</b>	9,740	10,022	10,174	9,992	10,746	10,772	10,378	9,691	9,503	9,156	8,553	8,926
	<b>Percent</b>	49.80%	50.00%	50.90%	48.90%	49.80%	50.50%	51.00%	49.60%	49.70%	43.00%	47.30%	46.93%
<b>Total Hispanic</b>		<b>Number</b>	19,554	20,022	19,950	20,433	21,572	21,332	20,366	19,545	19,111	18,076	19,019

### Ethnic Distribution of Live Births Miami-Dade, 2002-2013

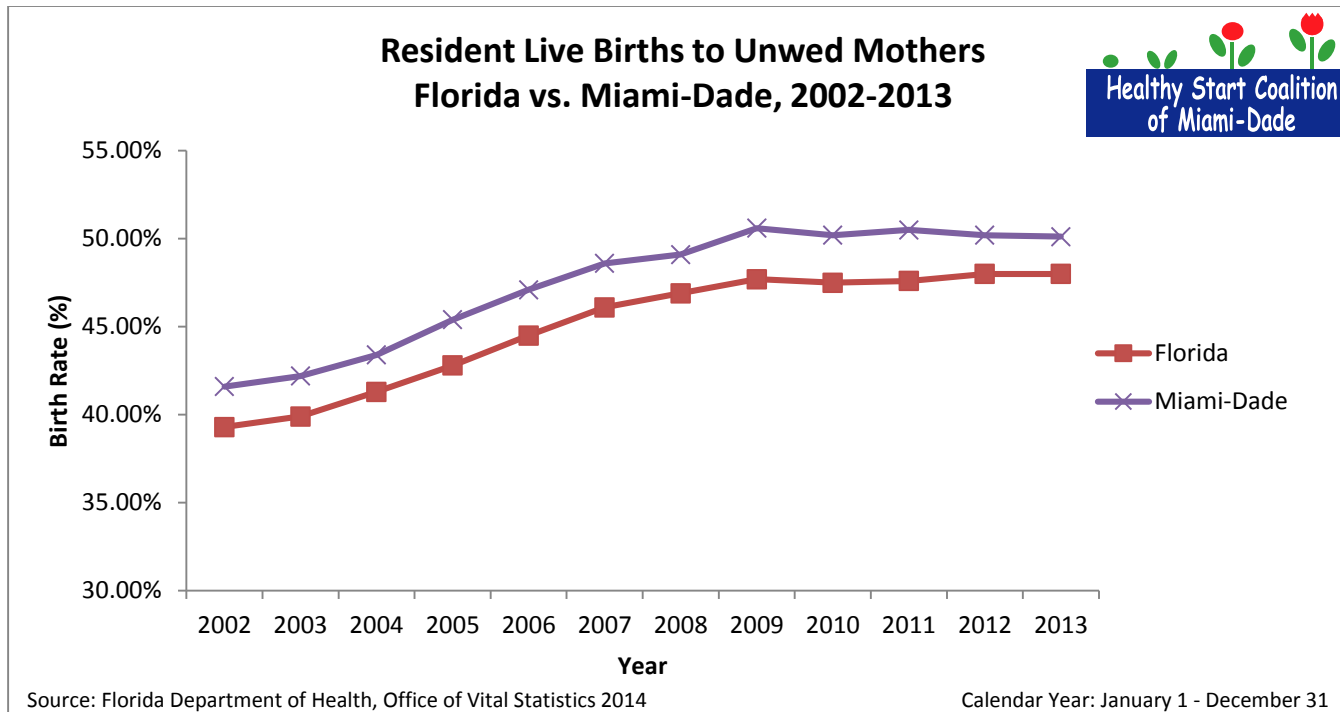


Source: Florida Department of Health, Office of Vital Statistics 2014

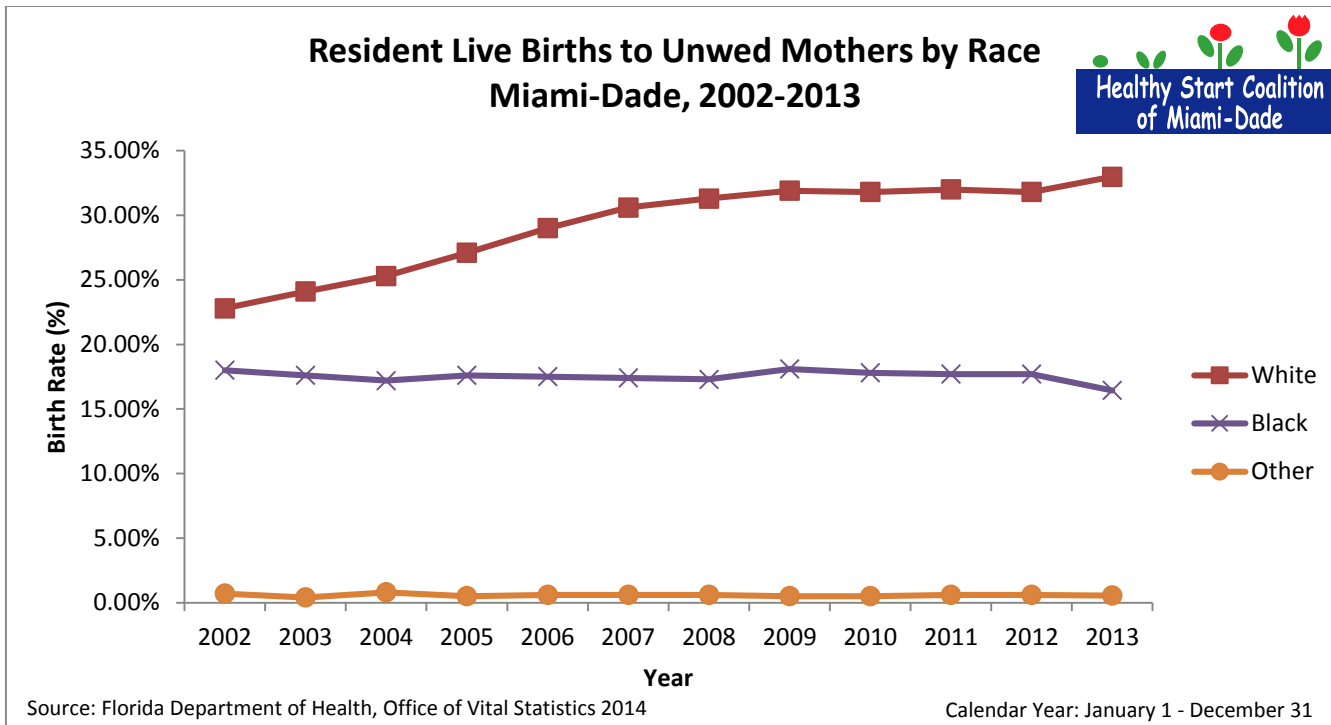
Calendar Year: January 1 - December 31

### Ethnic Distribution of Live Births Miami-Dade, 2002-2013

	2002	2003	2004	2005	2006	2007	2008	2009	2010	2011	2012	2013
<b>Hispanic</b>	60.90%	61.50%	62.30%	63.10%	63.90%	62.20%	60.50%	60.40%	61.00%	60.50%	59.30%	61.06%
<b>Haitian</b>	5.50%	5.80%	5.60%	5.40%	5.10%	5.20%	5.90%	5.60%	6.00%	5.90%	6.20%	5.81%
<b>American Indian</b>	0.80%	0.40%	0.10%	0.00%	0.10%	0.00%	0.10%	0.00%	0.10%	0.10%	0.00%	0.05%
<b>Chinese</b>	0.20%	0.20%	0.30%	0.20%	0.30%	0.20%	0.30%	0.30%	0.30%	0.20%	0.40%	0.30%
<b>Japanese</b>	0.10%	0.00%	0.10%	0.10%	0.10%	0.10%	0.10%	0.10%	0.10%	0.10%	0.10%	0.06%
<b>Hawaiian</b>	0.00%	0.00%	0.00%	0.00%	0.00%	0.00%	0.00%	0.00%	0.00%	0.00%	0.00%	0.00%
<b>Filipino</b>	0.20%	0.20%	0.20%	0.10%	0.30%	0.20%	0.20%	0.30%	0.20%	0.20%	0.30%	0.21%
<b>Other</b>	1.40%	1.20%	2.20%	1.80%	1.60%	1.80%	1.70%	1.60%	1.50%	1.80%	1.70%	2.23%
<b>Total Births</b>	32,131	32,551	32,045	32,365	33,739	34,286	33,639	32,341	31,335	31,349	30,479	31,147



Resident Live Births to Unwed Mothers Florida vs. Miami-Dade, 2002-2013													
		2002	2003	2004	2005	2006	2007	2008	2009	2010	2011	2012	2013
<b>Florida</b>	<b>Number</b>	80,833	84,733	89,976	96,895	105,570	110,160	108,484	105,654	101,810	101,466	102,135	103,303
	<b>Percent</b>	39.30%	39.90%	41.30%	42.80%	44.50%	46.10%	46.90%	47.70%	47.50%	47.60%	48.00%	48.00%
<b>Miami-Dade</b>	<b>Number</b>	13,362	13,741	13,908	14,691	15,889	16,679	16,524	16,362	15,729	15,817	15,299	15,611
	<b>Percent</b>	41.60%	42.20%	43.40%	45.40%	47.10%	48.60%	49.10%	50.60%	50.20%	50.50%	50.20%	50.12%



		2002	2003	2004	2005	2006	2007	2008	2009	2010	2011	2012	2013
<b>White</b>	<b>Number</b>	7,338	7,856	8,094	8,781	9,797	10,495	10,513	10,332	9,949	10,031	9,681	10,274
	<b>Percent</b>	22.80%	24.10%	25.30%	27.10%	29.00%	30.60%	31.30%	31.90%	31.80%	32.00%	31.80%	32.99%
<b>Black</b>	<b>Number</b>	5,799	5,731	5,523	5,706	5,891	5,966	5,806	5,840	5,567	5,563	5,396	5,120
	<b>Percent</b>	18.00%	17.60%	17.20%	17.60%	17.50%	17.40%	17.30%	18.10%	17.80%	17.70%	17.70%	16.44%
<b>Other</b>	<b>Number</b>	217	141	256	160	189	212	192	176	170	174	179	173
	<b>Percent</b>	0.70%	0.40%	0.80%	0.50%	0.60%	0.60%	0.60%	0.50%	0.50%	0.60%	0.60%	0.56%
<b>Total Births</b>	<b>Number</b>	32,131	32,551	32,045	32,365	33,739	34,286	33,639	32,341	31,335	31,349	30,479	31,147