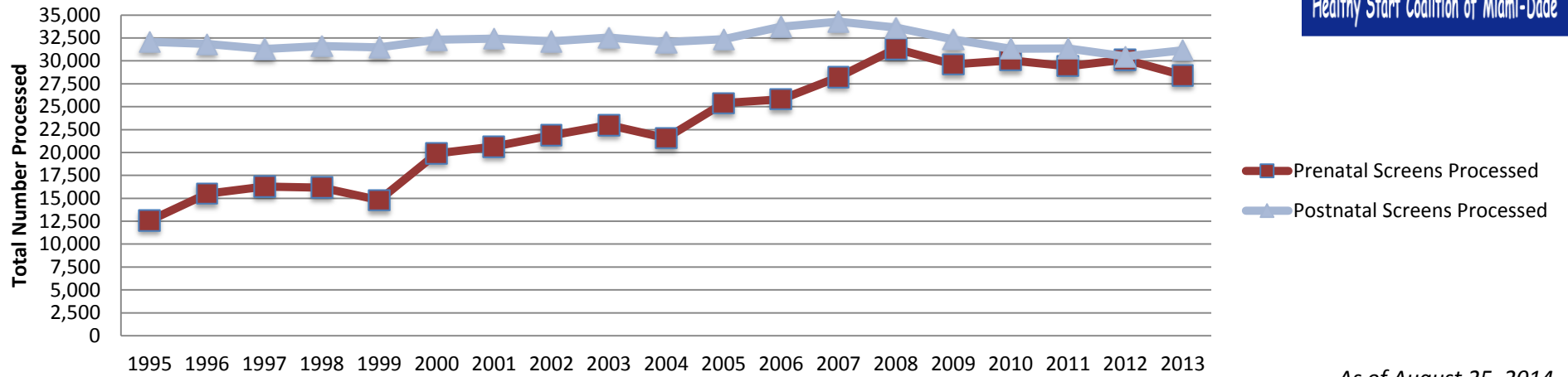


## Prenatal and Postnatal Screens Processed in Miami-Dade



*As of August 25, 2014*

Year	Prenatal Screens Processed	Postnatal Screens Processed
1995	12,569	32,089
1996	15,512	31,843
1997	16,288	31,302
1998	16,171	31,631
1999	14,795	31,484
2000	19,890	32,300
2001	20,646	32,425
2002	21,877	32,131
2003	22,989	32,551
2004	21,563	32,045
2005	25,391	32,365
2006	25,809	33,739
2007	28,226	34,286
2008	31,322	33,639
2009	29,623	32,341
2010	30,059	31,335
2011	29,428	31,349
2012	30,135	30,479
2013	28,423	31,147