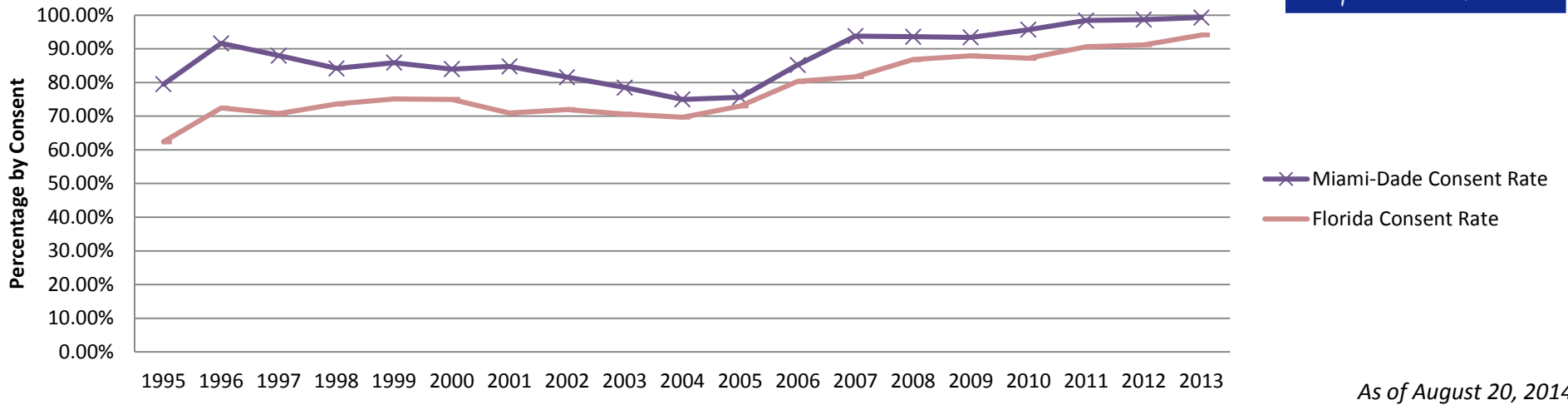


Postnatal Screens Consent Rate by Calendar Year



Year	Miami-Dade Consent Rate	Florida Consent Rate
1995	79.50%	62.40%
1996	91.60%	72.40%
1997	88.00%	70.80%
1998	84.20%	73.60%
1999	85.90%	75.10%
2000	84.00%	75.00%
2001	84.80%	70.90%
2002	81.60%	72.00%
2003	78.50%	70.60%
2004	75.00%	69.70%
2005	75.60%	73.00%
2006	85.20%	80.30%
2007	93.80%	81.70%
2008	93.60%	86.80%
2009	93.40%	87.90%
2010	95.70%	87.20%
2011	98.40%	90.60%
2012	98.70%	91.20%
2013	99.30%	94.10%