

# Annual Performance Summary



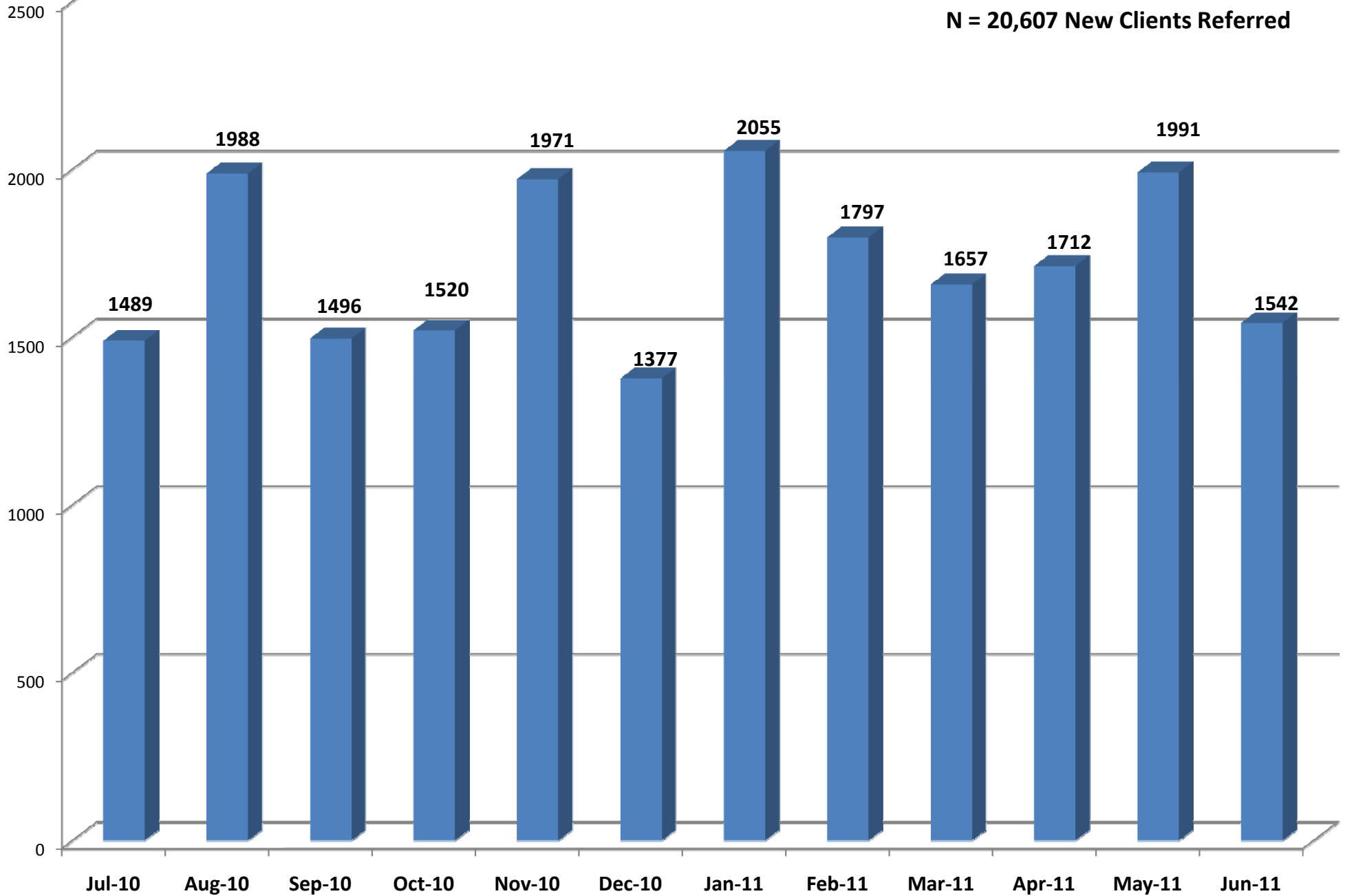
FY 2010 – 2011

## FYTD MomCare Stats by Month 2010 -2011

Item	Jul-10	Aug-10	Sep-10	Oct-10	Nov-10	Dec-10	Jan-11	Feb-11	Mar-11	Apr-11	May-11	Jun-11	Average
Referred by Fiscal Agent													
Received an attempt to contact	99.93%	99.90%	100.00%	99.93%	100.00%	100.00%	100.00%	99.94%	100.00%	99.88%	100.00%	99.94%	99.96%
Received an attempt to contact within 5 working days	99.93%	99.75%	99.93%	99.93%	99.95%	99.93%	100.00%	99.94%	99.94%	99.88%	100.00%	99.94%	99.93%
Successfully contacted	73.34%	67.40%	66.44%	65.39%	62.51%	71.24%	64.57%	69.84%	72.78%	73.07%	73.18%	73.28%	69.42%
Successfully contacted within 5 working days of referral	37.68%	37.12%	35.76%	36.18%	33.89%	36.17%	36.69%	38.79%	42.06%	44.74%	47.61%	47.67%	39.53%
Not successfully contacted	26.66%	32.60%	33.56%	34.61%	37.49%	28.76%	35.43%	30.16%	27.22%	26.93%	26.82%	26.72%	30.58%
Enrolled with a prenatal care provider	97.52%	97.18%	98.33%	97.63%	98.07%	98.18%	98.64%	98.78%	98.61%	98.60%	98.84%	98.18%	98.21%
Enrolled with a prenatal care provider within 30 days of referral	97.45%	97.13%	98.06%	97.57%	97.92%	98.11%	98.44%	98.55%	98.31%	98.54%	97.74%	97.99%	97.98%
Auto Assigned	19.01%	22.48%	23.60%	21.32%	26.08%	21.42%	27.15%	24.04%	22.45%	19.22%	22.05%	20.82%	22.47%
Received at least three (3) attempts to contact before being auto assigned	99.29%	99.78%	99.72%	99.07%	100.00%	99.66%	99.28%	100.00%	99.73%	100.00%	100.00%	99.69%	99.69%
Enrolled, not verbally contacted and received additional attempt to contact between day 31 and the end of month 5**	97.44%	97.97%	98.11%	98.73%	99.41%	99.01%	99.17%	98.60%	98.91%	99.61%	98.51%	97.64%	98.59%
Facilitated WIC	96.25%	95.90%	97.59%	95.98%	96.19%	96.94%	97.00%	97.37%	96.93%	96.96%	96.84%	96.28%	96.69%
Chose not to participate in Momcare refused consent	0.81%	0.96%	0.13%	0.39%	0.36%	0.51%	0.49%	0.33%	0.83%	0.48%	0.55%	0.62%	0.54%
Referred to the Healthy Start program	0.27%	0.15%	0.20%	0.13%	0.51%	0.58%	0.24%	0.22%	0.50%	0.48%	0.27%	0.09%	0.30%
Received follow-up from the MCA	98.19%	98.54%	99.40%	99.01%	99.29%	99.20%	99.42%	99.61%	99.22%	99.24%	99.35%	99.55%	99.17%
Received follow-up from the HSCC	1.01%	0.50%	0.47%	0.59%	0.36%	0.29%	0.10%	0.06%	0.18%	0.41%	0.25%	0.00%	0.35%
No Shows	0.13%	0.00%	0.00%	0.07%	0.20%	0.07%	0.05%	0.11%	0.08%	0.00%	0.00%	0.00%	0.06%
Ineligible Cases - man/child	0.81%	0.60%	0.27%	0.72%	0.56%	0.00%	0.34%	0.22%	0.24%	0.35%	0.25%	0.39%	0.40%
Ineligible cases - other	0.20%	0.20%	0.27%	0.39%	0.15%	0.36%	0.24%	0.22%	0.24%	0.41%	0.70%	0.19%	0.30%

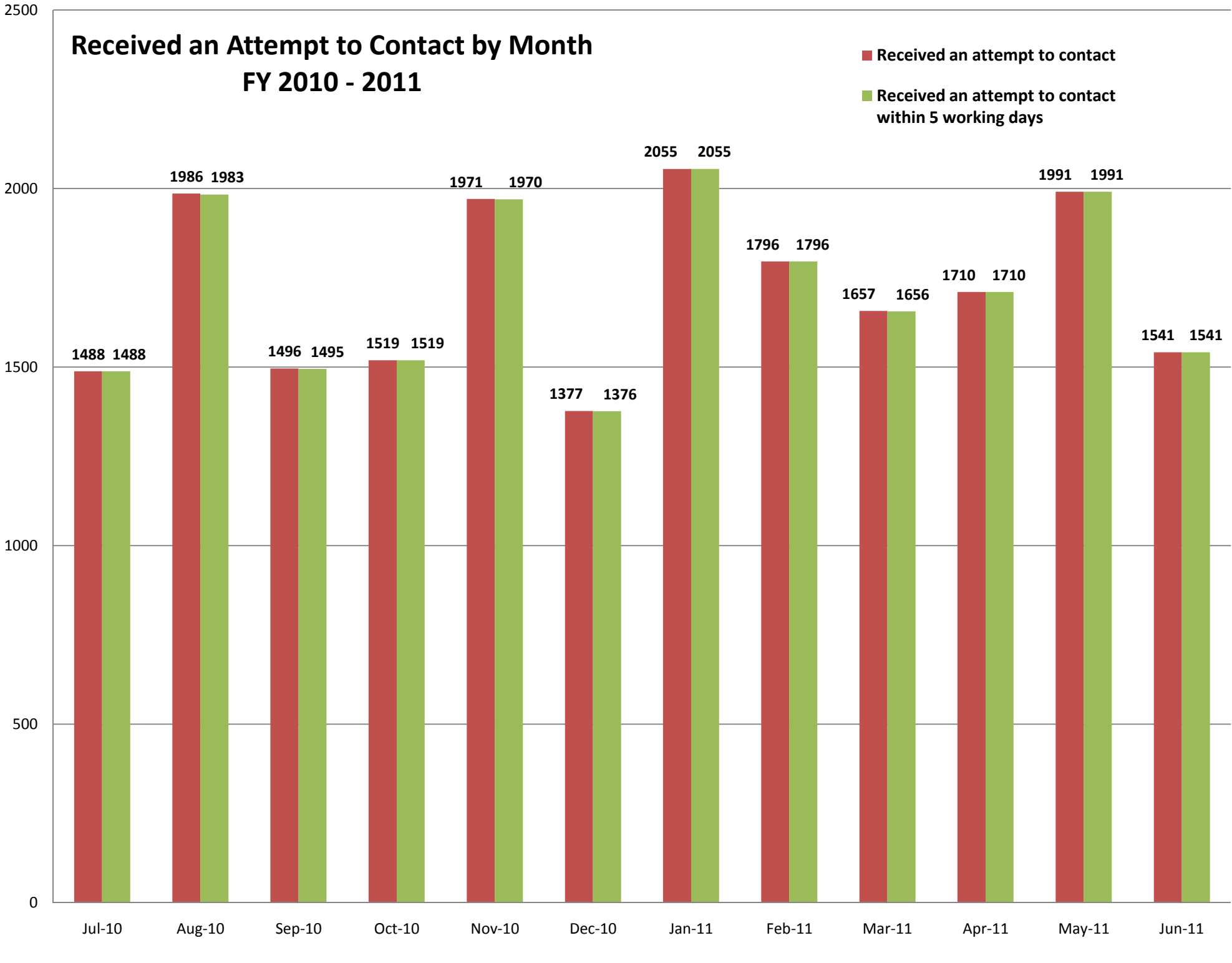
# Referred by Fiscal Agent FY 2010 - 2011

N = 20,607 New Clients Referred



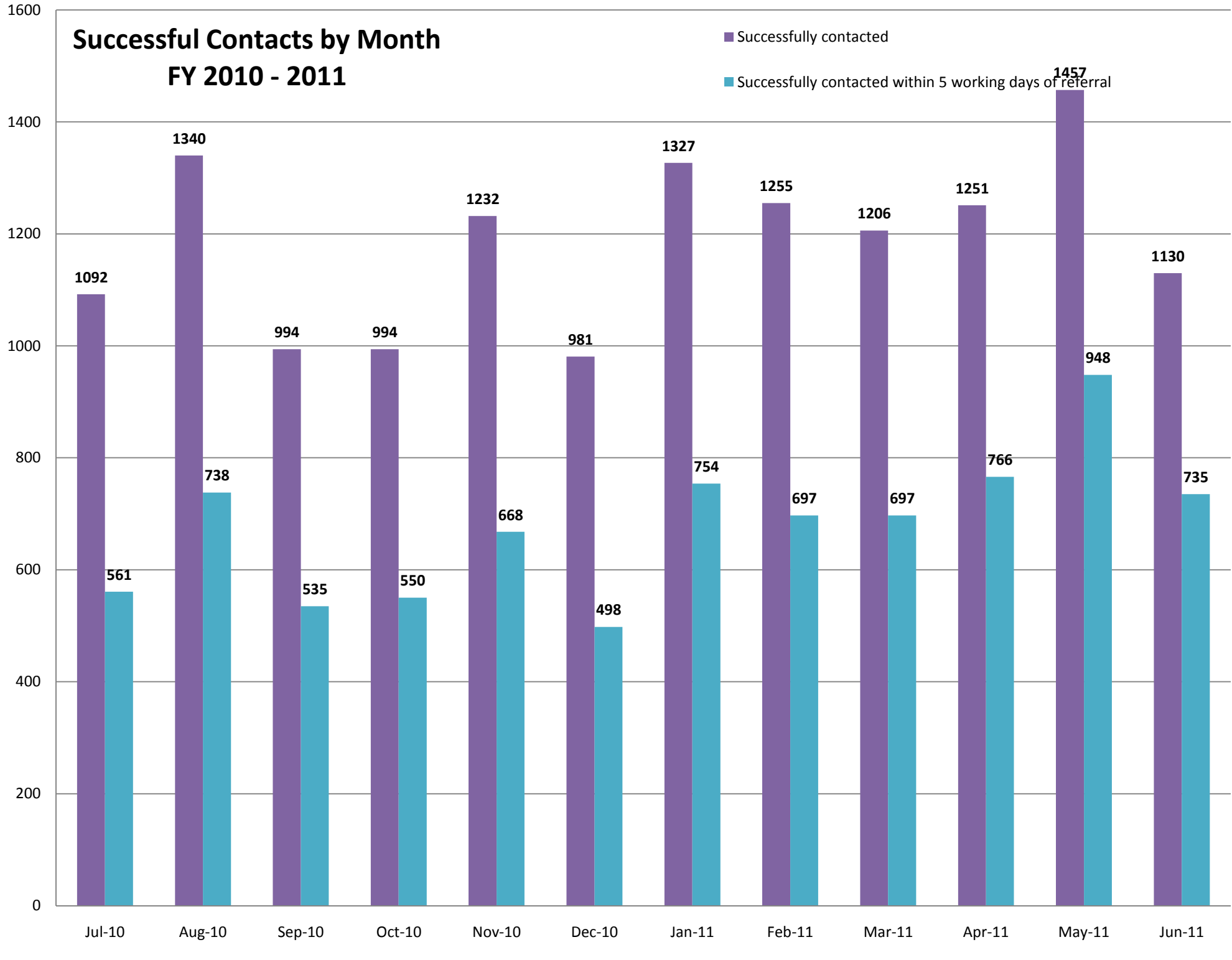
# Received an Attempt to Contact by Month FY 2010 - 2011

- Received an attempt to contact
- Received an attempt to contact within 5 working days



# Successful Contacts by Month FY 2010 - 2011

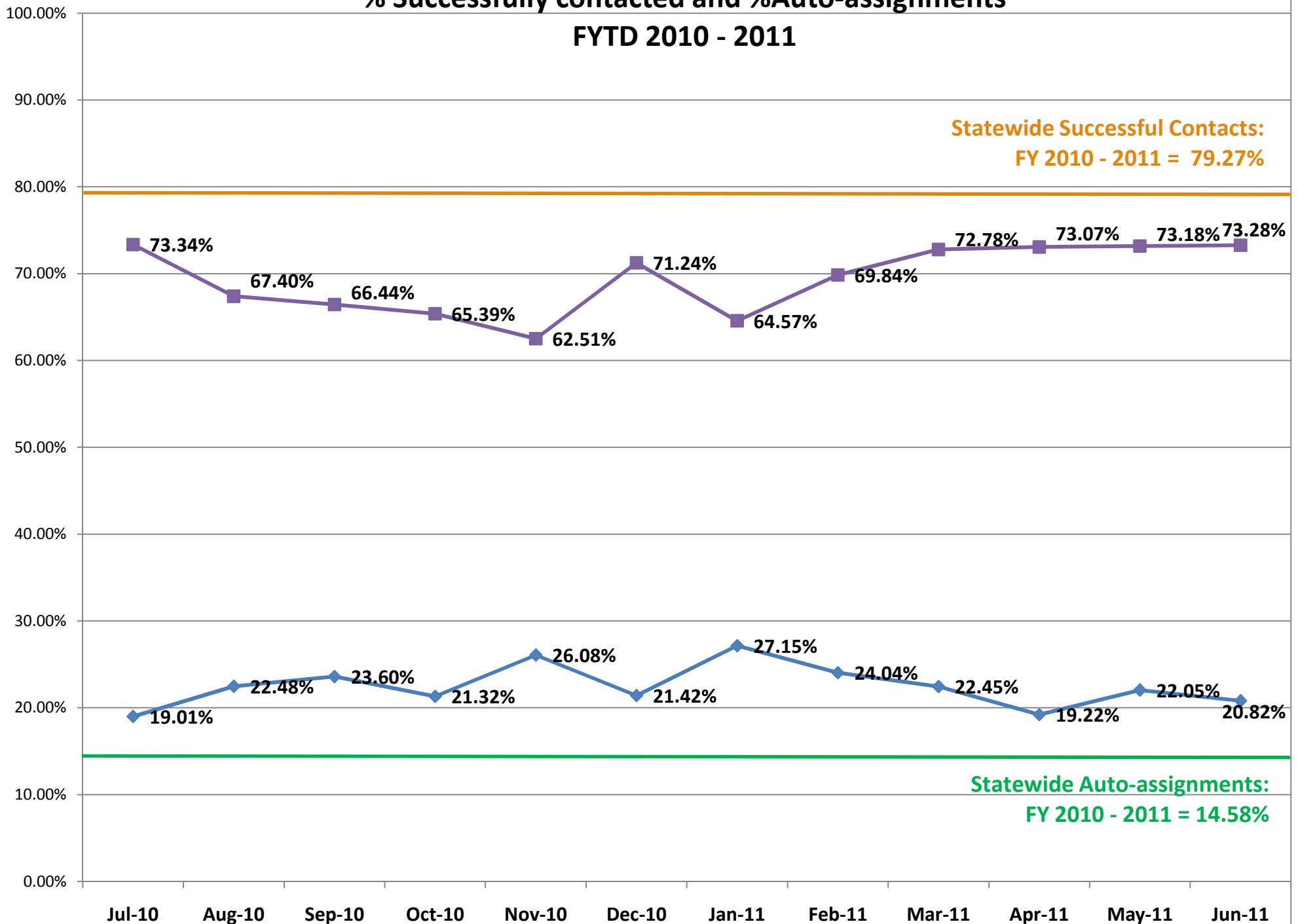
■ Successfully contacted  
■ Successfully contacted within 5 working days of referral



# HSCMD vs. Statewide

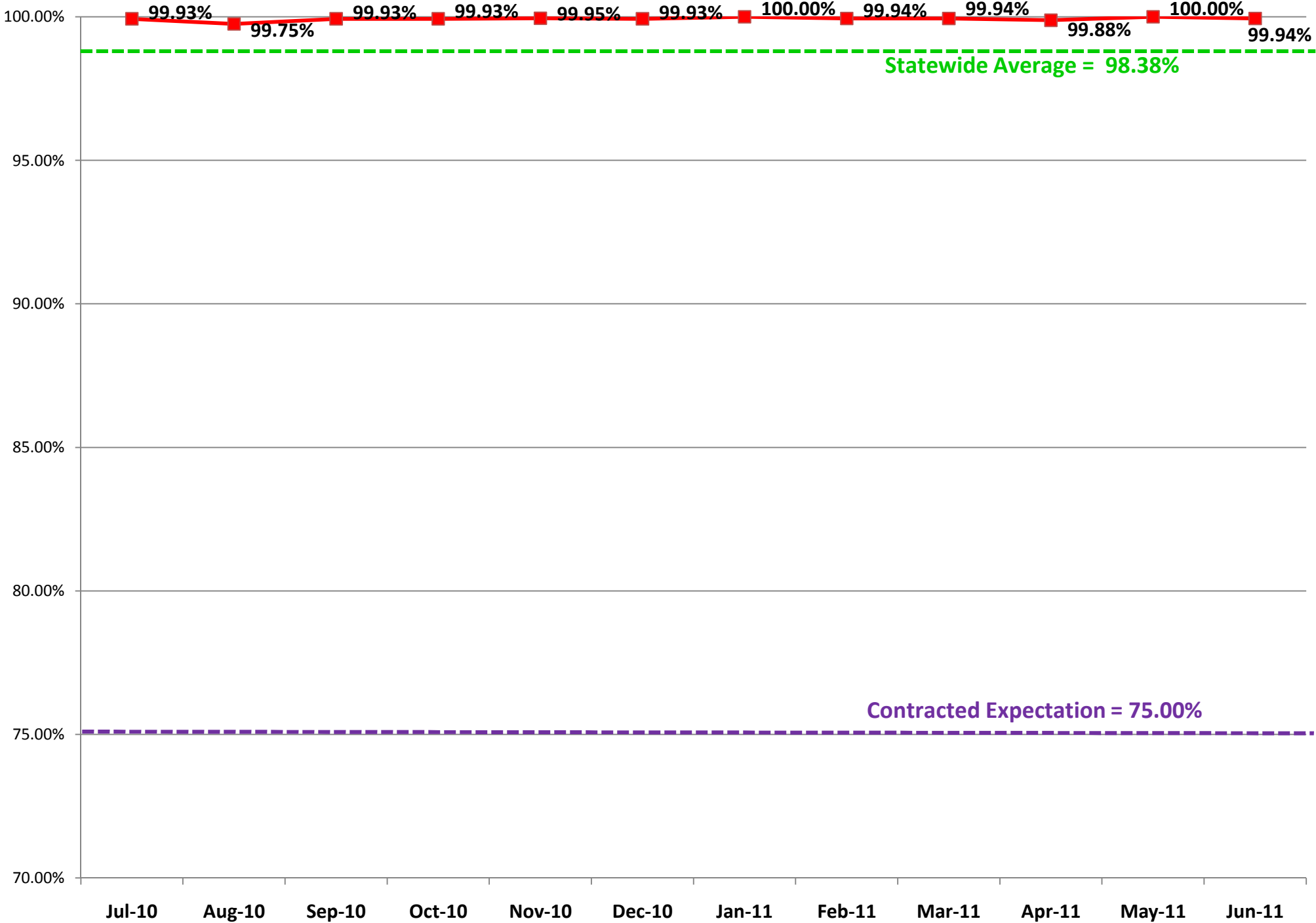
## % Successfully contacted and %Auto-assignments

### FYTD 2010 - 2011



# % Received an attempt to contact within 5 days of Referral

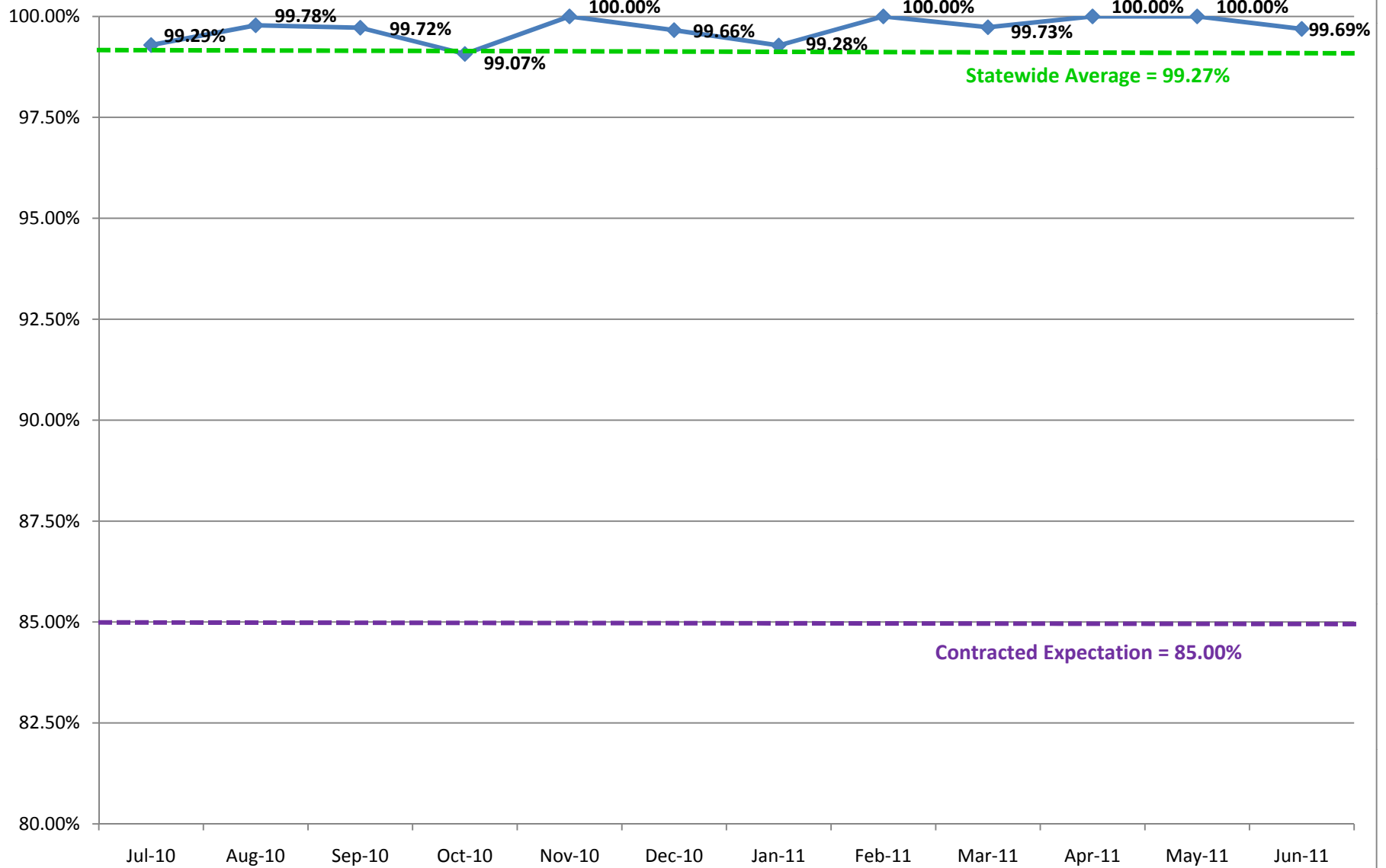
## FYTD 2010 - 2011



Statewide Average = 98.38%

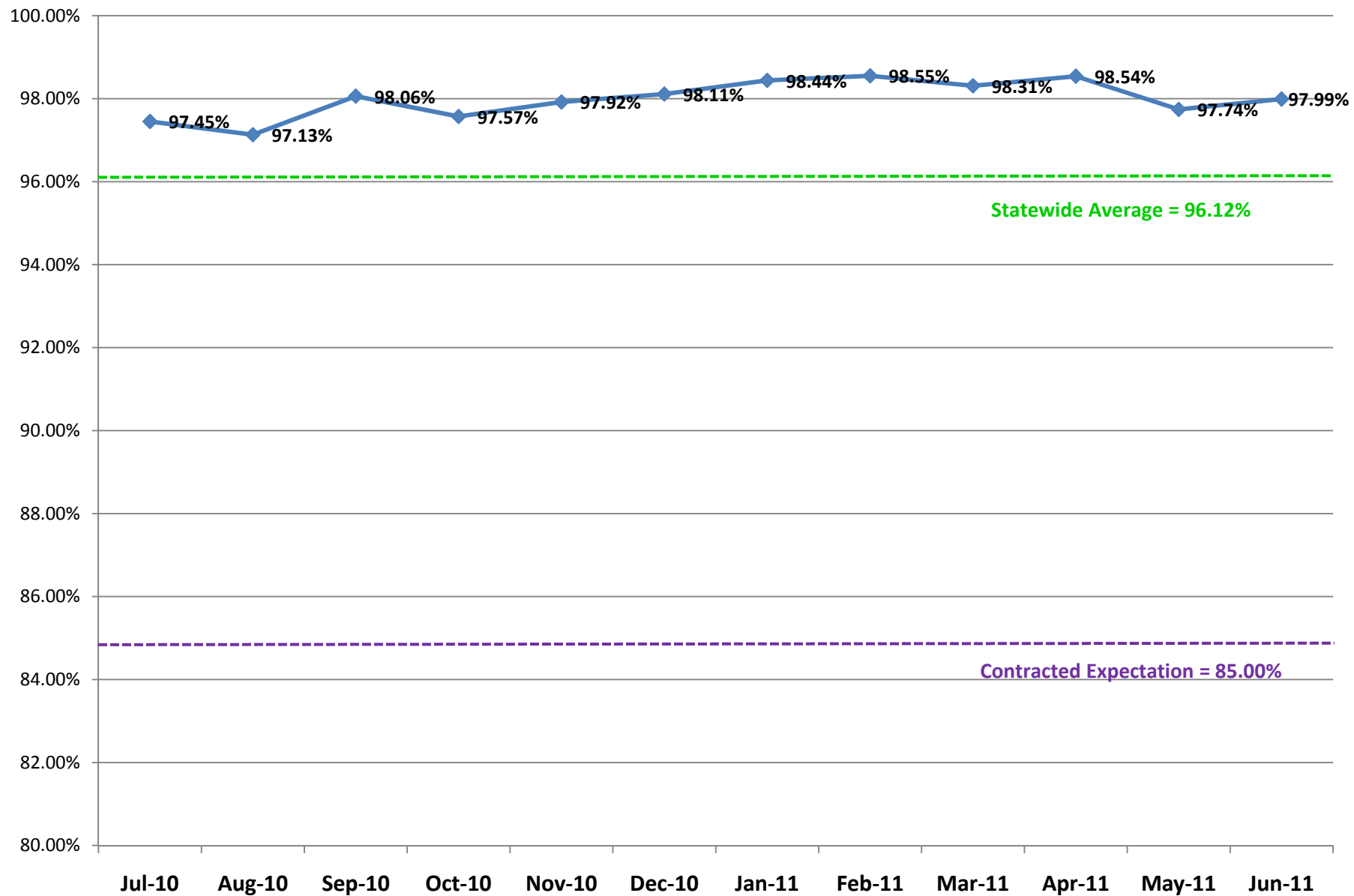
Contracted Expectation = 75.00%

## Received at Least Three (3) Attempts to Contact Before Being Auto Assigned

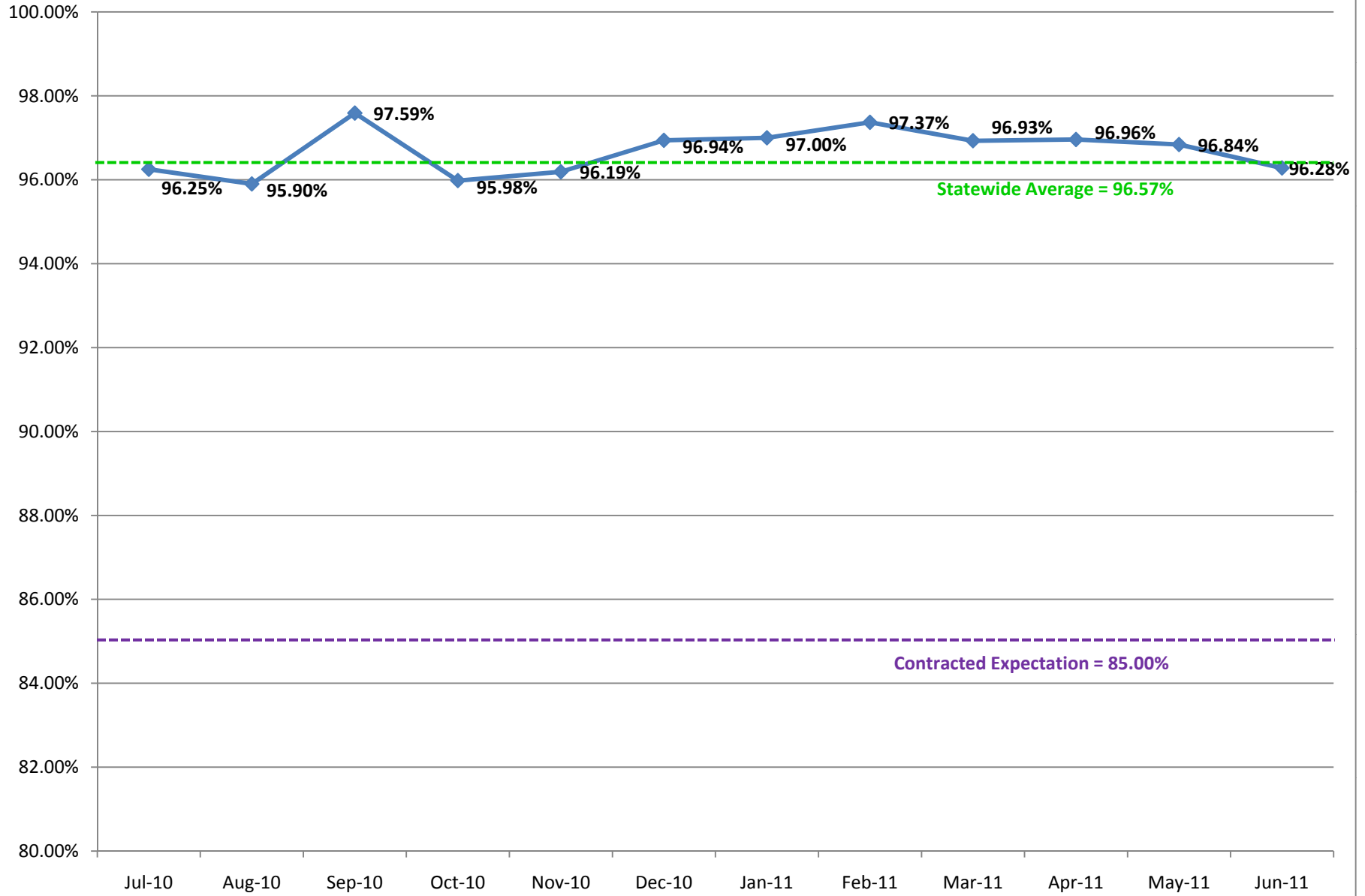




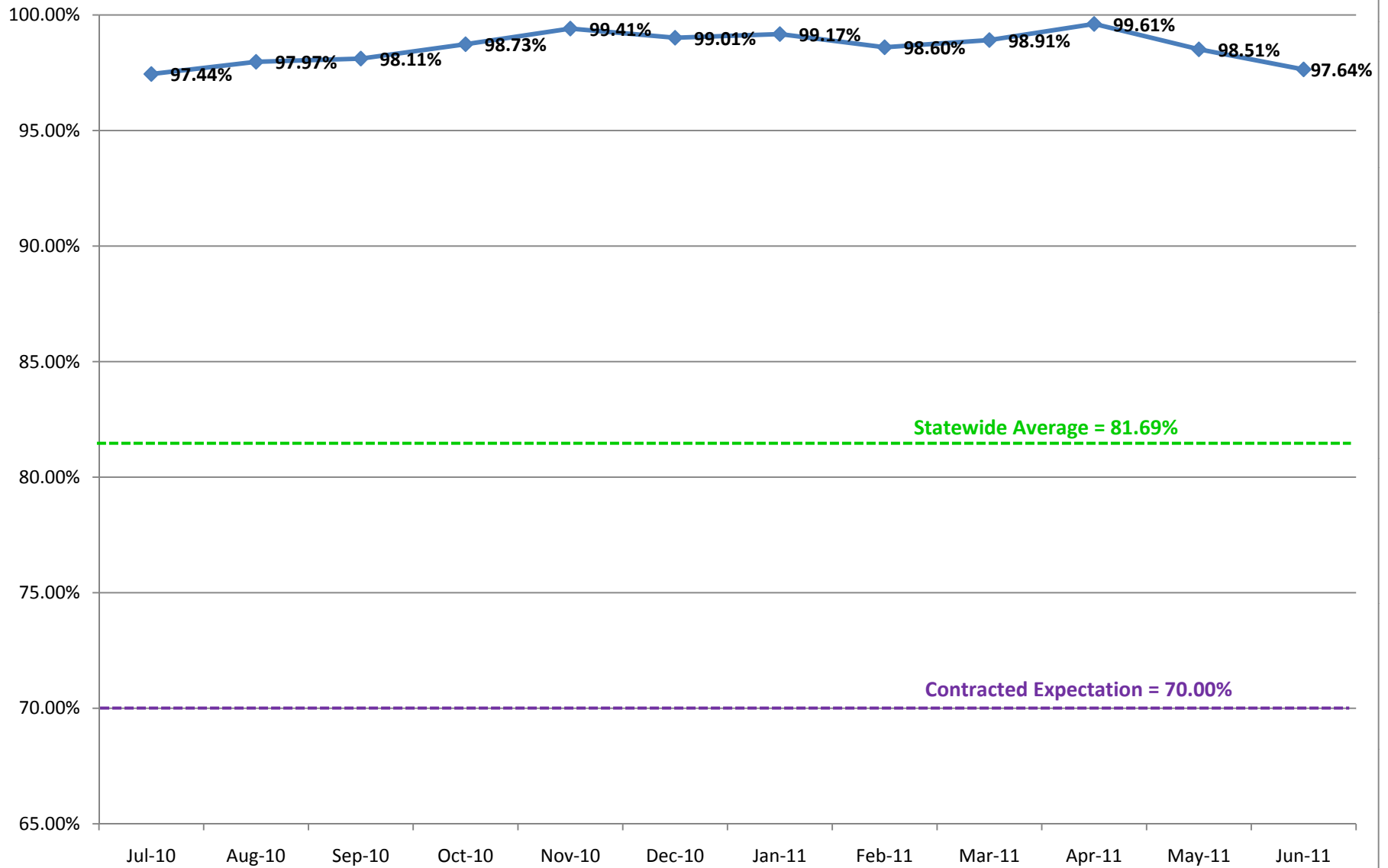
## Enrolled with a prenatal care provider within 30 days of referral



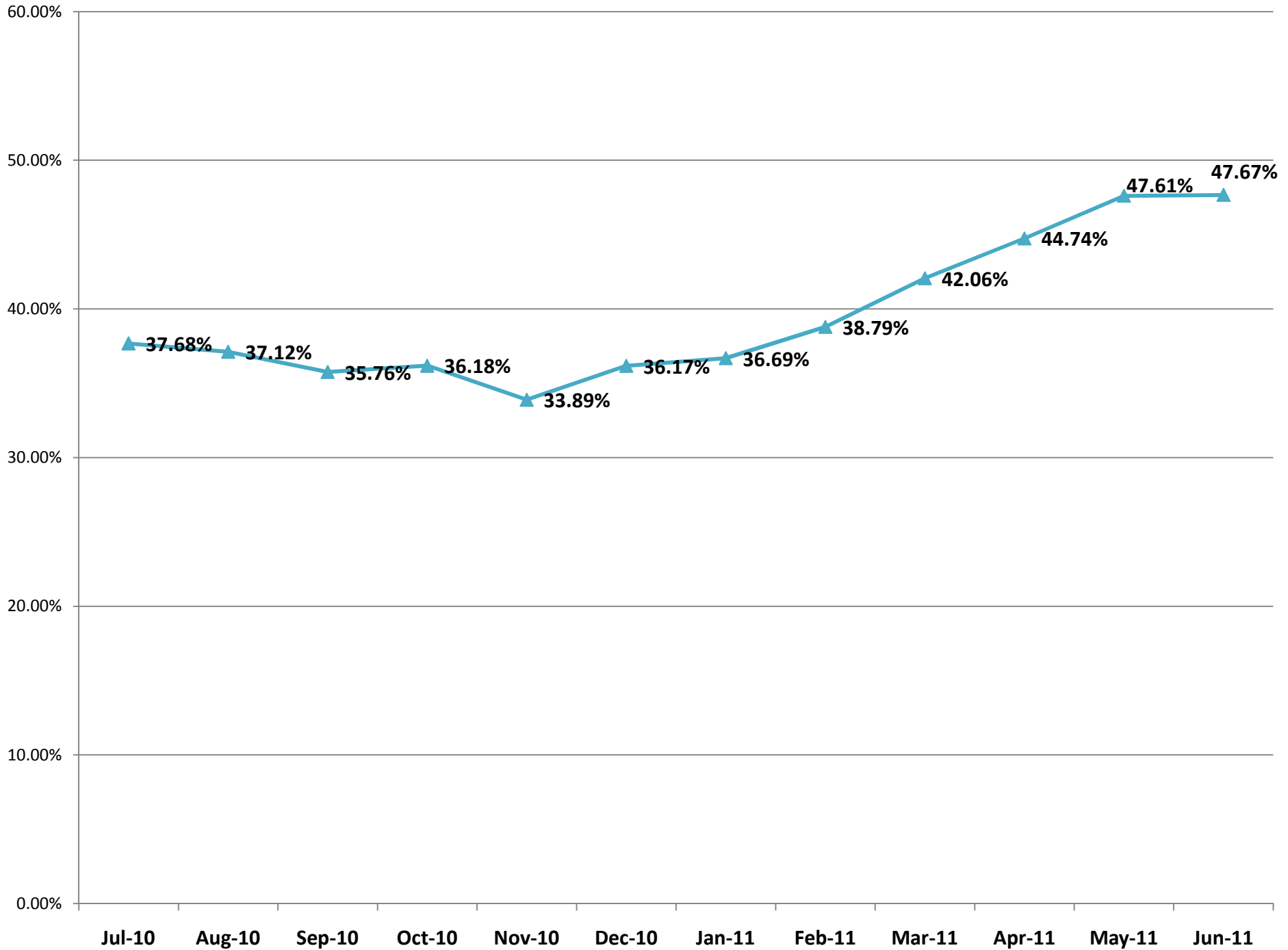
# Facilitated WIC



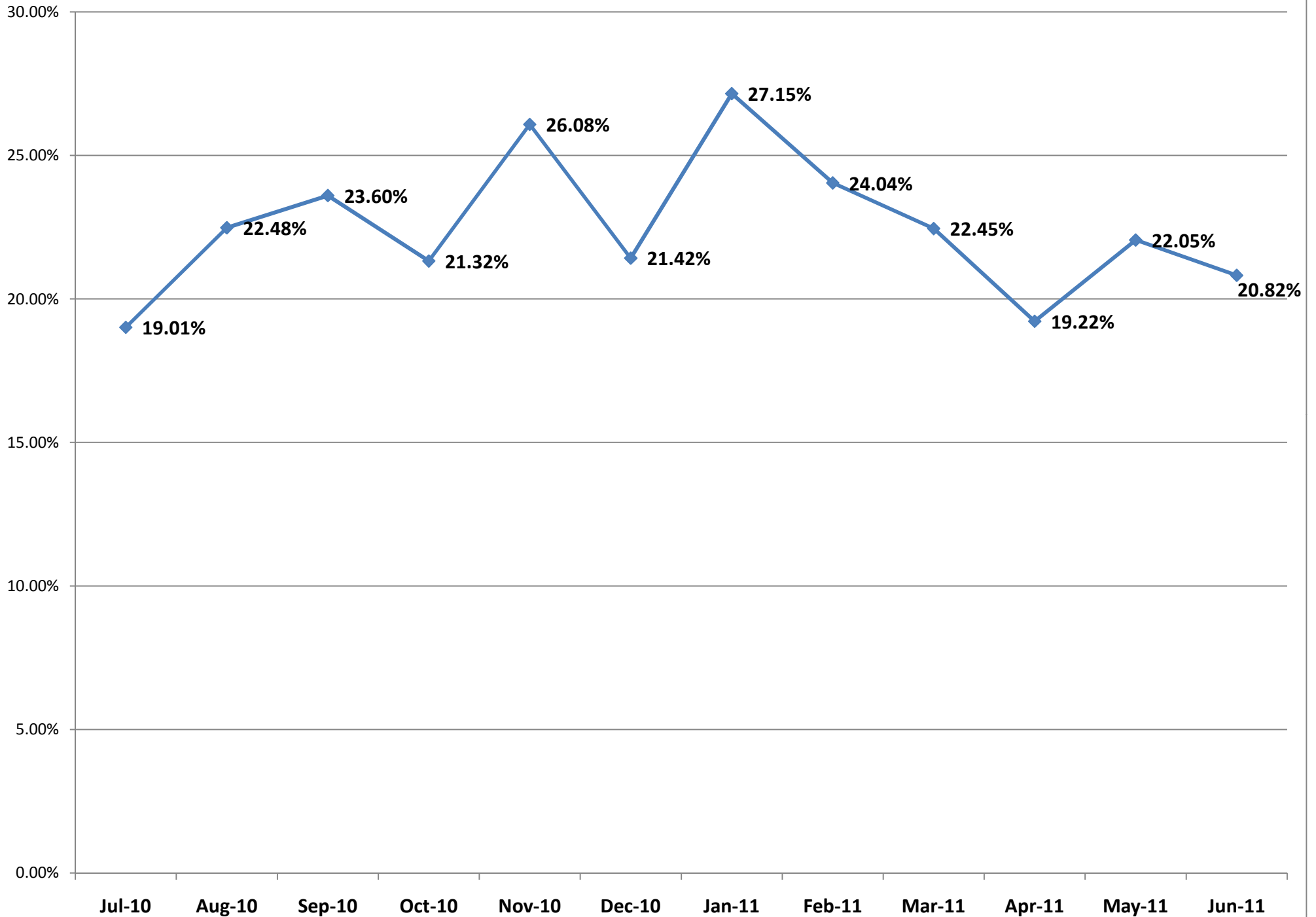
## Post Enrollment attempt to contact between day 31 and the end of 5th month



# % Successfully contacted within 5 working days of referral FYTD 2010 - 2011



# % Auto Assigned FYTD 2010 - 2011



## FYTD MomCare Stats by Month 2010 -2011

Item	Jul-10	Aug-10	Sep-10	Oct-10	Nov-10	Dec-10	Jan-11	Feb-11	Mar-11	Apr-11	May-11	Jun-11	Total	Average
Referred by Fiscal Agent	1489	1988	1496	1520	1971	1377	2055	1797	1657	1712	1991	1542	20595	1732.09
Received an attempt to contact	1488	1986	1496	1519	1971	1377	2055	1796	1657	1710	1991	1541	20587	1731.45
Received an attempt to contact within 5 working days	1488	1983	1495	1519	1970	1376	2055	1796	1656	1710	1991	1541	20580	1730.82
Successfully contacted	1092	1340	994	994	1232	981	1327	1255	1206	1251	1457	1130	14259	1193.55
Successfully contacted within 5 working days of referral	561	738	535	550	668	498	754	697	697	766	948	735	8147	673.82
Not successfully contacted	397	648	502	526	739	396	728	542	451	461	534	412	6336	538.55
Enrolled with a prenatal care provider	1452	1932	1471	1484	1933	1352	2027	1775	1634	1688	1968	1514	20230	1701.45
Enrolled with a prenatal care provider within 30 days of referral	1451	1931	1467	1483	1930	1351	2023	1771	1629	1687	1946	1511	20180	1697.18
Auto Assigned	283	447	353	324	514	295	558	432	372	329	439	321	4667	395.09
Received at least three (3) attempts to contact before being auto assigned	281	446	352	321	514	294	554	432	371	329	439	320	4653	393.91
Enrolled, not verbally contacted and received additional attempt to contact between day 31 and the end of month 5**	39	484	106	158	170	202	241	358	827	549	603		3737	339.73
Facilitated WIC	1051	1285	970	954	1185	951	1291	1222	1169	1213	1411	1088	13790	1154.73
Chose not to participate in Momcare refused consent	12	19	2	6	7	7	10	6	10	6	8	7	100	8.45
Referred to the Healthy Start program	4	3	3	2	10	8	5	4	6	6	4	1	56	5.00
Received follow-up from the MCA	1462	1959	1487	1505	1957	1366	2043	1790	1644	1699	1978	1535	20425	1717.27
Received follow-up from the HSCC	14	10	7	9	7	4	2	1	3	7	5	0	69	6.27
No Shows	2	0	0	1	4	1	1	2	1	0	0	0	12	1.09
Ineligible Cases - man/child	12	12	4	11	11	0	7	4	4	6	5	6	82	6.91
Ineligible cases - other	3	4	4	6	3	5	5	4	4	7	14	3	62	5.36