

**MCH Health Problem Analysis for
Miami-Dade
Calendar Year 2006**

Population

	Miami-Dade		Florida	
	Number	Percentage	Number	Percentage
Total	2,442,170		18,440,700	
White	1,853,466	75.89	14,909,913	80.85
Nonwhite	588,704	24.11	3,530,787	19.15
Black	534,545	21.89	3,023,821	16.40
Other	54,159	2.22	506,966	2.75

Data Source: Population Estimates from the Florida Legislature, Office of Economic & Demographic Research

Births

	Miami-Dade		Florida	
	Number	Percentage	Number	Percentage
Total	33,739		237,166	
White *	24,630	73.00	174,147	73.43
Black *	8,282	24.55	50,808	21.42
Other *	782	2.32	11,889	5.01
Hispanic **	21,572	63.94	70,094	29.55
Non-Hispanic **	12,109	35.89	166,057	70.02

*Regardless of ethnicity. Does not include persons whose race is unknown.

**Regardless of race. Does not include persons whose ethnicity is unknown.

Data Source: Florida Department of Health, Office of Vital Statistics

Infant Deaths - Actual vs Expected

Total Births	Actual Infant Deaths	Expected Infant Deaths	Significance
33,739	218	246.80	L
		Actual Infant Death Rate per 1,000 Births	Expected Infant Death Rate per 1,000 Births
		6.46	7.31

H=Actual Rate is Significantly Higher than the Expected Rate

L=Actual Rate is Significantly Lower than the Expected Rate

N=Actual Rate is Not Significantly Different than the Expected Rate

Data Source: Department of Health - Infant, Maternal and Reproductive Health using Florida Vital Statistics data

Low Birthweight - Actual vs Expected

Total Births	Actual LBW Births	Expected LBW Births	Significance
33,739	2,901	3,008.20	L
		Actual Percent LBW	Expected Percent LBW
		8.60	8.92

H=Actual Rate is Significantly Higher than the Expected Rate

L=Actual Rate is Significantly Lower than the Expected Rate

N=Actual Rate is Not Significantly Different than the Expected Rate

Data Source: Department of Health - Infant, Maternal and Reproductive Health using Florida Vital Statistics data

MCH Health Problem Analysis for Miami-Dade Calendar Year 2006

Deaths Due to Leading Causes of Infant Mortality

Perinatal Conditions	113	Unintentional Injury	7
Congenital Anomalies	50	Heart Disease	3
Sudden Infant Death Syndrome	2	Other Causes	43

Data Source: Florida Department of Health, Office of Vital Statistics

Infant Mortality

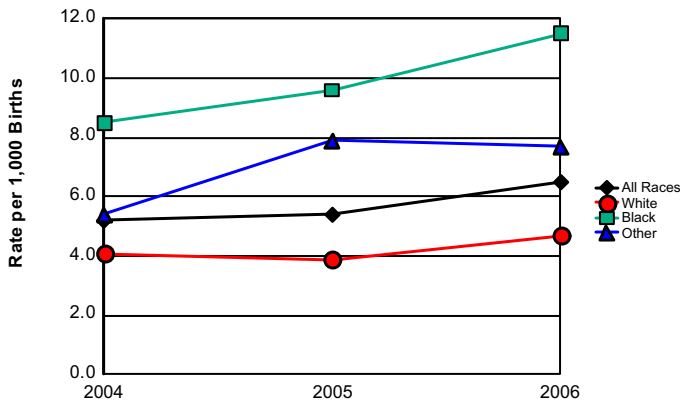
	2004		2005		2006		Comparison to Previous Year	Comparison to Florida Rate
	Miami-Dade	Florida	Miami-Dade	Florida	Miami-Dade	Florida		
Total	167	1,536	176	1,626	218	1,713	Increased	
Rate per 1000	5.2	7.0	5.4	7.2	6.5	7.2	Increased	Below
White *	94	876	92	882	116	974	Increased	
Rate per 1000	4.1	5.5	3.9	5.3	4.7	5.6	Increased	Below
Black *	68	621	78	652	95	653	Increased	
Rate per 1000	8.5	13.2	9.6	13.6	11.5	12.9	Increased	Below
Other *	5	38	6	91	6	84	Same	
Rate per 1000	5.4	3.6	7.9	7.8	7.7	7.1	Decreased	Above
Hispanic **	58	242	91	373	102	399	Increased	
Rate per 1000	2.9	4.1	4.5	5.9	4.7	5.7	Increased	Below
Non-Hispanic **	73	1,244	81	1,246	112	1,303	Increased	
Rate per 1000	6.1	7.8	6.9	7.7	9.2	7.8	Increased	Above

* Regardless of ethnicity. Does not include persons whose race is unknown.

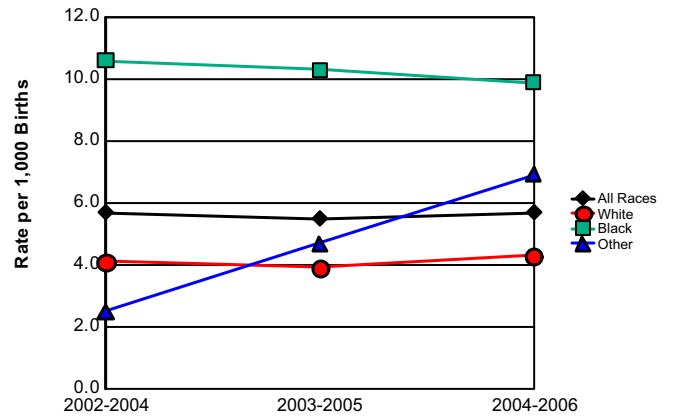
** Regardless of race. Does not include persons whose ethnicity is unknown.

Data Source: Florida Department of Health, Office of Vital Statistics

Infant Mortality Rates



**Infant Mortality Trend
Three-Year Rolling Averages**



	2004	2005	2006
All Races	5.2	5.4	6.5
White	4.1	3.9	4.7
Black	8.5	9.6	11.5
Other	5.4	7.9	7.7

	2002-2004	2003-2005	2004-2006
All Races	5.7	5.5	5.7
White	4.1	3.9	4.3
Black	10.6	10.3	9.9
Other	2.5	4.7	6.9

MCH Health Problem Analysis for Miami-Dade Calendar Year 2006

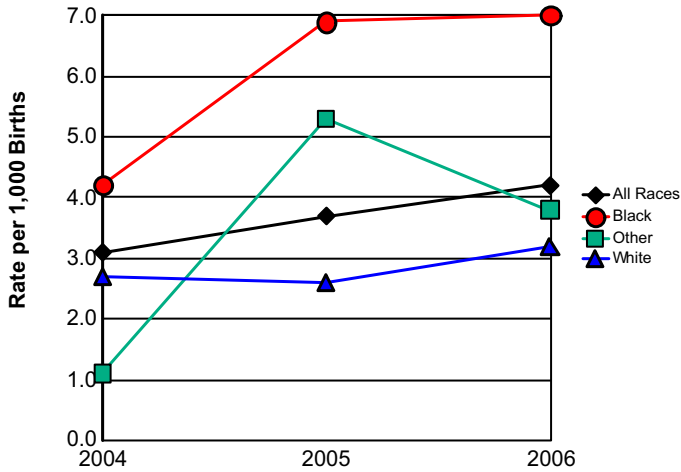
Neonatal Mortality

	2004		2005		2006		Comparison to Previous Year	Comparison to Florida Rate
	Miami-Dade	Florida	Miami-Dade	Florida	Miami-Dade	Florida		
Total	98	989	121	1,024	141	1,122	Increased	
Rate per 1000	3.1	4.5	3.7	4.5	4.2	4.7	Increased	Below
White *	63	563	61	544	79	630	Increased	
Rate per 1000	2.7	3.5	2.6	3.3	3.2	3.6	Increased	Below
Black *	34	401	56	422	58	436	Increased	
Rate per 1000	4.2	8.5	6.9	8.8	7.0	8.6	Increased	Below
Other *	1	24	4	57	3	54	Decreased	
Rate per 1000	1.1	2.3	5.3	4.9	3.8	4.5	Decreased	Below
Hispanic **	32	146	65	245	75	281	Increased	
Rate per 1000	1.6	2.5	3.2	3.8	3.5	4.0	Increased	Below
Non-Hispanic **	35	801	52	773	62	831	Increased	
Rate per 1000	2.9	5.0	4.4	4.8	5.1	5.0	Increased	Above

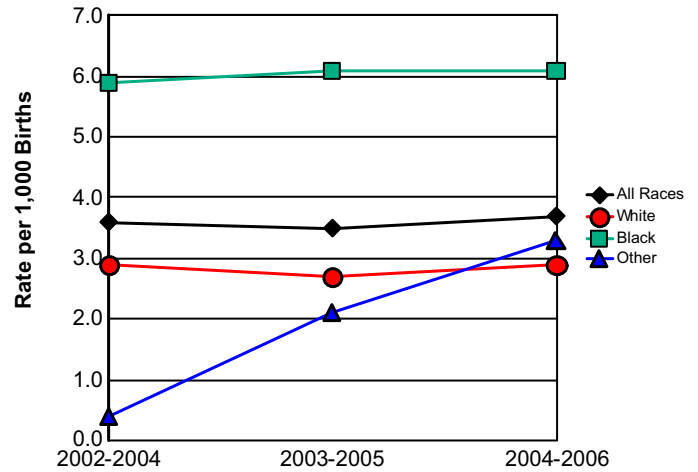
*Regardless of ethnicity. Does not include persons whose race is unknown.
**Regardless of race. Does not include persons whose ethnicity is

Data Source: Florida Department of Health, Office of Vital Statistics

Neonatal Mortality Rates



Neonatal Mortality Trend Three-Year Rolling Averages



	2004	2005	2006
All Races	3.1	3.7	4.2
White	2.7	2.6	3.2
Black	4.2	6.9	7.0
Other	1.1	5.3	3.8

	2002-2004	2003-2005	2004-2006
All Races	3.6	3.5	3.7
White	2.9	2.7	2.9
Black	5.9	6.1	6.1
Other	0.4	2.1	3.3

MCH Health Problem Analysis for Miami-Dade Calendar Year 2006

Postneonatal Mortality

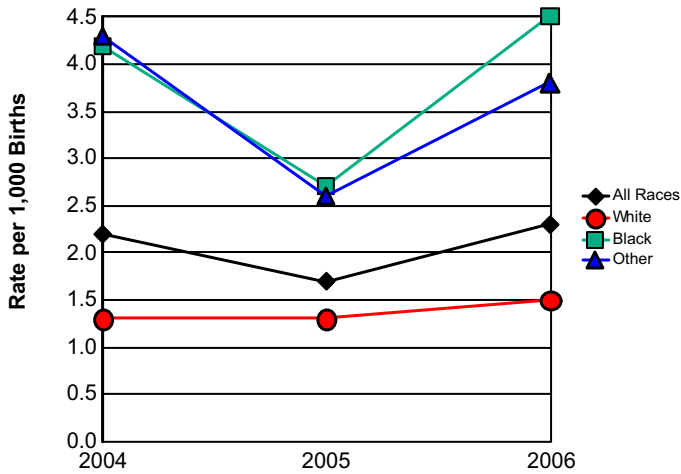
	2004		2005		2006		Comparison to Previous Year	Comparison to Florida Rate
	Miami-Dade	Florida	Miami-Dade	Florida	Miami-Dade	Florida		
Total	69	547	55	602	77	591	Increased	
Rate per 1000	2.2	2.5	1.7	2.7	2.3	2.5	Increased	Below
White *	31	313	31	338	37	344	Increased	
Rate per 1000	1.3	2.0	1.3	2.0	1.5	2.0	Increased	Below
Black *	34	220	22	230	37	217	Increased	
Rate per 1000	4.2	4.7	2.7	4.8	4.5	4.3	Increased	Above
Other *	4	14	2	34	3	30	Increased	
Rate per 1000	4.3	1.3	2.6	2.9	3.8	2.5	Increased	Above
Hispanic **	26	96	26	128	27	118	Increased	
Rate per 1000	1.3	1.6	1.3	2.0	1.3	1.7	Same	Below
Non-Hispanic **	38	443	29	473	50	472	Increased	
Rate per 1000	3.2	2.8	2.5	2.9	4.1	2.8	Increased	Above

*Regardless of ethnicity. Does not include persons whose race is unknown.

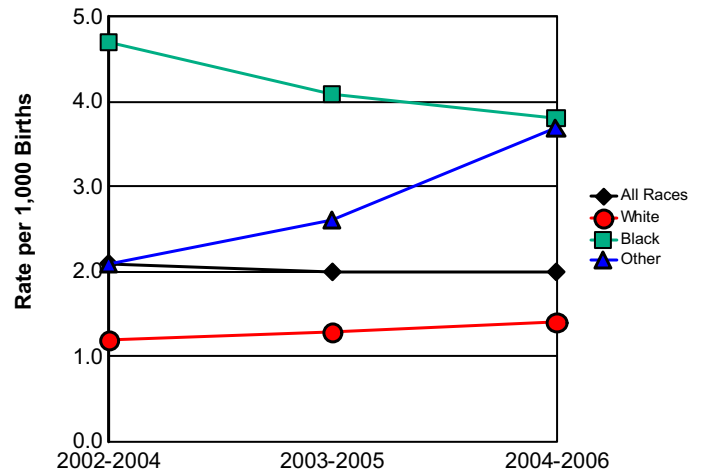
** Regardless of race. Does not include persons whose ethnicity is unknown.

Data Source: Florida Department of Health, Office of Vital Statistics

Postneonatal Mortality Rates



Postneonatal Mortality Trend Three-Year Rolling Averages



	2004	2005	2006
All Races	2.2	1.7	2.3
White	1.3	1.3	1.5
Black	4.2	2.7	4.5
Other	4.3	2.6	3.8

	2002-2004	2003-2005	2004-2006
All Races	2.1	2.0	2.0
White	1.2	1.3	1.4
Black	4.7	4.1	3.8
Other	2.1	2.6	3.7

MCH Health Problem Analysis for Miami-Dade Calendar Year 2006

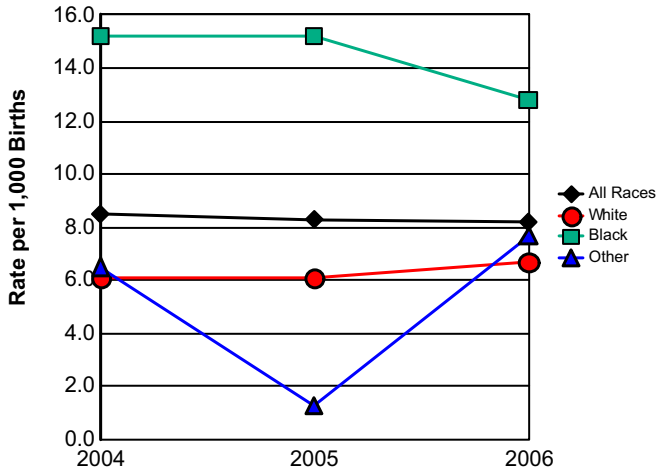
Fetal Mortality

	2004		2005		2006		Comparison to Previous Year	Comparison to Florida Rate
	Miami-Dade	Florida	Miami-Dade	Florida	Miami-Dade	Florida		
Total	272	1,701	270	1,650	278	1,756	Increased	
Rate per 1000	8.5	7.8	8.3	7.3	8.2	7.4	Decreased	Above
White *	141	966	143	938	166	1,020	Increased	
Rate per 1000	6.1	6.0	6.1	5.6	6.7	5.9	Increased	Above
Black *	122	680	123	649	106	650	Decreased	
Rate per 1000	15.2	14.5	15.2	13.5	12.8	12.8	Decreased	Same
Other *	6	43	1	39	6	83	Increased	
Rate per 1000	6.5	4.1	1.3	3.3	7.7	7.0	Increased	Above
Hispanic **	88	328	72	309	135	446	Increased	
Rate per 1000	4.4	5.6	3.5	4.8	6.3	6.4	Increased	Below
Non-Hispanic **	95	1,243	66	1,172	134	1,285	Increased	
Rate per 1000	8.0	7.8	5.6	7.3	11.1	7.7	Increased	Above

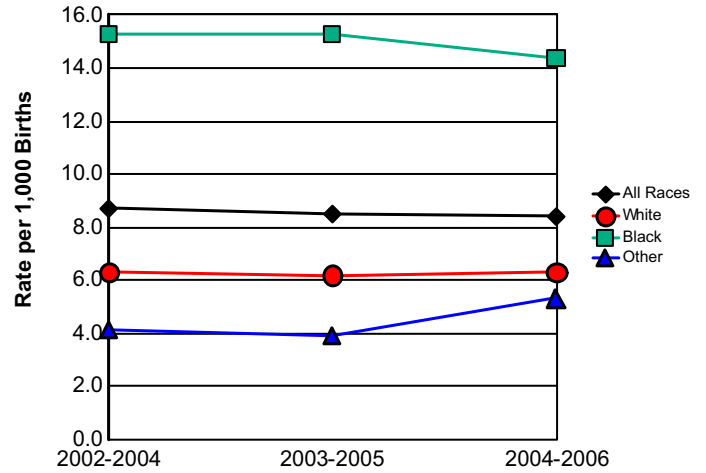
* Regardless of ethnicity. Does not include persons whose race is unknown.

Data Source: Florida Department of Health, Office of Vital Statistics

Fetal Mortality Rates



Fetal Mortality Trend Three-Year Rolling Averages



	2004	2005	2006
All Races	8.5	8.3	8.2
White	6.1	6.1	6.7
Black	15.2	15.2	12.8
Other	6.5	1.3	7.7

	2002-2004	2003-2005	2004-2006
All Races	8.7	8.5	8.4
White	6.3	6.2	6.3
Black	15.3	15.3	14.4
Other	4.1	3.9	5.3

MCH Health Problem Analysis for Miami-Dade Calendar Year 2006

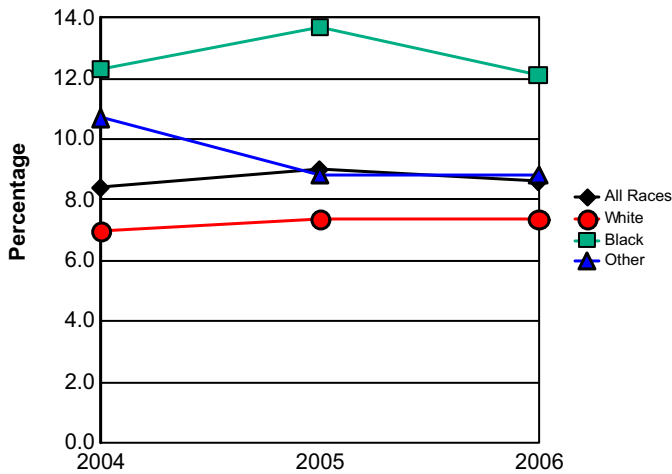
Low Birthweight

	2004		2005		2006		Comparison to Previous Year	Comparison to Florida Rate
	Miami-Dade	Florida	Miami-Dade	Florida	Miami-Dade	Florida		
Total	2,703	18,670	2,918	19,802	2,901	20,714	Decreased	
Percentage	8.4	8.6	9.0	8.8	8.6	8.7	Decreased	Below
White *	1,607	11,570	1,729	12,221	1,823	12,848	Increased	
Percentage	7.0	7.2	7.4	7.4	7.4	7.4	Same	Same
Black *	991	6,134	1,112	6,521	1,003	6,822	Decreased	
Percentage	12.3	13.1	13.7	13.6	12.1	13.4	Decreased	Below
Other *	99	923	67	1,025	69	1,023	Increased	
Percentage	10.7	8.8	8.8	8.8	8.8	8.6	Same	Above
Hispanic **	1,394	4,100	1,508	4,493	1,561	4,948	Increased	
Percentage	7.0	7.0	7.4	7.0	7.2	7.1	Decreased	Above
Non-Hispanic **	1,293	14,459	1,398	15,210	1,334	15,669	Decreased	
Percentage	10.9	9.1	11.8	9.4	11.0	9.4	Decreased	Above

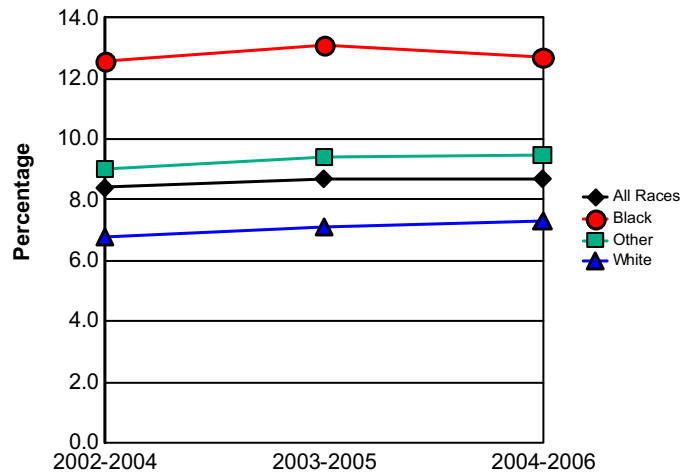
* Regardless of ethnicity. Does not include persons whose race is unknown.

Data Source: Florida Department of Health, Office of Vital Statistics

Percentage of Low Birthweight Births



Low Birthweight Births Trend Three-Year Rolling Averages



	2004	2005	2006
All Races	8.4	9.0	8.6
White	7.0	7.4	7.4
Black	12.3	13.7	12.1
Other	10.7	8.8	8.8

	2002-2004	2003-2005	2004-2006
All Races	8.4	8.7	8.7
White	6.8	7.1	7.3
Black	12.6	13.1	12.7
Other	9.0	9.4	9.5

MCH Health Problem Analysis for Miami-Dade Calendar Year 2006

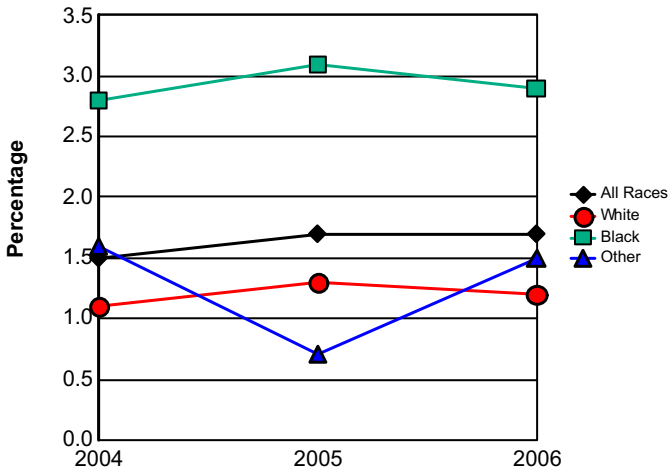
Very Low Birthweight

	2004		2005		2006		Comparison to Previous Year	Comparison to Florida Rate
	Miami-Dade	Florida	Miami-Dade	Florida	Miami-Dade	Florida		
Total	491	3,491	566	3,637	557	3,807	Decreased	
Percentage	1.5	1.6	1.7	1.6	1.7	1.6	Same	Above
White *	247	1,862	304	1,960	300	2,075	Decreased	
Percentage	1.1	1.2	1.3	1.2	1.2	1.2	Decreased	Same
Black *	224	1,470	255	1,507	244	1,578	Decreased	
Percentage	2.8	3.1	3.1	3.1	2.9	3.1	Decreased	Below
Other *	15	139	5	162	12	147	Increased	
Percentage	1.6	1.3	0.7	1.4	1.5	1.2	Increased	Above
Hispanic **	211	674	275	779	267	816	Decreased	
Percentage	1.1	1.2	1.3	1.2	1.2	1.2	Decreased	Same
Non-Hispanic **	272	2,775	284	2,826	287	2,965	Increased	
Percentage	2.3	1.7	2.4	1.7	2.4	1.8	Same	Above

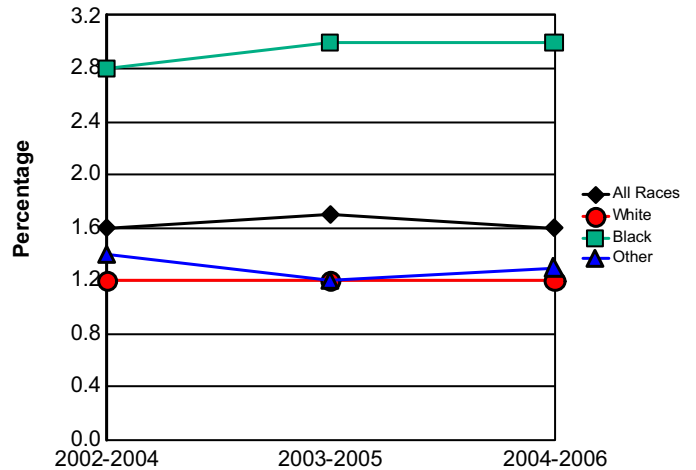
*Regardless of ethnicity. Does not include persons whose race is unknown

Data Source: Florida Department of Health, Office of Vital Statistics

Percentage of Very Low Birthweight Births



Very Low Birthweight Trend Three-Year Rolling Averages



	2004	2005	2006
All Races	1.5	1.7	1.7
White	1.1	1.3	1.2
Black	2.8	3.1	2.9
Other	1.6	0.7	1.5

	2002-2004	2003-2005	2004-2006
All Races	1.6	1.7	1.6
White	1.2	1.2	1.2
Black	2.8	3.0	3.0
Other	1.4	1.2	1.3

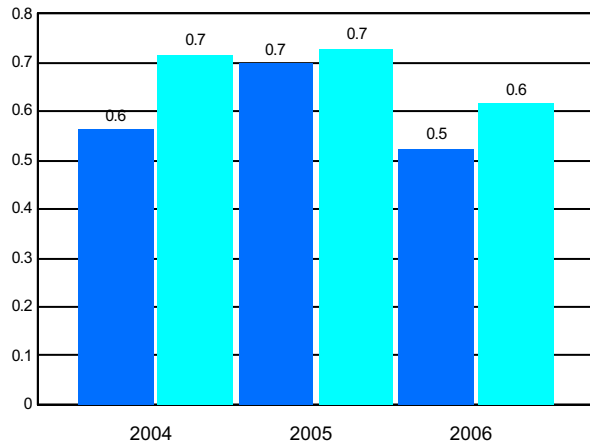
MCH Health Problem Analysis for Miami-Dade Calendar Year 2006

Births to Teens

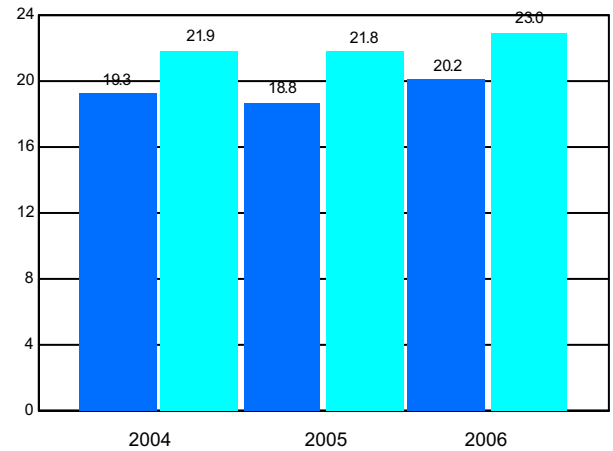
	2004		2005		2006		Comparison to Previous
	Miami-Dade	Florida	Miami-Dade	Florida	Miami-Dade	Florida	
Mothers 10-14							
Number	47	404	57	415	42	353	
Rate per 1,000	0.6	0.7	0.7	0.7	0.5	0.6	Decreased
Mothers 15-17							
Number	992	7,436	965	7,590	1,030	8,135	
Rate per 1,000	19.3	21.9	18.8	21.8	20.2	23.0	Increased
Percentage of Repeat Births 15-19	11.5	15.4	12.9	16.1	13.8	16.5	Increased

Data Source: Florida Department of Health, Office of Vital Statistics

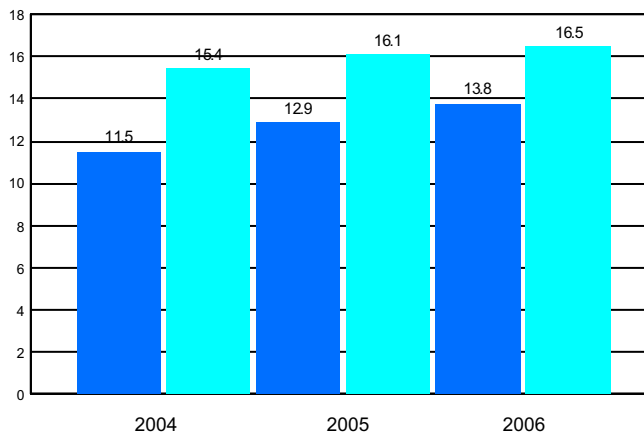
Births to Teens 10-14



Births to Teens 15-17



Repeat Births to Teens 15-19

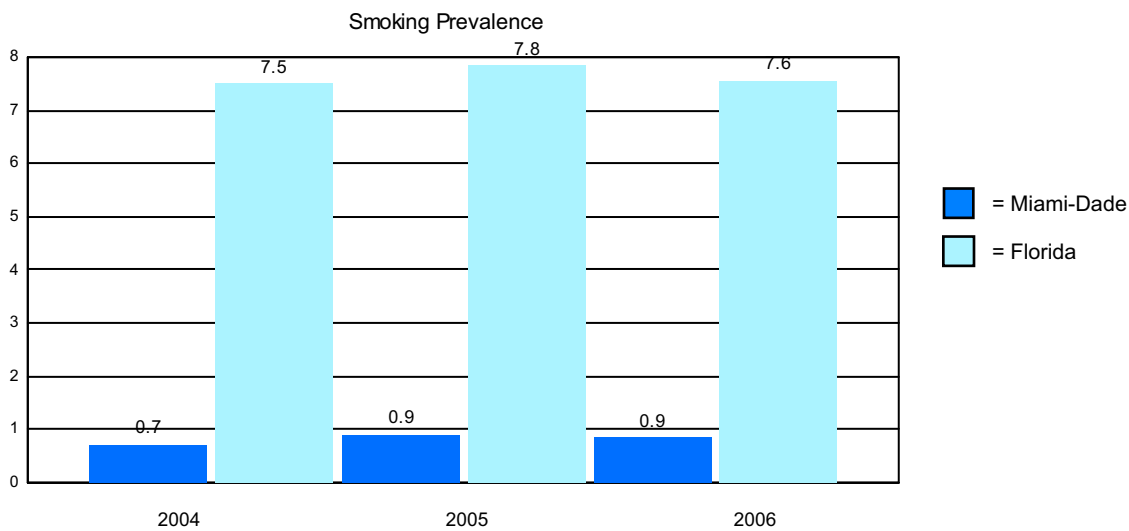


■ = Miami-Dade
■ = Florida

MCH Health Problem Analysis for Miami-Dade Calendar Year 2006

Reported Smoking Prevalence in Pregnancy

	Mothers Who Smoked	Percentage of Births
2004		
Miami-Dade	231	0.72
Florida	16,341	7.49
2005		
Miami-Dade	292	0.90
Florida	17,719	7.83
2006		
Miami-Dade	288	0.85
Florida	17,930	7.56



Data Source: Florida Department of Health, Office of Vital Statistics

Pediatric AIDS Cases Among Persons 0 - 4 Years of Age

	2004	2005	2006
Miami-Dade	4	5	2
Florida	15	16	17

Data Source: Florida Department of Health, Bureau of HIV/AIDS

CHD Prenatal Care Clients Offered HIV Testing

2004		2005		2006	
Miami-Dade	Florida	Miami-Dade	Florida	Miami-Dade	Florida
93.44%	86.34%	89.94%	83.60%	91.94%	82.75%

MCH Health Problem Analysis for Miami-Dade Calendar Year 2006

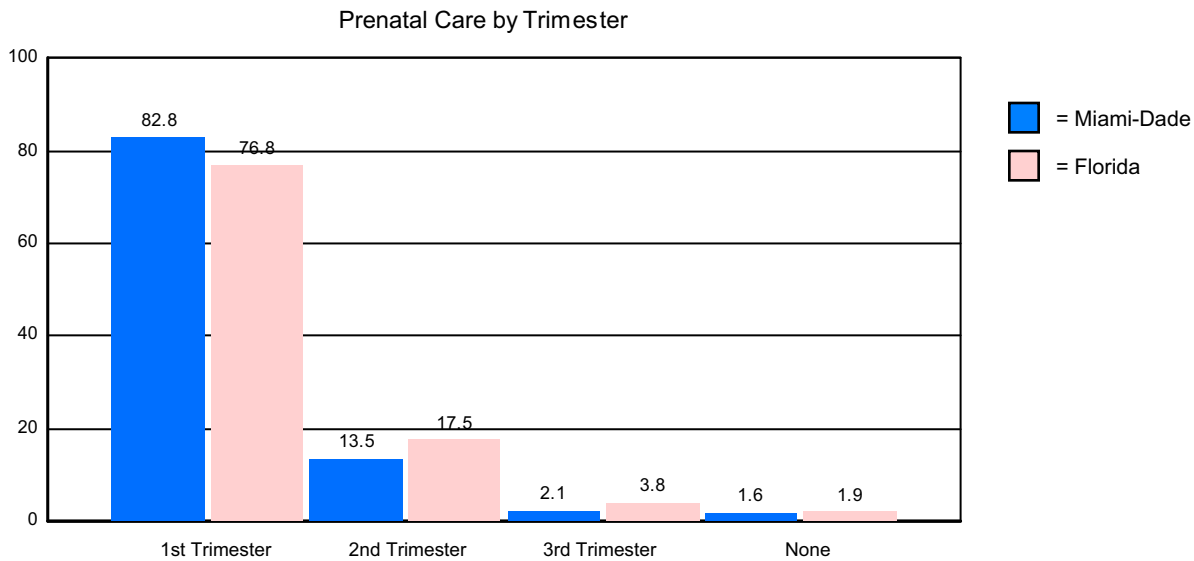
WIC Services

	Persons Eligible for WIC	Percentage Served by WIC
2004		
Miami-Dade	94,225	65.55
Florida	538,421	64.27
2005		
Miami-Dade	96,114	68.99
Florida	556,140	67.27
2006		
Miami-Dade	97,560	64.69
Florida	571,271	64.22

Data Source: Florida Department of Health, WIC & Nutrition Services

Prenatal Care by Trimester of Pregnancy

	1st Trimester	2nd Trimester	3rd Trimester	No Prenatal Care
Miami-Dade	82.77%	13.53%	2.07%	1.62%
Florida	76.77%	17.54%	3.78%	1.91%



Data Source: Florida Department of Health, Office of Vital Statistics

Immunizations Among 2-Year-Old CHD Clients

	Number Immunized		Percentage Immunized	
	Miami-Dade	Florida	Miami-Dade	Florida
2004	696	18,481	63.22	80.17
2005	579	16,750	70.44	86.02
2006	0	0	0.00	0.00

Data Source: Florida Department of Health, Bureau of Immunizations

**MCH Health Problem Analysis for
Miami-Dade
Calendar Year 2006**

Healthy Start Prenatal Screening and Services

	2004		2005		2006	
	Miami-Dade	Florida	Miami-Dade	Florida	Miami-Dade	Florida
Offered Rate %	66.22	87.41	77.13	91.17	75.08	88.03
Screening Rate %	47.16	59.73	59.05	67.36	54.94	66.38
Consent Rate %	71.21	68.33	76.56	73.89	73.17	75.40

	Number		Percentage	
	Miami-Dade	Florida	Miami-Dade	Florida
Estimated Number of Pregnant Women	33,684	235,894		
Offered Screen	25,289	207,658	75.08	88.03
Consenting to Screen	18,505	156,579	73.17	75.40
Positive Screen + Referred	13,234	95,640	71.52	61.08
Consenting to HS Participation	12,462	89,739	94.17	93.83
Received Initial Contact	7,840	61,041	62.91	68.02
Need Initial Assessment	4,261	35,860	54.35	58.75
Received Initial Assessment	3,654	36,239	85.75	101.06
Need Ongoing Care Coordination	5,018	38,759	64.01	63.50

	Miami-Dade			Florida	
	Clients	Percentage of Clients	Encounters per Client	Services per Encounter	Percentage of Clients
Total Receiving HS Prenatal Service	16,686		4.31	3.46	
Total IC/IA Only	2,267	13.59	3.02	2.84	17.75
Total IC/IA/Other HS Service	566	3.39	3.07	5.93	5.68
Track or Not Face-to-Face	4,020	24.09	4.56	3.14	18.46
Face-to-Face, without FSP	2,687	16.10	6.38	4.67	14.89
Face-to-Face, with FSP	1,446	8.67	9.93	3.49	6.41
Unable to Locate	3,152	18.89	2.45	2.48	12.24
Unable to Complete Initial Contact	518	3.10	3.00	2.03	14.20
Unable to Complete Initial Assessment	4	0.02	2.00	2.38	0.15

	Miami-Dade		
	Clients	Services	Services/Client
Nutritional Assessment and Counseling	1,113	6,972	6.26
Psychosocial Counseling	1,089	7,856	7.21
Parenting Education	3,630	22,096	6.09
Childbirth Education	1,155	15,645	13.55
Breastfeeding Education	2,998	8,971	2.99
Smoking Cessation Counseling	1,515	2,827	1.87
Interconceptional Education & Counseling	345	1,053	3.05

Pregnant Drug-Abusing Women

	Clients	Encounters/Client	Services/Encounter
Miami-Dade	143	12.23	3.21
Florida	2,783	9.14	4.22

**MCH Health Problem Analysis for
Miami-Dade
Calendar Year 2006**

Healthy Start Infant Screening and Services

	2004		2005		2006	
	Miami-Dade	Florida	Miami-Dade	Florida	Miami-Dade	Florida
Screening Rate %	74.98	69.62	75.59	72.94	85.14	80.26

	Number		Percentage	
	Miami-Dade	Florida	Miami-Dade	Florida
Total Number of Births	33,684	235,894		
Consenting to Screen	28,679	189,321	85.14	80.26
Positive Screen + Referred	3,660	26,258	12.76	13.87
Consenting to HS Participation	3,555	22,795	97.13	86.81
Received Initial Contact	2,201	37,266	61.91	163.48
Need Initial Assessment	758	17,928	34.44	48.11
Received Initial Assessment	650	25,832	85.75	144.09
Need Ongoing Care Coordination	1,181	23,610	53.66	63.36

	Miami-Dade			Florida
	Clients	Percentage of Clients	Encounters per Client	Percentage of Clients
Total Receiving HS Infant Service	5,327		6.65	
Total IC/IA Only	885	16.61	2.82	23.58
Total IC/IA/Other HS Service	357	6.70	4.48	3.80
Track or Not Face-to-Face	747	14.02	4.36	12.92
Face-to-Face, without FSP	720	13.52	16.16	11.73
Face-to-Face, with FSP	362	6.80	26.59	5.93
Unable to Locate	799	15.00	4.34	7.89
Unable to Complete Initial Contact	200	3.75	3.11	24.04
Unable to Complete Initial Assessment	1	0.02	1.00	0.21

	Miami-Dade		
	Clients	Services	Services/Client
Nutritional Assessment and Counseling	174	1,231	7.07
Psychosocial Counseling	438	3,755	8.57
Parenting Education	1,247	20,544	16.47
Childbirth Education	1	2	2.00
Breastfeeding Education	523	3,205	6.13
Smoking Cessation Counseling	506	1,647	3.25
Interconceptional Education & Counseling	175	886	5.06

Substance-exposed Newborns

	Clients	Encounters/Client	Services/Encounter
Miami-Dade	255	25.23	3.24
Florida	2,550	13.22	4.16

Attachment II-A.

Births by Zip-code, North Miami-Dade County, 2003

Zip Code	All Births	Births to Unwed Mothers		Births to Mothers Age 10-19		Low Birth Weight Births (<2,500 grams)		Gestation < 37 Weeks		Prenatal Care Started in First Trimester	
		Number	Percent	Number	Percent	Number	Percent	Number	Percent	Number	Percent
33010	532	254	47.7%	62	11.7%	36	6.8%	33	6.2%	486	91.4%
33012	823	331	40.2%	80	9.7%	49	6.0%	63	7.7%	762	92.6%
33013	338	134	39.6%	35	10.4%	18	5.3%	20	5.9%	315	93.2%
33014	539	197	36.5%	39	7.2%	40	7.4%	57	10.6%	497	92.2%
33015	959	329	34.3%	57	5.9%	53	5.5%	76	7.9%	887	92.5%
33016	625	246	39.4%	58	9.3%	54	8.6%	46	7.4%	585	93.6%
33018	516	140	27.1%	32	6.2%	33	6.4%	41	7.9%	487	94.4%
33054	493	359	72.8%	108	21.9%	78	15.8%	78	15.8%	389	78.9%
33055	686	376	54.8%	82	12.0%	69	10.1%	70	10.2%	593	86.4%
33056	547	392	71.7%	88	16.1%	73	13.3%	90	16.5%	461	84.3%
33127	518	374	72.2%	91	17.6%	65	12.5%	69	13.3%	425	82.0%
33137	236	125	53.0%	18	7.6%	33	14.0%	31	13.1%	201	85.2%
33138	396	184	46.5%	38	9.6%	49	12.4%	55	13.9%	349	88.1%
33139	354	117	33.1%	10	2.8%	23	6.5%	26	7.3%	333	94.1%
33140	268	37	13.8%	4	1.5%	25	9.3%	26	9.7%	256	95.5%
33141	493	199	40.4%	18	3.7%	33	6.7%	44	8.9%	451	91.5%
33142	841	634	75.4%	157	18.7%	86	10.2%	104	12.4%	702	83.5%
33147	824	628	76.2%	181	22.0%	95	11.5%	93	11.3%	671	81.4%
33150	513	345	67.3%	79	15.4%	50	9.7%	59	11.5%	403	78.6%
33154	178	28	15.7%	4	2.2%	5	2.8%	15	8.4%	169	94.9%
33160	400	83	20.8%	7	1.8%	35	8.8%	42	10.5%	365	91.3%
33161	910	456	50.1%	79	8.7%	101	11.1%	112	12.3%	768	84.4%
33162	748	392	52.4%	81	10.8%	81	10.8%	109	14.6%	633	84.6%
33167	297	187	63.0%	51	17.2%	40	13.5%	42	14.1%	246	82.8%
33168	398	208	52.3%	41	10.3%	50	12.6%	49	12.3%	335	84.2%
33169	620	379	61.1%	61	9.8%	82	13.2%	92	14.8%	504	81.3%
33179	506	185	36.6%	28	5.5%	26	5.1%	39	7.7%	448	88.5%
33180	284	41	14.4%	3	1.1%	16	5.6%	17	6.0%	272	95.8%
33181	299	109	36.5%	16	5.4%	21	7.0%	30	10.0%	261	87.3%
North Miami-Dade	15,141	7,469	49.3%	1,608	10.6%	1,419	9.4%	1,628	10.8%	13,254	87.5%
Miami-Dade	32,277	10,733	33.3%	2,985	9.2%	2,766	8.6%	3,248	10.1%	28,729	89.0%

Source: Florida Department of Health, Office of Vital Statistics. These data correspond to those published in the Florida Vital Statistics Annual Report for 2003.

Attachment II-A (Continued).

Births by Zip-code, Central Miami-Dade County, 2003

Zip Code	All Births	Births to Unwed Mothers		Births to Mothers Age 10-19		Low Birth Weight Births (<2,500 grams)		Gestation < 37 Weeks		Prenatal Care Started in First Trimester	
		Number	Percent	Number	Percent	Number	Percent	Number	Percent	Number	Percent
33109	5	1	20.0%	0	0.0%	2	40.0%	2	40.0%	5	100.0%
33122	5	2	40.0%	0	0.0%	0	0.0%	1	20.0%	5	100.0%
33125	655	378	57.7%	83	12.7%	44	6.7%	60	9.2%	560	85.5%
33126	561	231	41.2%	37	6.6%	34	6.1%	46	8.2%	505	90.0%
33128	113	79	69.9%	18	15.9%	9	8.0%	13	11.5%	92	81.4%
33129	150	23	15.3%	4	2.7%	18	12.0%	11	7.3%	144	96.0%
33130	278	168	60.4%	33	11.9%	13	4.7%	31	11.2%	239	86.0%
33131	107	9	8.4%	1	0.9%	12	11.2%	12	11.2%	103	96.3%
33132	34	12	35.3%	3	8.8%	3	8.8%	4	11.8%	33	97.1%
33133	368	119	32.3%	19	5.2%	23	6.3%	37	10.1%	334	90.8%
33134	378	70	18.5%	11	2.9%	42	11.1%	47	12.4%	365	96.6%
33135	422	248	58.8%	49	11.6%	26	6.2%	39	9.2%	357	84.6%
33136	261	193	73.9%	53	20.3%	44	16.9%	54	20.7%	207	79.3%
33143	366	92	25.1%	17	4.6%	28	7.7%	44	12.0%	340	92.9%
33144	270	118	43.7%	18	6.7%	21	7.8%	27	10.0%	252	93.3%
33145	268	93	34.7%	10	3.7%	17	6.3%	21	7.8%	253	94.4%
33146	124	8	6.5%	0	0.0%	4	3.2%	7	5.6%	120	96.8%
33149	198	8	4.0%	2	1.0%	12	6.1%	15	7.6%	193	97.5%
33155	455	120	26.4%	22	4.8%	27	5.9%	34	7.5%	425	93.4%
33165	523	167	31.9%	27	5.2%	24	4.6%	31	5.9%	488	93.3%
33166	296	75	25.3%	15	5.1%	27	9.1%	23	7.8%	276	93.2%
33172	516	164	31.8%	32	6.2%	38	7.4%	39	7.6%	482	93.4%
33173	369	92	24.9%	17	4.6%	40	10.8%	45	12.2%	356	96.5%
33174	350	131	37.4%	29	8.3%	27	7.7%	33	9.4%	318	90.9%
33175	539	156	28.9%	32	5.9%	35	6.5%	53	9.8%	509	94.4%
33178	592	62	10.5%	7	1.2%	51	8.6%	63	10.6%	573	96.8%
33182	160	31	19.4%	4	2.5%	15	9.4%	16	10.0%	157	98.1%
33183	470	123	26.2%	22	4.7%	44	9.4%	51	10.9%	440	93.6%
33184	212	66	31.1%	10	4.7%	14	6.6%	26	12.3%	197	92.9%
33185	249	38	15.3%	8	3.2%	17	6.8%	19	7.6%	238	95.6%
33193	636	184	28.9%	37	5.8%	48	7.5%	67	10.5%	596	93.7%
33194	14	3	21.4%	1	7.1%	0	0.0%	1	7.1%	12	85.7%
Central Miami-Dade	9,944	3,264	32.8%	621	6.2%	759	7.6%	972	9.8%	9,174	92.3%
Miami-Dade	32,277	10,733	33.3%	2,985	9.2%	2,766	8.6%	3,248	10.1%	28,729	89.0%

Source: Florida Department of Health, Office of Vital Statistics. These data correspond to those published in the Florida Vital Statistics Annual Report for 2003.

Attachment II-A (Continued).

Births by Zip-code, South Miami-Dade County, 2003

Zip Code	All Births	Births to Unwed Mothers		Births to Mothers Age 10-19		Low Birth Weight Births (<2,500 grams)		Gestation < 37 Weeks		Prenatal Care Started in First Trimester	
		Number	Percent	Number	Percent	Number	Percent	Number	Percent	Number	Percent
33030	788	521	66.1%	152	19.3%	61	7.7%	61	7.7%	582	73.9%
33031	55	13	23.6%	0	0.0%	6	10.9%	8	14.5%	51	92.7%
33032	432	249	57.6%	74	17.1%	40	9.3%	40	9.3%	353	81.7%
33033	555	326	58.7%	97	17.5%	41	7.4%	57	10.3%	453	81.6%
33034	351	230	65.5%	71	20.2%	38	10.8%	34	9.7%	267	76.1%
33035	52	15	28.8%	6	11.5%	4	7.7%	3	5.8%	46	88.5%
33039	1	1	100.0%	0	0.0%	0	0.0%	0	0.0%	1	100.0%
33156	292	35	12.0%	6	2.1%	15	5.1%	15	5.1%	282	96.6%
33157	898	387	43.1%	93	10.4%	81	9.0%	88	9.8%	777	86.5%
33158	64	5	7.8%	3	4.7%	4	6.3%	6	9.4%	63	98.4%
33170	167	112	67.1%	26	15.6%	31	18.6%	27	16.2%	135	80.8%
33176	598	181	30.3%	41	6.9%	48	8.0%	47	7.9%	551	92.1%
33177	771	286	37.1%	71	9.2%	45	5.8%	53	6.9%	707	91.7%
33186	885	188	21.2%	33	3.7%	70	7.9%	85	9.6%	835	94.4%
33187	213	51	23.9%	21	9.9%	15	7.0%	22	10.3%	196	92.0%
33189	323	127	39.3%	33	10.2%	27	8.4%	32	9.9%	295	91.3%
33190	100	42	42.0%	11	11.0%	10	10.0%	12	12.0%	91	91.0%
33196	647	129	19.9%	18	2.8%	52	8.0%	58	9.0%	616	95.2%
South Miami-Dade	7,192	2,898	40.3%	756	10.5%	588	8.2%	648	9.0%	6,301	87.6%
Miami-Dade	32,277	10,733	33.3%	2,985	9.2%	2,766	8.6%	3,248	10.1%	28,729	89.0%

Source: Florida Department of Health, Office of Vital Statistics. These data correspond to those published in the Florida Vital Statistics Annual Report for 2003.

Attachment II-B.

Late/No Prenatal Care by Zip Code, North Miami-Dade 2000-2003

Zip Code	2000			2001			2002			2003		
	Live Births	Late/No Care	Percent	Live Births	Late/No Care	Percent	Live Births	Late/No Care	Percent	Live Births	Late/No Care	Percent
33010	570	14	2.5%	534	6	1.1%	538	5	0.9%	532	6	1.1%
33012	821	15	1.8%	819	5	0.6%	811	3	0.4%	823	8	1.0%
33013	374	7	1.9%	402	3	0.7%	356	3	0.8%	338	2	0.6%
33014	491	6	1.2%	530	6	1.1%	517	2	0.4%	539	5	0.9%
33015	888	15	1.7%	866	6	0.7%	839	4	0.5%	959	6	0.6%
33016	665	7	1.1%	644	4	0.6%	642	6	0.9%	625	2	0.3%
33018	519	3	0.6%	538	5	0.9%	577	3	0.5%	516	4	0.8%
33054	490	16	3.3%	481	12	2.5%	494	27	5.5%	493	18	3.7%
33055	719	21	2.9%	716	19	2.7%	676	12	1.8%	686	19	2.8%
33056	537	16	3.0%	585	13	2.2%	551	19	3.4%	547	12	2.2%
33127	532	14	2.6%	502	18	3.6%	453	15	3.3%	518	14	2.7%
33137	260	12	4.6%	246	16	6.5%	263	5	1.9%	236	5	2.1%
33138	397	6	1.5%	405	13	3.2%	423	8	1.9%	396	8	2.0%
33139	278	5	1.8%	289	1	0.3%	307	3	1.0%	354	3	0.8%
33140	239	1	0.4%	244	1	0.4%	239	0	0.0%	268	2	0.7%
33141	494	7	1.4%	485	9	1.9%	504	8	1.6%	493	5	1.0%
33142	848	44	5.2%	878	40	4.6%	847	23	2.7%	841	31	3.7%
33147	1003	38	3.8%	890	41	4.6%	857	35	4.1%	824	27	3.3%
33150	495	20	4.0%	505	18	3.6%	467	22	4.7%	513	17	3.3%
33154	141	1	0.7%	165	0	0.0%	184	0	0.0%	178	2	1.1%
33160	325	4	1.2%	347	3	0.9%	323	4	1.2%	400	9	2.3%
33161	991	28	2.8%	976	29	3.0%	933	18	1.9%	910	28	3.1%
33162	805	17	2.1%	728	21	2.9%	673	12	1.8%	748	19	2.5%
33167	335	14	4.2%	312	11	3.5%	297	9	3.0%	297	9	3.0%
33168	436	10	2.3%	448	12	2.7%	426	11	2.6%	398	9	2.3%
33169	689	21	3.0%	716	30	4.2%	615	16	2.6%	620	26	4.2%
33179	516	7	1.4%	529	8	1.5%	509	6	1.2%	506	10	2.0%
33180	231	1	0.4%	263	3	1.1%	285	0	0.0%	284	4	1.4%
33181	294	9	3.1%	336	7	2.1%	269	3	1.1%	299	8	2.7%
North Miami-Dade	15,383	379	2.5%	15,379	360	2.3%	14,875	282	1.9%	15,141	318	2.1%
Miami-Dade	16,005	659	4.1%	16,013	631	3.9%	15,438	506	3.3%	32,277	511	1.6%

Source: Florida Department of Health, Office of Vital Statistics. These data correspond to those published in the Florida Vital Statistics Annual Report

Attachment II-B (Continued).

Late/No Prenatal Care by Zip Code, Central Miami-Dade 2000-2003

Zip Code	2000			2001			2002			2003		
	Live Births	Late/No Care	Percent	Live Births	Late/No Care	Percent	Live Births	Late/No Care	Percent	Live Births	Late/No Care	Percent
33109	6	0	0.0%	4	0	0.0%	6	0	0.0%	5	0	0.0%
33122	4	0	0.0%	6	0	0.0%	4	0	0.0%	5	0	0.0%
33125	654	13	2.0%	667	11	1.6%	660	10	1.5%	655	12	1.8%
33126	548	8	1.5%	608	7	1.2%	535	3	0.6%	561	4	0.7%
33128	101	5	5.0%	106	6	5.7%	131	5	3.8%	113	2	1.8%
33129	147	2	1.4%	136	1	0.7%	143	0	0.0%	150	1	0.7%
33130	257	6	2.3%	266	5	1.9%	290	12	4.1%	278	5	1.8%
33131	75	1	1.3%	97	1	1.0%	101	2	2.0%	107	0	0.0%
33132	44	3	6.8%	45	1	2.2%	40	0	0.0%	34	0	0.0%
33133	353	3	0.8%	368	3	0.8%	389	4	1.0%	368	5	1.4%
33134	366	2	0.5%	372	2	0.5%	389	1	0.3%	378	1	0.3%
33135	401	8	2.0%	391	8	2.0%	388	5	1.3%	422	6	1.4%
33136	269	14	5.2%	229	12	5.2%	264	9	3.4%	261	9	3.4%
33143	395	6	1.5%	354	2	0.6%	362	6	1.7%	366	2	0.5%
33144	220	2	0.9%	255	0	0.0%	247	4	1.6%	270	1	0.4%
33145	269	2	0.7%	315	1	0.3%	295	1	0.3%	268	1	0.4%
33146	123	0	0.0%	123	0	0.0%	126	0	0.0%	124	0	0.0%
33149	180	0	0.0%	195	1	0.5%	157	0	0.0%	198	2	1.0%
33155	485	3	0.6%	456	4	0.9%	482	3	0.6%	455	5	1.1%
33165	525	4	0.8%	540	1	0.2%	517	0	0.0%	523	1	0.2%
33166	289	7	2.4%	303	3	1.0%	277	3	1.1%	296	3	1.0%
33172	499	5	1.0%	527	6	1.1%	518	7	1.4%	516	3	0.6%
33173	397	9	2.3%	375	2	0.5%	386	1	0.3%	369	1	0.3%
33174	310	5	1.6%	293	5	1.7%	302	4	1.3%	350	2	0.6%
33175	550	6	1.1%	592	4	0.7%	528	3	0.6%	539	1	0.2%
33178	406	2	0.5%	499	1	0.2%	527	3	0.6%	592	2	0.3%
33182	197	1	0.5%	181	1	0.6%	204	0	0.0%	160	1	0.6%
33183	478	1	0.2%	470	3	0.6%	448	4	0.9%	470	4	0.9%
33184	203	1	0.5%	184	0	0.0%	170	0	0.0%	212	0	0.0%
33185	147	1	0.7%	161	1	0.6%	218	1	0.5%	249	3	1.2%
33192	1	0	0.0%	*	9	*	1	0	0.0%	*	0	*
33193	656	5	0.8%	642	0	0.0%	662	1	0.2%	636	7	1.1%
33194	1	0	0.0%	4	1	25.0%	5	0	0.0%	14	0	0.0%
Central Miami-Dade	9,556	125	1.3%	9,764	102	1.0%	9,772	92	0.9%	9,944	84	0.8%
Miami-Dade	32,028	659	2.1%	32,169	631	2.0%	31,853	506	1.6%	32,277	511	1.6%

Source: Florida Department of Health, Office of Vital Statistics. These data correspond to those published in the Florida Vital Statistics Annual Report for 2000, 2001, 2002 and 2

Attachment II-B (Continued).

Late/No Prenatal Care by Zip Code, South Miami-Dade 2000-2003

Zip Code	2000			2001			2002			2003		
	Live Births	Late/No Care	Percent	Live Births	Late/No Care	Percent	Live Births	Late/No Care	Percent	Live Births	Late/No Care	Percent
33030	794	42	5.3%	842	58	6.9%	867	49	5.7%	788	32	4.1%
33031	67	3	4.5%	43	0	0.0%	52	0	0.0%	55	1	1.8%
33032	377	11	2.9%	377	11	2.9%	426	12	2.8%	432	6	1.4%
33033	498	27	5.4%	518	22	4.2%	546	20	3.7%	555	8	1.4%
33034	337	14	4.2%	294	19	6.5%	341	19	5.6%	351	11	3.1%
33035	51	2	3.9%	49	0	0.0%	48	0	0.0%	52	1	1.9%
33039	1	1	100.0%	*	*	*	2	0	0.0%	1	0	0.0%
33156	323	3	0.9%	300	2	0.7%	306	1	0.3%	292	0	0.0%
33157	858	15	1.7%	828	15	1.8%	874	10	1.1%	898	18	2.0%
33158	56	0	0.0%	61	0	0.0%	67	0	0.0%	64	0	0.0%
33170	199	11	5.5%	160	7	4.4%	189	5	2.6%	167	1	0.6%
33176	648	7	1.1%	657	6	0.9%	644	4	0.6%	598	7	1.2%
33177	746	7	0.9%	760	16	2.1%	798	6	0.8%	771	12	1.6%
33186	848	2	0.2%	839	4	0.5%	833	3	0.4%	885	4	0.5%
33187	243	1	0.4%	272	1	0.4%	237	0	0.0%	213	0	0.0%
33189	332	4	1.2%	309	1	0.3%	319	2	0.6%	323	7	2.2%
33190	90	1	1.1%	87	1	1.1%	99	0	0.0%	100	0	0.0%
33196	621	4	0.6%	630	6	1.0%	558	1	0.2%	647	1	0.2%
South Miami-Dade	7,089	155	2.2%	7,026	169	2.4%	7,206	132	1.8%	7,192	109	1.5%
Miami-Dade	32,028	659	11.0%	32,169	631	12.2%	31,853	506	11.0%	32,277	511	11.0%

Source: Florida Department of Health, Office of Vital Statistics. These data correspond to those published in the Florida Vital Statistics Annual Report for 2000, 2001, 2002 and 2003.

Attachment II-C.

Live Births, Fetal, Infant, Neonatal, and Post Neonatal Mortality Rates (per 1,000 Live Births) by Zip Code in North Miami-Dade County, 2003

Zip Code	Total Live Births	Fetal Deaths	Fetal Mortality Rate	Infant Deaths	Infant Mortality Rate	Neonatal Deaths	Neonatal Mortality Rate	Post neonatal Deaths	Post Neonatal Mortality Rate
33010	532	3	5.6	1	1.9	1	1.9	0	0.0
33012	823	2	2.4	5	6.1	4	4.9	1	1.2
33013	338	3	8.9	0	0.0	0	0.0	0	0.0
33014	539	1	1.9	0	0.0	0	0.0	0	0.0
33015	959	7	7.3	5	5.2	2	2.1	3	3.1
33016	625	4	6.4	3	4.8	2	3.2	1	1.6
33018	516	2	3.9	4	7.8	3	5.8	1	1.9
33054	493	8	16.2	4	8.1	2	4.1	2	4.1
33055	686	10	14.6	4	5.8	2	2.9	2	2.9
33056	547	8	14.6	9	16.5	6	11.0	3	5.5
33127	518	12	23.2	5	9.7	2	3.9	3	5.8
33137	236	3	12.7	3	12.7	1	4.2	2	8.5
33138	396	6	15.2	1	2.5	0	0.0	1	2.5
33139	354	0	0.0	0	0.0	0	0.0	0	0.0
33140	268	2	7.5	0	0.0	0	0.0	0	0.0
33141	493	3	6.1	1	2.0	1	2.0	0	0.0
33142	841	10	11.9	7	8.3	4	4.8	3	3.6
33147	824	11	13.3	10	12.1	8	9.7	2	2.4
33150	513	6	11.7	4	7.8	3	5.8	1	1.9
33154	178	4	22.5	1	5.6	0	0.0	1	5.6
33160	400	1	2.5	2	5.0	2	5.0	0	0.0
33161	910	16	17.6	8	8.8	5	5.5	3	3.3
33162	748	12	16.0	7	9.4	3	4.0	4	5.3
33167	297	2	6.7	5	16.8	3	10.1	2	6.7
33168	398	6	15.1	5	12.6	3	7.5	2	5.0
33169	620	11	17.7	7	11.3	5	8.1	2	3.2
33179	506	3	5.9	2	4.0	1	2.0	1	2.0
33180	284	0	0.0	1	3.5	1	3.5	0	0.0
33181	299	6	20.1	3	10.0	1	3.3	2	6.7
North Miami-Dade	15,141	162	10.7	107	7.1	65	4.3	42	2.8
Miami-Dade	32,277	278	8.6	193	6.0	123	3.8	70	2.2

Source: Florida Department of Health, Office of Vital Statistics. These data correspond to those published in the Florida Vital Statistics Annual Report for 2003.

* Zip Codes with zero deaths have been excluded from the table

Attachment II-C (Continued).

Live Births, Fetal, Infant, Neonatal, and Post Neonatal Mortality Rates by Zip Code in Central Miami-Dade County, 2003

Zip Code	Total Live Births	Fetal Deaths	Fetal Mortality Rate	Infant Deaths	Infant Mortality Rate	Neonatal Deaths	Neonatal Mortality Rate	Post Neonatal Deaths	Post Neonatal Mortality Rate
33125	655	6	9.2	5	7.6	3	4.6	2	3.1
33126	561	1	1.8	2	3.6	2	3.6	0	0.0
33128	113	1	8.8	1	8.8	0	0.0	1	8.8
33129	150	1	6.7	0	0.0	0	0.0	0	0.0
33130	278	2	7.2	1	3.6	0	0.0	1	3.6
33131	107	0	0.0	1	9.3	0	0.0	1	9.3
33133	368	5	13.6	3	8.2	1	2.7	2	5.4
33134	378	1	2.6	1	2.6	1	2.6	0	0.0
33135	422	1	2.4	2	4.7	2	4.7	0	0.0
33136	261	1	3.8	7	26.8	4	15.3	3	11.5
33143	366	2	5.5	4	10.9	4	10.9	0	0.0
33144	270	2	7.4	2	7.4	2	7.4	0	0.0
33145	268	1	3.7	1	3.7	1	3.7	0	0.0
33149	198	0	0.0	1	5.1	1	5.1	0	0.0
33155	455	4	8.8	2	4.4	2	4.4	0	0.0
33165	523	4	7.6	0	0.0	0	0.0	0	0.0
33166	296	4	13.5	1	3.4	0	0.0	1	3.4
33172	516	5	9.7	3	5.8	2	3.9	1	1.9
33173	369	4	10.8	2	5.4	1	2.7	1	2.7
33174	350	3	8.6	3	8.6	3	8.6	0	0.0
33175	539	4	7.4	1	1.9	0	0.0	1	1.9
33178	592	1	1.7	1	1.7	0	0.0	1	1.7
33182	160	0	0.0	1	6.3	1	6.3	0	0.0
33183	470	3	6.4	2	4.3	1	2.1	1	2.1
33184	212	1	4.7	0	0.0	0	0.0	0	0.0
33185	249	3	12.0	2	8.0	2	8.0	0	0.0
33193	636	1	1.6	0	0.0	0	0.0	0	0.0
Central Miami-Dade	9,944	61	6.1	49	4.9	33	3.3	16	1.6
Miami-Dade	32,277	278	8.6	193	6.0	123	3.8	70	2.2

Source: Florida Department of Health, Office of Vital Statistics. These data correspond to those published in the Florida Vital Statistics Annual

* Zip Codes with zero deaths have been excluded from the table

Attachment II-C (Continued).

Live Births, Fetal, Infant, Neonatal, and Post Neonatal Mortality Rates by Zip Code in South Miami-Dade County, 2003

Zip Code	Total Live Births	Fetal Deaths	Fetal Mortality Rate	Infant Deaths	Infant Mortality Rate	Neonatal Deaths	Neonatal Mortality Rate	Postneonatal Deaths	Post Neonatal Mortality Rate
33030	788	5	6.3	3	3.8	1	1.3	2	2.5
33032	432	6	13.9	4	9.3	2	4.6	2	4.6
33033	555	4	7.2	4	7.2	1	1.8	3	5.4
33034	351	3	8.5	3	8.5	2	5.7	1	2.8
33035	52	1	19.2	0	0.0	0	0.0	0	0.0
33156	292	1	3.4	0	0.0	0	0.0	0	0.0
33157	898	8	8.9	7	7.8	5	5.6	2	2.2
33170	167	3	18.0	2	12.0	2	12.0	0	0.0
33176	598	4	6.7	2	3.3	2	3.3	0	0.0
33177	771	5	6.5	2	2.6	2	2.6	0	0.0
33186	885	2	2.3	3	3.4	3	3.4	0	0.0
33187	213	4	18.8	1	4.7	1	4.7	0	0.0
33189	323	4	12.4	2	6.2	1	3.1	1	3.1
33190	100	1	10.0	0	0.0	0	0.0	0	0.0
33196	647	4	6.2	4	6.2	3	4.6	1	1.5
South Miami-Dade	7,192	55	7.6	37	5.1	25	3.5	12	1.7
Miami-Dade	32,277	278	8.6	193	6.0	123	3.8	70	2.2

Source: Florida Department of Health, Office of Vital Statistics. These data correspond to those published in the Florida Vital Statistics Annual Report for 2003.

* Zip Codes with zero deaths have been excluded from the table