

A HEALTHY BABY BEGINS WITH YOU



*Infant mortality is not only a personal tragedy, it is a community tragedy.
When a baby dies, part of the community's future dies.*





**Black
Infant
HEALTH
Practice Initiative**

What is the Black Infant Health Practice Initiative (BIHPI)?

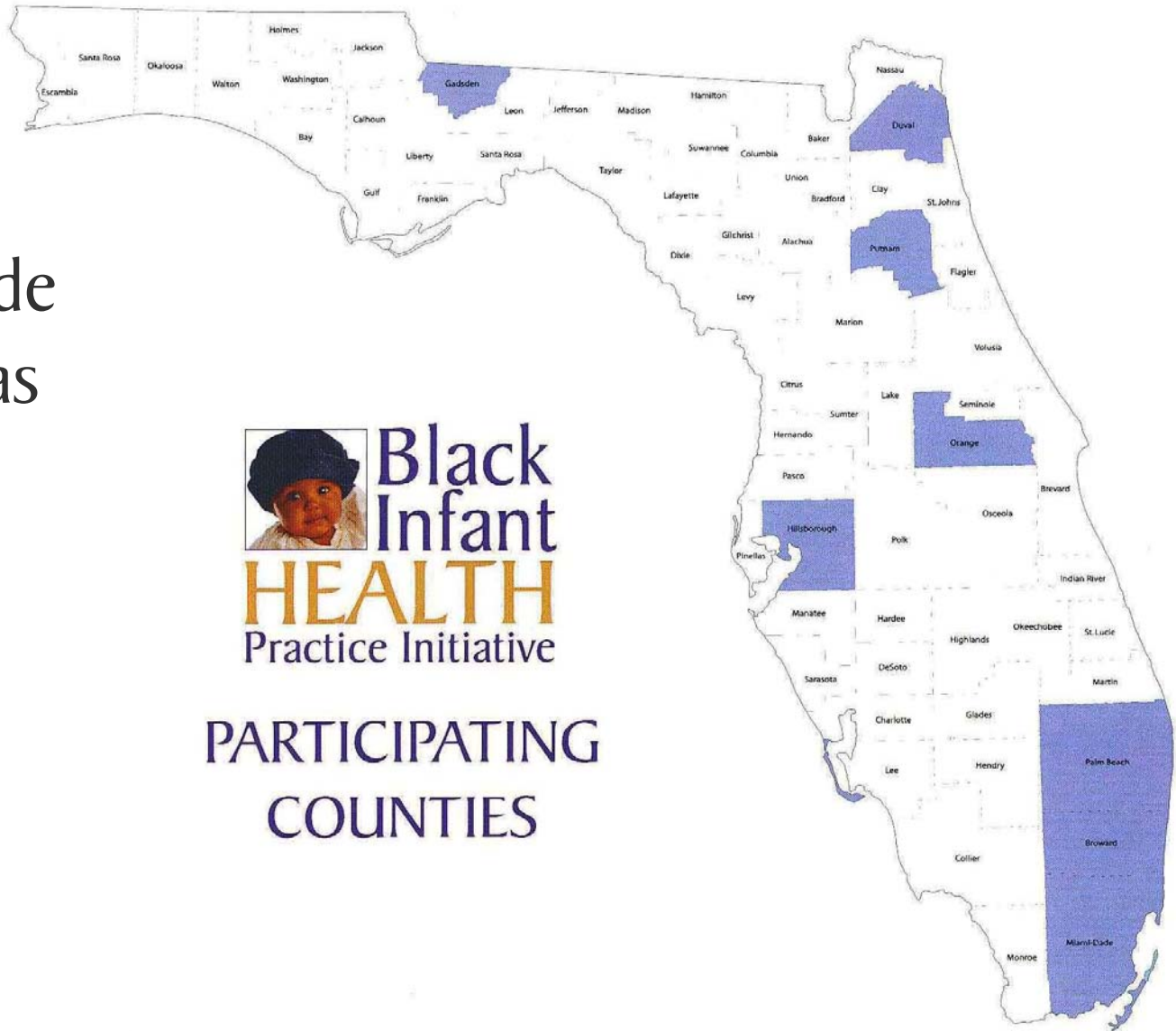
❖ Background

❖ Authority: Section 383.2162, Florida Statutes. Black Infant Health Practice Initiative

❖ Political Climate

Who is Participating?

Miami-Dade
County was
one of 8
counties
selected.



**Black
Infant
HEALTH**
Practice Initiative

**PARTICIPATING
COUNTIES**

What is the purpose?



To convene a group of community leaders and experts in Fetal-Infant Mortality Review to address the gap/disparities in infant health/morbidity and mortality between black infants and others.

Goal

To eliminate the disparities in Black infant deaths.

A Black woman living in Miami-Dade County is two and a half times more likely than her white neighbor to see her baby die.



What is the Community Action Team (CAT)?

Team comprised of community leaders representing government, consumers, key institutions, and health and human services organizations that reviews information/data, prioritizes identified issues, develops recommendations to improve outcomes for families regarding fetal and infant mortality.

What are disparities?

When one group of people gets sick and/or dies sooner and at a higher rate than other groups of people.



Disparities



Social Policy

Bad Housing

Weathering

Bad Neighborhoods

Unemployment

Poverty

Hopelessness

Stress

Limited Access
to Care

Smoking

Adverse Environmental
Conditions

Under-
Education

Family Support

Poor Working Conditions

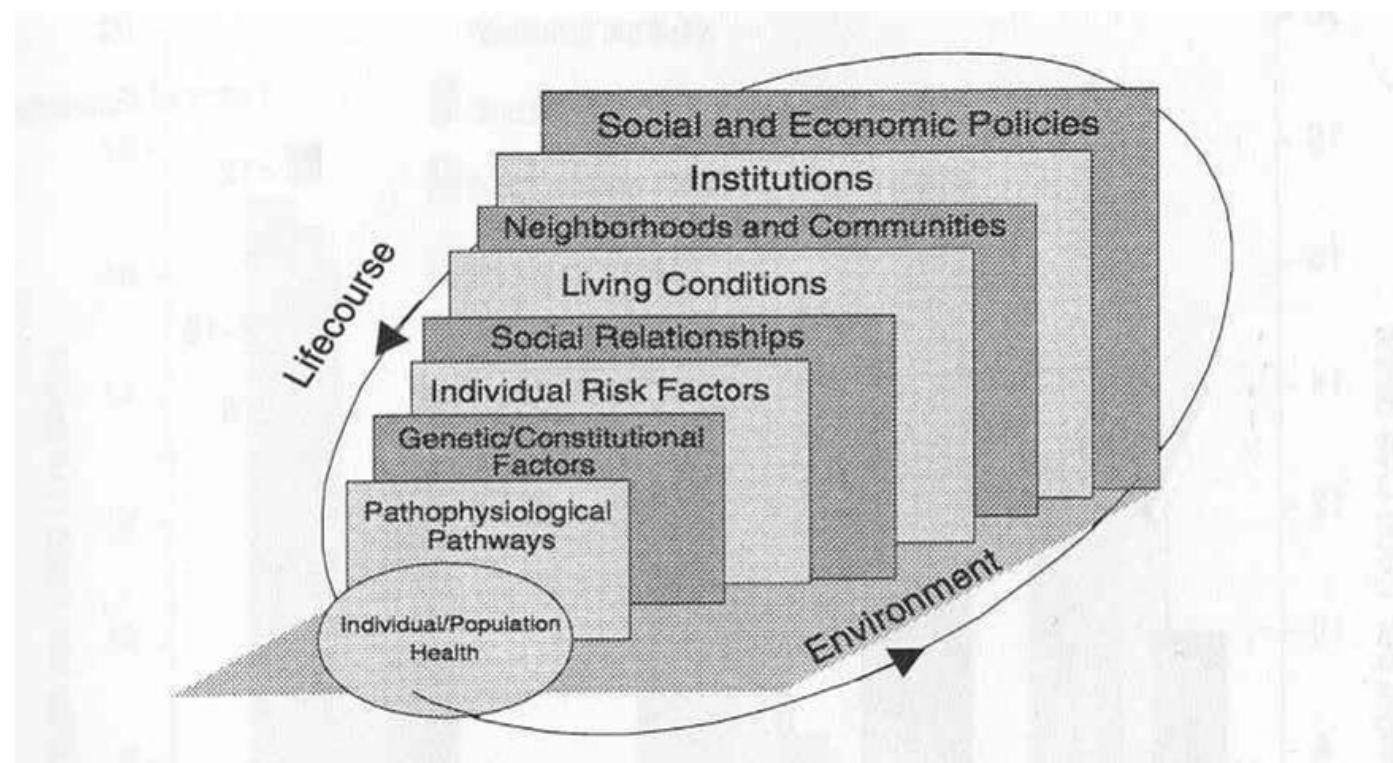
Racism

Lack of Access to
Good Nutrition

What Causes Disparities?



The Circles of Influence on Health



Social Determinants of Health

- Income
- Wealth
- Racism
- Stressful experiences (chronic)
- Resource limitations
- Social capital
- Housing quality and availability
- Employment security
- Food security
- Social exclusion
- Language barriers
- Working conditions
- Education
- Early childhood care
- Legislation, regulations

Disparity: Contributing Factors

- Health care
- Behavior*
- Culture
- Social factors
- Environmental factors
- Weathering”
- Racism
- Economic factors
- Neighborhood factors
- National, state or local Policies
- Stress

** Not shown to be consistent contributor across all diseases*

(Kington and Nickens) in: America Becoming: Racial Trends and their Consequences, National Academy Press, 2000



What We Say About Social Factors:

- Too hard to change
- Not realistic to expect factors to ever change
- Out of the realm of public health or medical providers
- Too expensive



Change the Question

From:

What are the disparities?

And

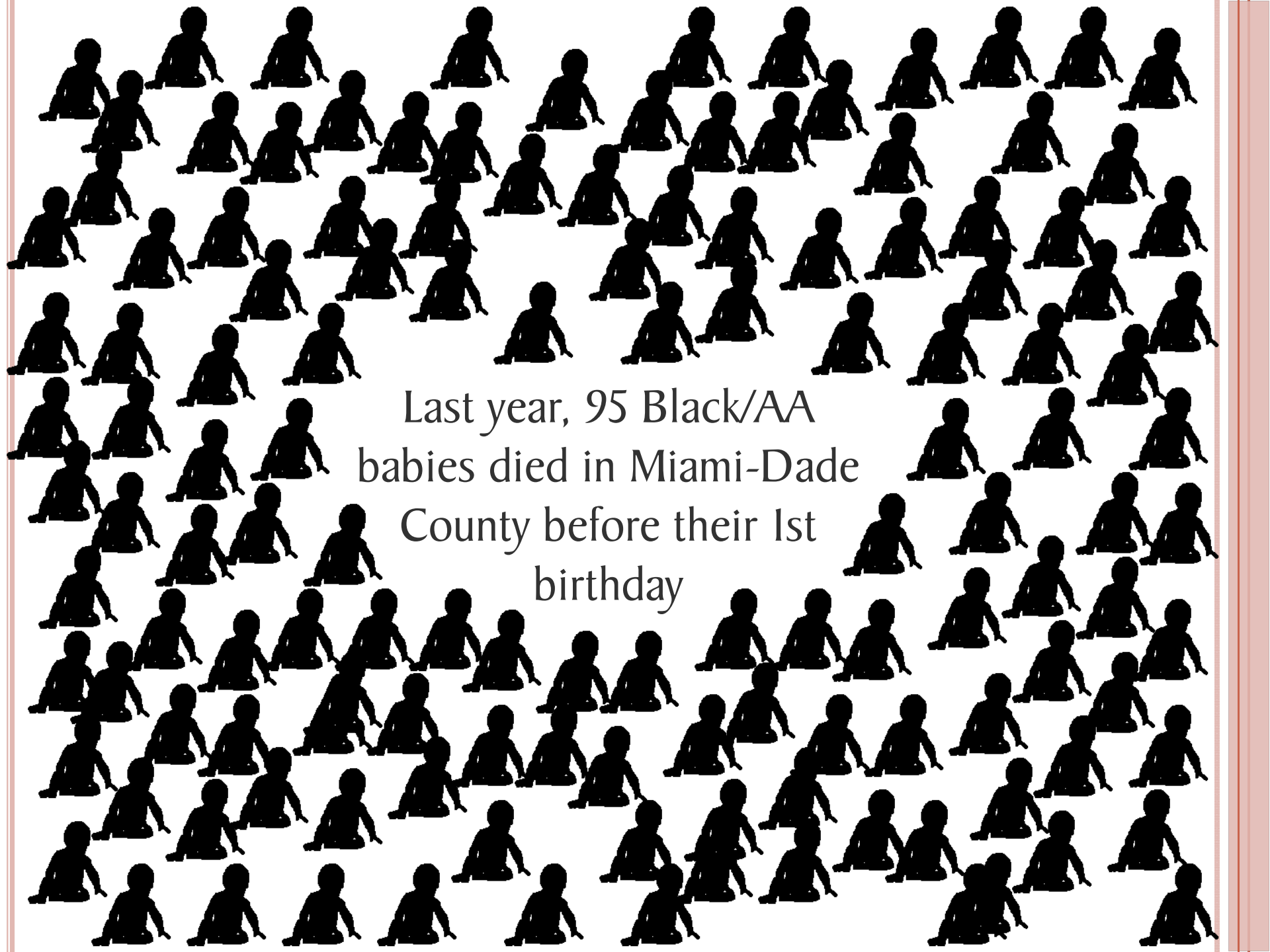
How can we reduce them?

To:

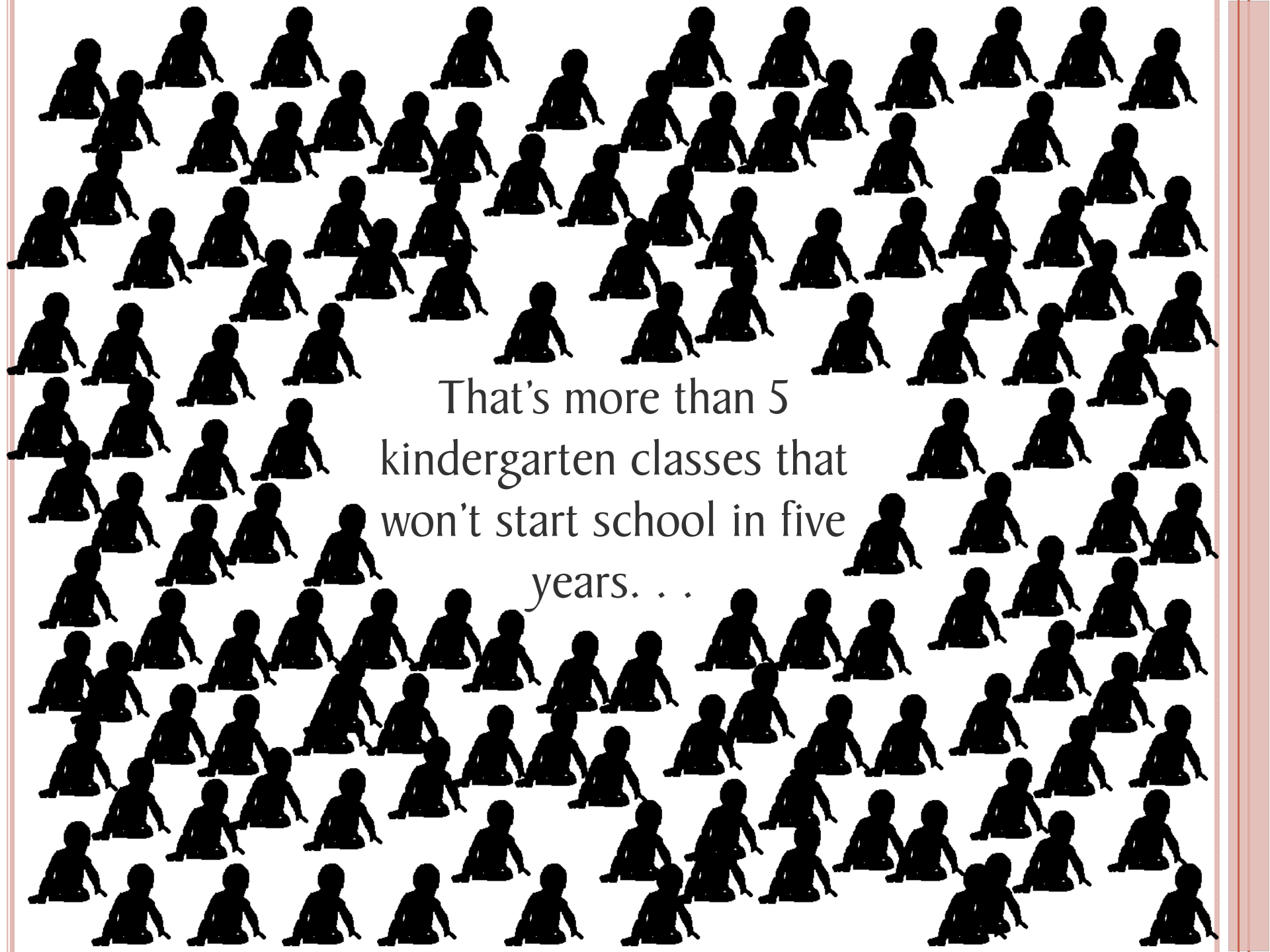
How do we make it *more feasible* to address social contributors to health and health disparities?

What do disparities look like?





Last year, 95 Black/AA
babies died in Miami-Dade
County before their 1st
birthday



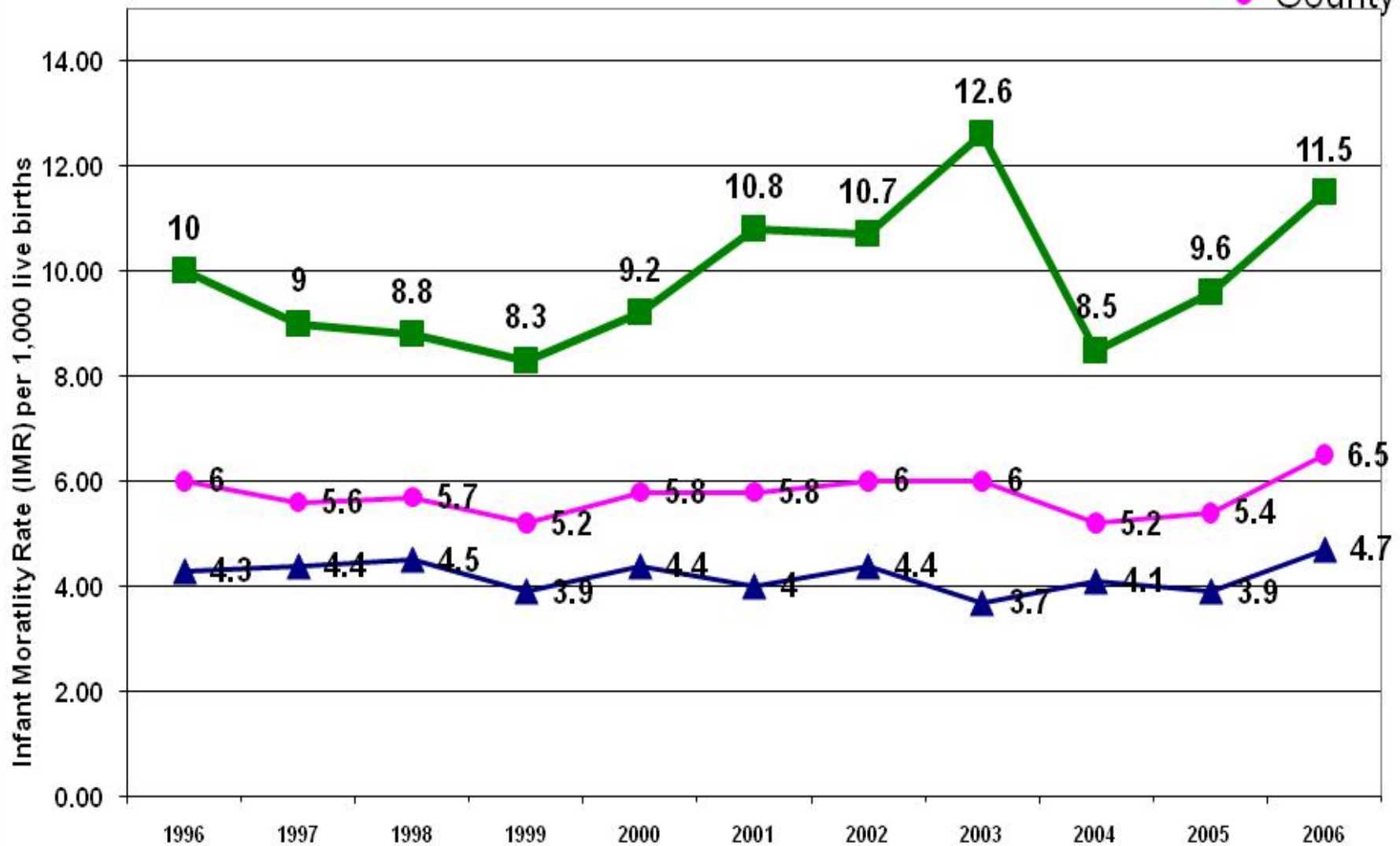
That's more than 5
kindergarten classes that
won't start school in five
years. . .

Infant Deaths per 1,000 Live Births

Comparison of Rates - Whites and Blacks

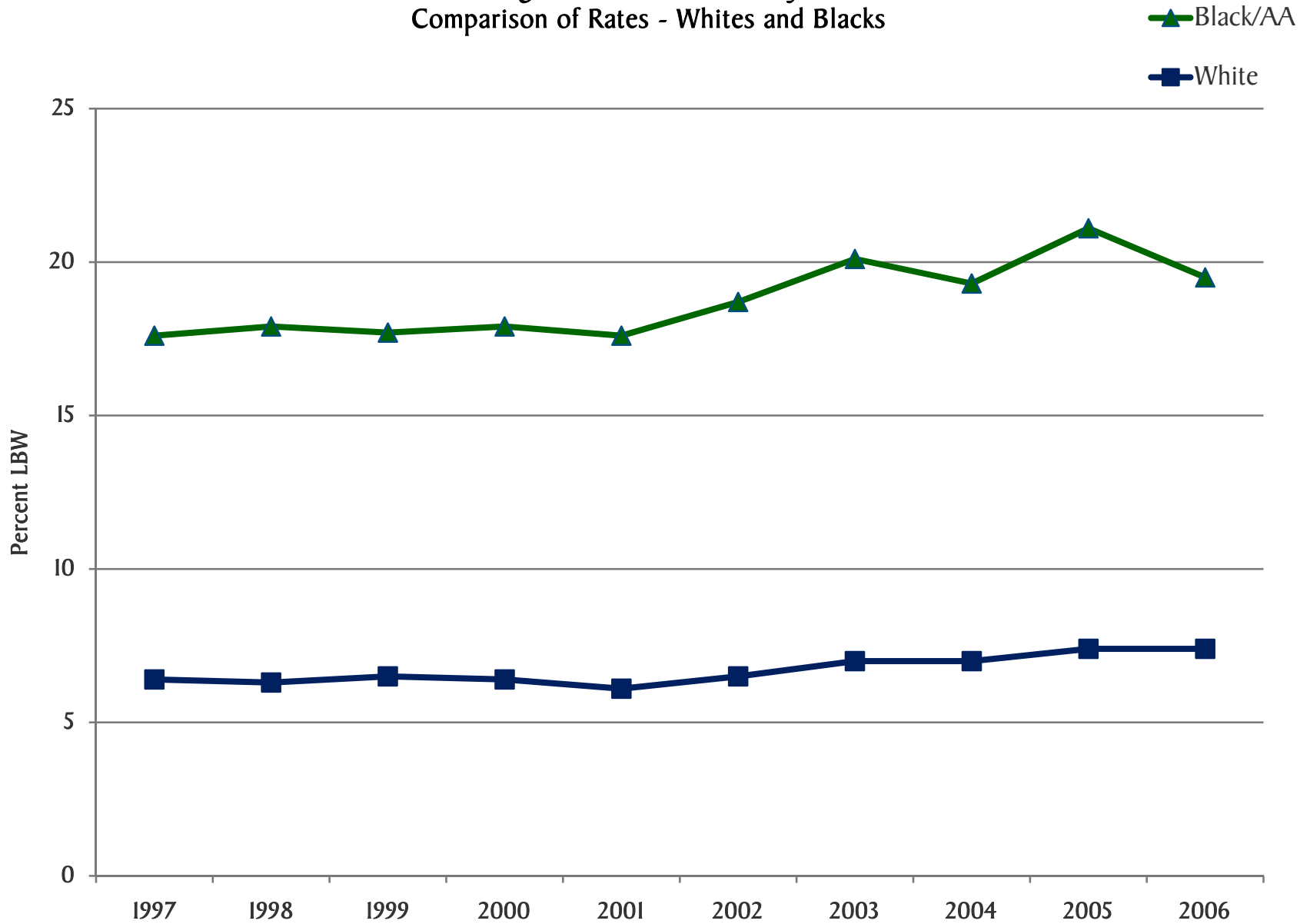
Miami-Dade County, 1996-2006

- Black
- White
- County

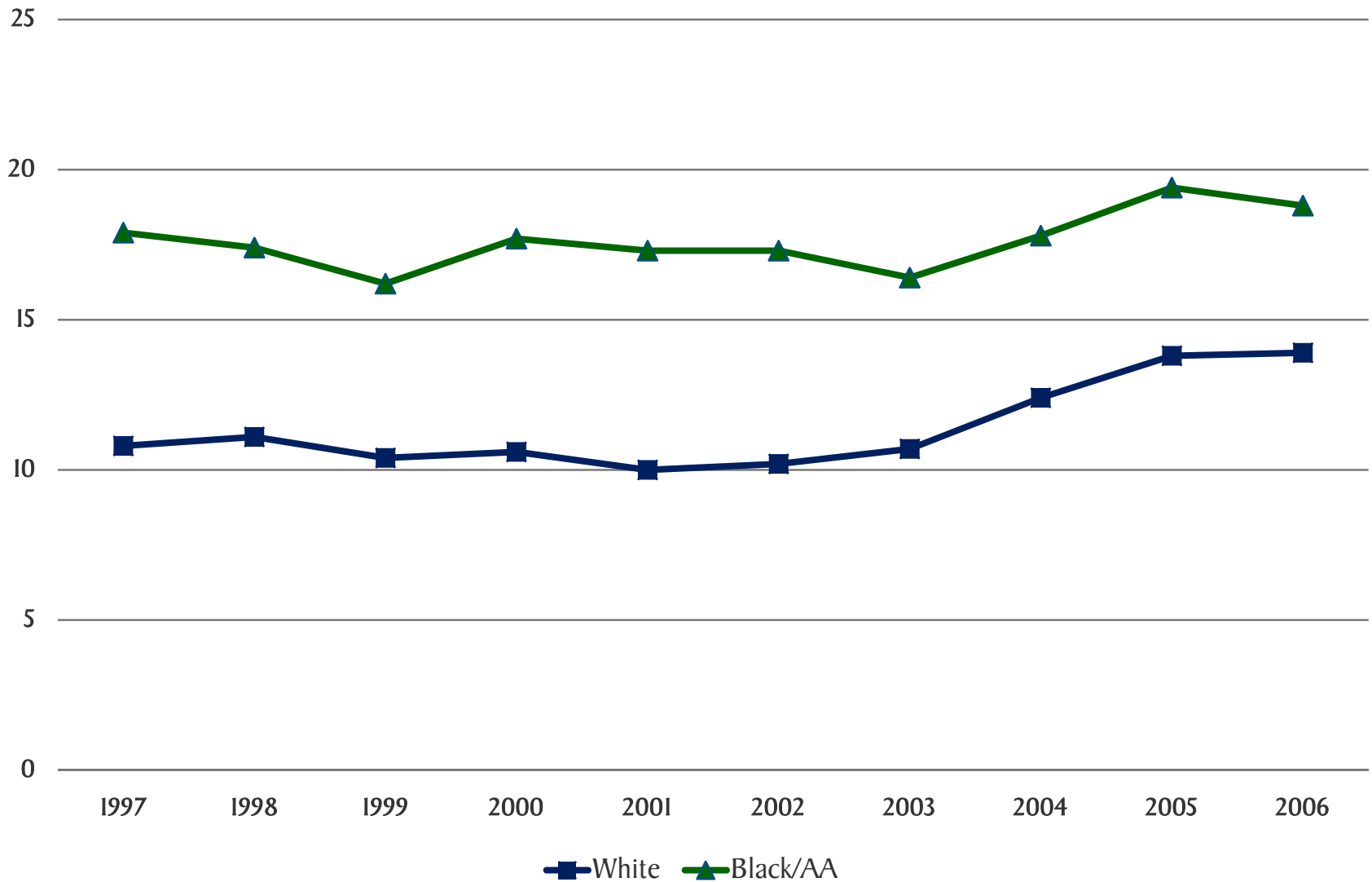


Data Source: Florida Department of Health, Office of Planning, Evaluation & Data

Low Birth Weight, Miami-Dade County, 1997-2006 Comparison of Rates - Whites and Blacks



Pre-Term Delivery (<37 weeks),
Miami-Dade County, 1997-2006
Comparison of Rates - Whites and Blacks



WHY IS THIS IMPORTANT TO US?



FOR MORE INFORMATION

Healthy Start Coalition of Miami-Dade

701 SW 27th Avenue

Suite 1401

Miami, FL 33135

Phone: (305) 541-0210

Fax: (305) 541-0213

www.hscmd.org

BIHPI@hscmd.org

Black Infant Health Practice Initiative

http://www.healthystartcoalition.org/index.cfm/fuseaction/Research.Black_Infant