



# Black Infant HEALTH Practice Initiative

2008



Healthy Start Coalition  
of Miami-Dade

## **Black Infant Health Practice Initiative Glossary and Information**

**The Black Infant Health Practice Initiative** is a general revenue funded project, pursuant to the terms of 383.2162 (F.S.), that focuses on investigating racial disparities in fetal and infant mortality through a case review process. The Department is contracting with State and Federal Healthy Start Coalitions/consortia to: determine the significant social, economic, cultural, safety, and health system factors that are associated with racial disparities in infant mortality rates through a practice collaborative approach using perinatal periods of risk and modified fetal infant mortality reviews; develop a series of interventions and policies that address these factors to improve the service systems and community resources; participate in the implementation of community-based interventions and policies that address racial disparities in infant mortality rates; and assess the progress of the interventions.

### **Scope of Service:**

Funding is available for Healthy Start Coalitions/Consortia to: develop an interdisciplinary team to oversee the process in its local community; use perinatal periods of risk methodology when appropriate to examine infant deaths in its community; and use a modified FIMR approach to examine infant deaths in its community

### **Major Program Goals:**

The goal of this program is to create a black infant health practice initiative. The initiative will include reviews of infant mortality in select counties in the state in order to identify factors in the health and social services system.

**Case Review Team** – team comprised of health, social service, and other infant mortality experts. The review team examines case summaries, charts and conducts interviews, and recommends proper community action when appropriate.

**Coalition** – any state healthy start program

**Community Action Team** – team comprised of community leaders representing government, consumers, key institutions, and health and human services organizations that reviews recommendations, prioritizes identified issues, designs and implements interventions to improve outcomes for families regarding fetal and infant mortality.

**Consortium** – any federal healthy start program.

**Department:** Florida Department of Health

**Funding Period:** January 1, 2008 through June 30, 2008.

**FIMR** – Fetal and Infant Mortality Review.

**Infant Mortality** – the death of a live-born infant within 364 days after the infant's birth.

**Perinatal Periods of Risk (PPOR)** – a comprehensive analysis tool addressing both fetal and infant deaths in a community with the goal of examining potential opportunity gaps between population groups and targeting further investigations and prevention efforts for identified gaps.

**Practice Collaborative**- a coordinated effort between the Florida Department of Health, State Healthy Start Coalitions, Federal Healthy Start Consortia, Florida A & M University and the University of South Florida in the implementation of the Black Infant Health Practice Initiative.

**State Fiscal Year:** Period of time from July 1 through June 30.



# Black Infant HEALTH Practice Initiative

## DEPARTMENT OF HEALTH

- Oversight
- Contract Management
- Technical Assistance
- Facilitation of data analysis/  
acquisition
- Consultation

## CONSORTIUM/COALITIONS

1. Community Engagement
  - Local Coordination
  - Training
  - Community Report
  - Data Collection for qualitative analysis
2. Fetal Infant Mortality Review
  - Develop and Implement
  - Case Review Team
  - Community Action Team
3. Perinatal Periods of Risk
  - Update
  - Share Outcomes
4. Identify issues regarding systems of care
  - Data collection for qualitative info

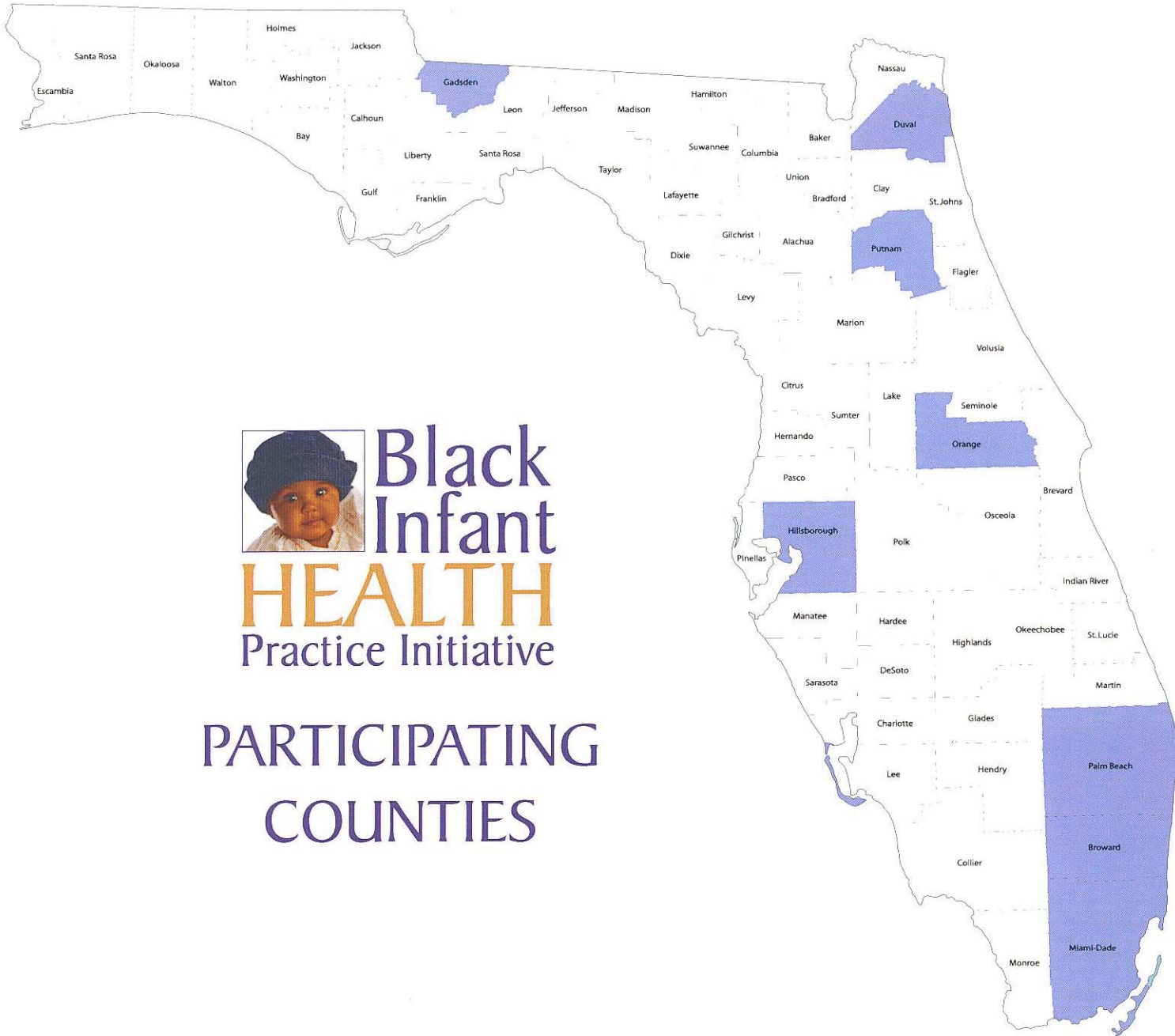
## PRACTICE COLLABORATIVE

- Update community status
- Identify needs
- Coordinate training
- Facilitate coordination with Universities and DOH
- Coordinate face-to-face meetings and conference calls
- Develop methodology standards

## UNIVERSITIES

- Literature Review
- Scientific guidance in developing community assessments
- Technical Assistance
- Training
- Qualitative data compilation
- Training at high professional/  
national expert level
- Secondary data analyses
- Lead/facilitate development of methodology
- Compilation of info on best practices
- Creation of database for qualitative data as needed
- Evaluation

**FINAL REPORT**  
of outcomes to Legislature  
(Advocacy)



**Black  
Infant  
HEALTH**  
Practice Initiative

**PARTICIPATING  
COUNTIES**



**CHARLIE CRIST**  
GOVERNOR

June 27, 2007

Mr. Kurt S. Browning  
Secretary of State  
R.A. Gray Building  
500 S. Bronough Street  
Tallahassee, FL 32399

Dear Secretary Browning:

By the authority vested in me as Governor of Florida, under the provisions of Article III, Section 8, of the Constitution of Florida, I do hereby transmit Council Substitute for House Bill 1269, with my signature, enacted during the 109<sup>th</sup> Session of the Legislature of Florida, since statehood in 1845, during the Regular Session of 2007 and entitled:

An act relating to infant mortality ...

This bill creates the black infant health practice initiative to determine factors that contribute to elevated rates of infant mortality in minority populations, and to develop strategies to address the disparity. The bill appropriates \$1 million to the Department of Health to implement this initiative in both urban and rural areas.

I fully support the intent of the bill but have concerns that the bill does not provide the Department of Health procedures for awarding grants and monitoring these programs. As stewards of public funds, we must ensure that clear and transparent guidelines are in place to award grants. Given these concerns, I am directing the Department of Health to develop a fair methodology for awarding grants and provide strong accountability measures to ensure that grant funds are spent appropriately.

This bill provides an important step in addressing racial disparities in infant mortality. For this reason, I hereby sign into law, Council Substitute for House Bill 1269 and ask the Legislature to consider the concerns identified herein.

Sincerely,

Charlie Crist

CC/dmm

2007 JUN 27 PM 3:15  
OFFICE OF THE GOVERNOR  
TALLAHASSEE, FLORIDA

ENROLLED  
CS/HB 1269

2007 Legislature

1 A bill to be entitled

2 An act relating to infant mortality; providing legislative  
3 intent relating to the black infant health practice  
4 initiative; providing definitions; providing objectives;  
5 providing for administration of the initiative; requiring  
6 a local community to develop a team to serve as a part of  
7 a statewide practice collaborative; requiring healthy  
8 start coalitions to conduct case reviews; requiring  
9 certain public universities or colleges to provide  
10 technical assistance, to assist in determining certain  
11 criteria, and to present findings and make  
12 recommendations; requiring the Department of Health to  
13 distribute funding to the coalitions; providing duties of  
14 each participating coalition; requiring the department to  
15 award grants; requiring the department to conduct an  
16 annual evaluation of the initiative; requiring each  
17 coalition to submit a report to the Governor, the  
18 Legislature, and the department; providing immunity from  
19 liability to participating coalitions; requiring the  
20 department to adopt rules; providing a timeframe for  
21 reviewing cases; providing an appropriation; providing an  
22 effective date.

23  
24 WHEREAS, the Legislature recognizes that pregnancy, birth,  
25 and infant health outcomes are internationally recognized as  
26 measures of health for a community, as these outcomes are  
27 indicators of population sustenance, growth, and quality of  
28 life, and

Page 1 of 6

CODING: Words ~~stricken~~ are deletions; words underlined are additions.

hb1269-02-er

ENROLLED  
CS/HB 1269

2007 Legislature

29 WHEREAS, the Legislature also recognizes that infant  
30 mortality disproportionately affects African-American infants,  
31 as the resident infant mortality rate in 2005 for nonwhites is  
32 12.5 per 1,000 live births, which is more than double the infant  
33 mortality rate for whites, which is 5.3 per 1,000 live births,  
34 and

35 WHEREAS, the Legislature recognizes that a continued effort  
36 to identify the causes of racial disparities in infant mortality  
37 benefits all citizens of Florida, NOW, THEREFORE,

38  
39 Be It Enacted by the Legislature of the State of Florida:

40  
41 Section 1. Black infant health practice initiative.--

42 (1) LEGISLATIVE INTENT.--It is the intent of the  
43 Legislature to create a black infant health practice initiative.  
44 The initiative shall include reviews of infant mortality in  
45 select counties in this state in order to identify factors in  
46 the health and social services systems contributing to higher  
47 mortality rates among African-American infants. It is also the  
48 intent of the Legislature that the initiative produce  
49 recommendations on how to address the factors identified by the  
50 reviews as contributing to these higher infant mortality rates.

51 (2) DEFINITIONS.--As used in this section, the term:

52 (a) "Coalition" means a federal or local healthy start  
53 coalition or consortium.

54 (b) "Department" means the Department of Health.

55 (c) "FIMR" means a fetal and infant mortality review  
56 committee.

ENROLLED  
CS/HB 1269

2007 Legislature

57 (d) "Infant mortality" means the death of a live-born  
58 infant within 364 days after the infant's birth.

59 (e) "Infant mortality rate" means the number of infant  
60 deaths per 1,000 annual live births.

61 (3) OBJECTIVES.--The objectives of the initiative include:

62 (a) Determining the significant social, economic,  
63 cultural, safety, and health system factors that are associated  
64 with racial disparities in infant mortality rates through a  
65 practice collaborative approach using perinatal periods of risk  
66 and modified fetal infant mortality reviews.

67 (b) Developing a series of interventions and policies that  
68 address these factors to improve the service systems and  
69 community resources.

70 (c) Participating in the implementation of community-based  
71 interventions and policies that address racial disparities in  
72 infant mortality rates.

73 (d) Assessing the progress of interventions.

74 (4) ADMINISTRATION.--The black infant health practice  
75 initiative shall be administered through a collaboration among  
76 the department, federal and state healthy start coalitions, and  
77 public universities or colleges having expertise in public  
78 health. A local community shall develop an interdisciplinary  
79 team to serve as part of a statewide practice collaborative.  
80 Both perinatal periods of risk and fetal infant mortality  
81 reviews may be used. A case review shall be conducted by each  
82 participating healthy start coalition using professional in-  
83 house staff or through contracts with an outside professional.  
84 Public universities or colleges having expertise in public

## ENROLLED

CS/HB 1269

2007 Legislature

85 health shall provide technical assistance in developing a  
86 standard research methodology based on the fetal and infant  
87 mortality review method. Public universities or colleges having  
88 expertise in public health shall assist each participating  
89 coalition in determining the selection of comparison groups,  
90 identifying data collection and housing issues, and presenting  
91 findings and recommendations. A single methodology for the  
92 reviews conducted through the initiative shall be used by each  
93 participating coalition. The department shall distribute funding  
94 to each coalition that participates in the initiative through  
95 annual grants that are subject to specific appropriations by the  
96 Legislature.

97 (5) FUNCTIONS OF THE INITIATIVE.--Each participating  
98 coalition shall:

99 (a) Develop an interdisciplinary team to oversee the  
100 process in its local community.

101 (b) Use perinatal periods of risk methodology when  
102 appropriate to examine infant deaths in its community.

103 (c) Use a modified FIMR approach to examine infant deaths  
104 in its community by:

105 1. Creating a case review FIMR team that may include  
106 obstetricians, neonatologists, perinatologists, pathologists,  
107 registered nurses, social workers, hospital and clinic  
108 administrators, social service agencies, researchers, citizens  
109 and consumers, and other experts considered necessary to conduct  
110 a standardized review of infant mortality.

111 2. Hiring or contracting with professional staff that may  
112 include licensed nurses and social workers to abstract and

ENROLLED  
CS/HB 1269

2007 Legislature

113 present individual case reviews that omit identifying  
114 information regarding infant deaths compared to live births to  
115 the case review team.

116 3. Developing abstracts of sample infant mortalities and  
117 comparative live births that omit identifying information and  
118 that identify social, economic, cultural, safety, and health  
119 system factors that are associated with racial disparities in  
120 infant mortality rates. The number of abstracted cases that must  
121 be conducted by each participating coalition shall be determined  
122 by a standard research methodology developed in conjunction with  
123 a public university or college having expertise in public  
124 health.

125 4. Presenting abstracts that omit identifying information  
126 to its case review team at least quarterly for their review and  
127 discussion.

128 (d) Develop findings and recommendations for interventions  
129 and policy changes to reduce racial disparities in infant  
130 mortality.

131 (6) GRANT AWARDS.--The department shall award annual  
132 grants, subject to specific appropriations by the Legislature.  
133 The department shall award at least one grant to a coalition  
134 representing urban counties and at least one grant to a  
135 coalition representing rural counties. Priority of grant awards  
136 shall be given to those coalitions representing counties having  
137 an average nonwhite infant mortality rate at least 1.75 times  
138 greater than the white infant mortality rate between 2003 and  
139 2005 and an average of at least 40 nonwhite infant deaths  
140 between 2003 and 2005 for urban counties or an average of at

## ENROLLED

CS/HB 1269

2007 Legislature

141 least 5 nonwhite infant deaths between 2003 and 2005 for rural  
142 counties.

143 (7) EVALUATIONS AND REPORTS.--The department shall conduct  
144 an annual evaluation of the implementation of the initiative  
145 describing which areas are participating in the initiative, the  
146 number of reviews conducted by each participating coalition,  
147 grant balances, and recommendations for modifying the  
148 initiative. All participating coalitions shall produce a report  
149 on their collective findings and recommendations by January 1,  
150 2010, to the Governor, the President of the Senate, the Speaker  
151 of the House of Representatives, and the Secretary of Health.

152 (8) IMMUNITY.--Each participating coalition, its case  
153 review team members, and professional staff are immune from  
154 liability pursuant to s. 766.101, Florida Statutes.

155 (9) RULEMAKING.--The department shall adopt rules,  
156 pursuant to ss. 120.536(1) and 120.54, Florida Statutes,  
157 necessary to implement this section.

158 (10) IMPLEMENTATION TIMELINE.--The department shall  
159 administer grants in a manner that will allow each participating  
160 coalition to begin reviewing cases no later than January 1,  
161 2008.

162 Section 2. The sum of \$1 million in nonrecurring revenue  
163 is appropriated from the General Revenue Fund to the Department  
164 of Health for the 2007-2008 fiscal year to implement the  
165 provisions of this act.

166 Section 3. This act shall take effect July 1, 2007.

**MCH Health Problem Analysis for  
Miami-Dade  
Calendar Year 2006**

**Population**

	Miami-Dade		Florida	
	Number	Percentage	Number	Percentage
Total	2,442,170		18,440,700	
White	1,853,466	75.89	14,909,913	80.85
Nonwhite	588,704	24.11	3,530,787	19.15
Black	534,545	21.89	3,023,821	16.40
Other	54,159	2.22	506,966	2.75

Data Source: Population Estimates from the Florida Legislature, Office of Economic & Demographic Research

**Births**

	Miami-Dade		Florida	
	Number	Percentage	Number	Percentage
Total	33,739		237,166	
White *	24,630	73.00	174,147	73.43
Black *	8,282	24.55	50,808	21.42
Other *	782	2.32	11,889	5.01
Hispanic **	21,572	63.94	70,094	29.55
Non-Hispanic **	12,109	35.89	166,057	70.02

\*Regardless of ethnicity. Does not include persons whose race is unknown.

\*\*Regardless of race. Does not include persons whose ethnicity is unknown.

Data Source: Florida Department of Health, Office of Vital Statistics

**Infant Deaths - Actual vs Expected**

Total Births	Actual Infant Deaths	Expected Infant Deaths	Significance
33,739	218	246.80	L
		Actual Infant Death Rate per 1,000 Births	Expected Infant Death Rate per 1,000 Births
		6.46	7.31

H=Actual Rate is Significantly Higher than the Expected Rate

L=Actual Rate is Significantly Lower than the Expected Rate

N=Actual Rate is Not Significantly Different than the Expected Rate

Data Source: Department of Health - Infant, Maternal and Reproductive Health using Florida Vital Statistics data

**Low Birthweight - Actual vs Expected**

Total Births	Actual LBW Births	Expected LBW Births	Significance
33,739	2,901	3,008.20	L
		Actual Percent LBW	Expected Percent LBW
		8.60	8.92

H=Actual Rate is Significantly Higher than the Expected Rate

L=Actual Rate is Significantly Lower than the Expected Rate

N=Actual Rate is Not Significantly Different than the Expected Rate

Data Source: Department of Health - Infant, Maternal and Reproductive Health using Florida Vital Statistics data

# MCH Health Problem Analysis for Miami-Dade Calendar Year 2006

## Deaths Due to Leading Causes of Infant Mortality

Perinatal Conditions	113	Unintentional Injury	7
Congenital Anomalies	50	Heart Disease	3
Sudden Infant Death Syndrome	2	Other Causes	43

Data Source: Florida Department of Health, Office of Vital Statistics

## Infant Mortality

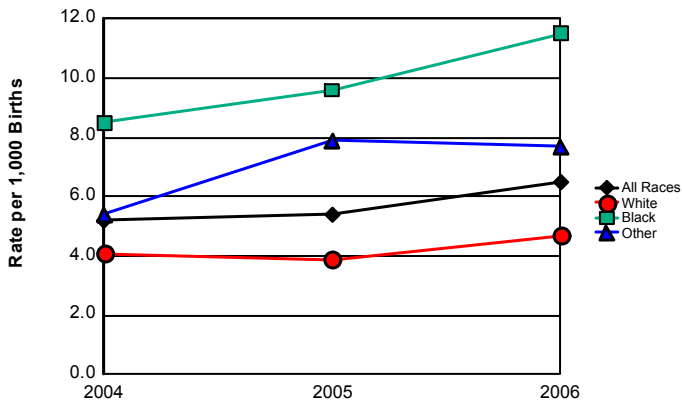
	2004		2005		2006		Comparison to Previous Year	Comparison to Florida Rate
	Miami-Dade	Florida	Miami-Dade	Florida	Miami-Dade	Florida		
<b>Total</b>	167	1,536	176	1,626	218	1,713	Increased	
<b>Rate per 1000</b>	5.2	7.0	5.4	7.2	6.5	7.2	Increased	Below
<b>White *</b>	94	876	92	882	116	974	Increased	
<b>Rate per 1000</b>	4.1	5.5	3.9	5.3	4.7	5.6	Increased	Below
<b>Black *</b>	68	621	78	652	95	653	Increased	
<b>Rate per 1000</b>	8.5	13.2	9.6	13.6	11.5	12.9	Increased	Below
<b>Other *</b>	5	38	6	91	6	84	Same	
<b>Rate per 1000</b>	5.4	3.6	7.9	7.8	7.7	7.1	Decreased	Above
<b>Hispanic **</b>	58	242	91	373	102	399	Increased	
<b>Rate per 1000</b>	2.9	4.1	4.5	5.9	4.7	5.7	Increased	Below
<b>Non-Hispanic **</b>	73	1,244	81	1,246	112	1,303	Increased	
<b>Rate per 1000</b>	6.1	7.8	6.9	7.7	9.2	7.8	Increased	Above

\* Regardless of ethnicity. Does not include persons whose race is unknown.

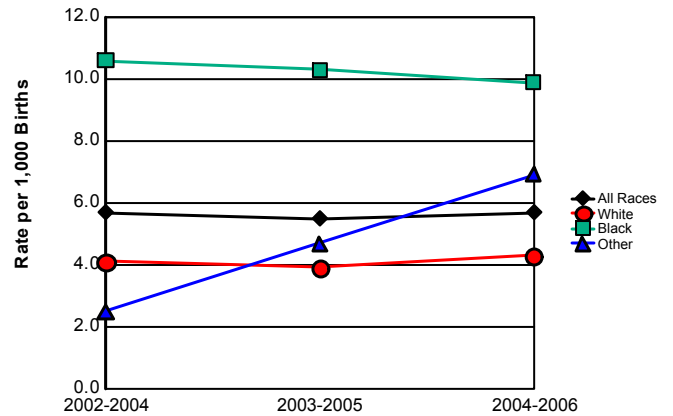
\*\* Regardless of race. Does not include persons whose ethnicity is unknown.

Data Source: Florida Department of Health, Office of Vital Statistics

**Infant Mortality Rates**



**Infant Mortality Trend  
Three-Year Rolling Averages**



	2004	2005	2006
All Races	5.2	5.4	6.5
White	4.1	3.9	4.7
Black	8.5	9.6	11.5
Other	5.4	7.9	7.7

	2002-2004	2003-2005	2004-2006
All Races	5.7	5.5	5.7
White	4.1	3.9	4.3
Black	10.6	10.3	9.9
Other	2.5	4.7	6.9

# MCH Health Problem Analysis for Miami-Dade Calendar Year 2006

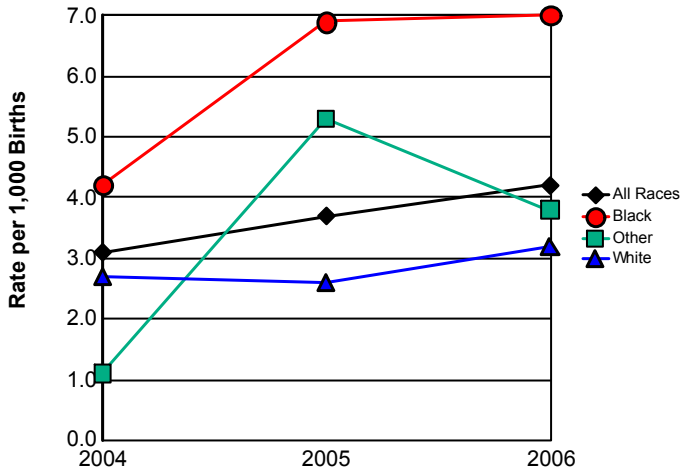
## Neonatal Mortality

	2004		2005		2006		Comparison to Previous Year	Comparison to Florida Rate
	Miami-Dade	Florida	Miami-Dade	Florida	Miami-Dade	Florida		
<b>Total</b>	98	989	121	1,024	141	1,122	Increased	
<b>Rate per 1000</b>	3.1	4.5	3.7	4.5	4.2	4.7	Increased	Below
<b>White *</b>	63	563	61	544	79	630	Increased	
<b>Rate per 1000</b>	2.7	3.5	2.6	3.3	3.2	3.6	Increased	Below
<b>Black *</b>	34	401	56	422	58	436	Increased	
<b>Rate per 1000</b>	4.2	8.5	6.9	8.8	7.0	8.6	Increased	Below
<b>Other *</b>	1	24	4	57	3	54	Decreased	
<b>Rate per 1000</b>	1.1	2.3	5.3	4.9	3.8	4.5	Decreased	Below
<b>Hispanic **</b>	32	146	65	245	75	281	Increased	
<b>Rate per 1000</b>	1.6	2.5	3.2	3.8	3.5	4.0	Increased	Below
<b>Non-Hispanic **</b>	35	801	52	773	62	831	Increased	
<b>Rate per 1000</b>	2.9	5.0	4.4	4.8	5.1	5.0	Increased	Above

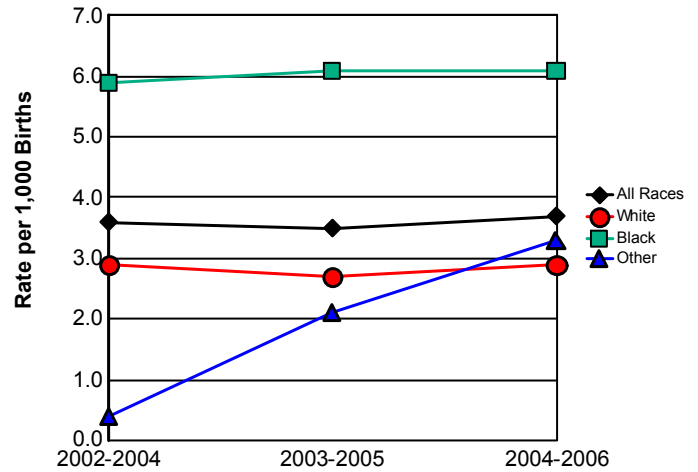
\*Regardless of ethnicity. Does not include persons whose race is unknown.  
\*\*Regardless of race. Does not include persons whose ethnicity is

Data Source: Florida Department of Health, Office of Vital Statistics

### Neonatal Mortality Rates



### Neonatal Mortality Trend Three-Year Rolling Averages



	2004	2005	2006
All Races	3.1	3.7	4.2
White	2.7	2.6	3.2
Black	4.2	6.9	7.0
Other	1.1	5.3	3.8

	2002-2004	2003-2005	2004-2006
All Races	3.6	3.5	3.7
White	2.9	2.7	2.9
Black	5.9	6.1	6.1
Other	0.4	2.1	3.3

# MCH Health Problem Analysis for Miami-Dade Calendar Year 2006

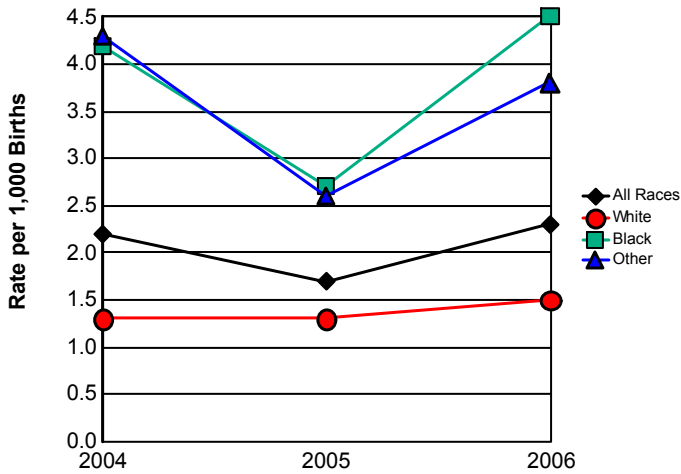
## Postneonatal Mortality

	2004		2005		2006		Comparison to Previous Year	Comparison to Florida Rate
	Miami-Dade	Florida	Miami-Dade	Florida	Miami-Dade	Florida		
<b>Total</b>	69	547	55	602	77	591	Increased	
<b>Rate per 1000</b>	2.2	2.5	1.7	2.7	2.3	2.5	Increased	Below
<b>White *</b>	31	313	31	338	37	344	Increased	
<b>Rate per 1000</b>	1.3	2.0	1.3	2.0	1.5	2.0	Increased	Below
<b>Black *</b>	34	220	22	230	37	217	Increased	
<b>Rate per 1000</b>	4.2	4.7	2.7	4.8	4.5	4.3	Increased	Above
<b>Other *</b>	4	14	2	34	3	30	Increased	
<b>Rate per 1000</b>	4.3	1.3	2.6	2.9	3.8	2.5	Increased	Above
<b>Hispanic **</b>	26	96	26	128	27	118	Increased	
<b>Rate per 1000</b>	1.3	1.6	1.3	2.0	1.3	1.7	Same	Below
<b>Non-Hispanic **</b>	38	443	29	473	50	472	Increased	
<b>Rate per 1000</b>	3.2	2.8	2.5	2.9	4.1	2.8	Increased	Above

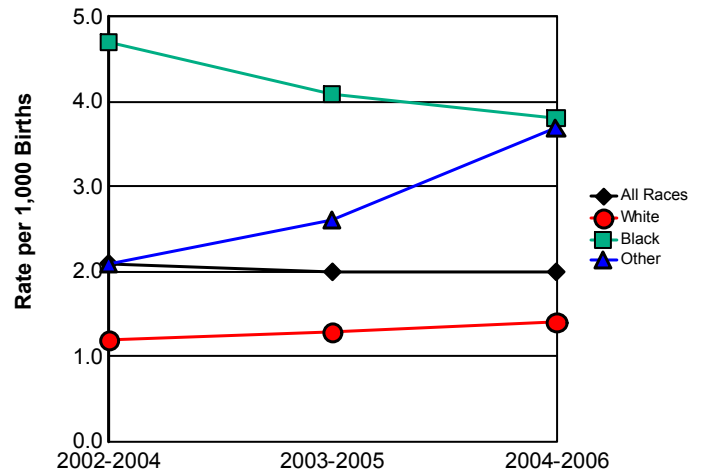
\*Regardless of ethnicity. Does not include persons whose race is unknown.  
 \*\* Regardless of race. Does not include persons whose ethnicity is unknown.

Data Source: Florida Department of Health, Office of Vital Statistics

### Postneonatal Mortality Rates



### Postneonatal Mortality Trend Three-Year Rolling Averages



	2004	2005	2006
All Races	2.2	1.7	2.3
White	1.3	1.3	1.5
Black	4.2	2.7	4.5
Other	4.3	2.6	3.8

	2002-2004	2003-2005	2004-2006
All Races	2.1	2.0	2.0
White	1.2	1.3	1.4
Black	4.7	4.1	3.8
Other	2.1	2.6	3.7

# MCH Health Problem Analysis for Miami-Dade Calendar Year 2006

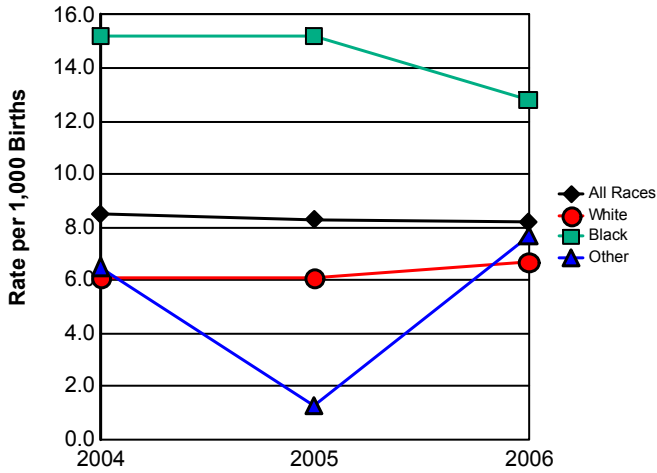
## Fetal Mortality

	2004		2005		2006		Comparison to Previous Year	Comparison to Florida Rate
	Miami-Dade	Florida	Miami-Dade	Florida	Miami-Dade	Florida		
<b>Total</b>	272	1,701	270	1,650	278	1,756	Increased	
<b>Rate per 1000</b>	8.5	7.8	8.3	7.3	8.2	7.4	Decreased	Above
<b>White *</b>	141	966	143	938	166	1,020	Increased	
<b>Rate per 1000</b>	6.1	6.0	6.1	5.6	6.7	5.9	Increased	Above
<b>Black *</b>	122	680	123	649	106	650	Decreased	
<b>Rate per 1000</b>	15.2	14.5	15.2	13.5	12.8	12.8	Decreased	Same
<b>Other *</b>	6	43	1	39	6	83	Increased	
<b>Rate per 1000</b>	6.5	4.1	1.3	3.3	7.7	7.0	Increased	Above
<b>Hispanic **</b>	88	328	72	309	135	446	Increased	
<b>Rate per 1000</b>	4.4	5.6	3.5	4.8	6.3	6.4	Increased	Below
<b>Non-Hispanic **</b>	95	1,243	66	1,172	134	1,285	Increased	
<b>Rate per 1000</b>	8.0	7.8	5.6	7.3	11.1	7.7	Increased	Above

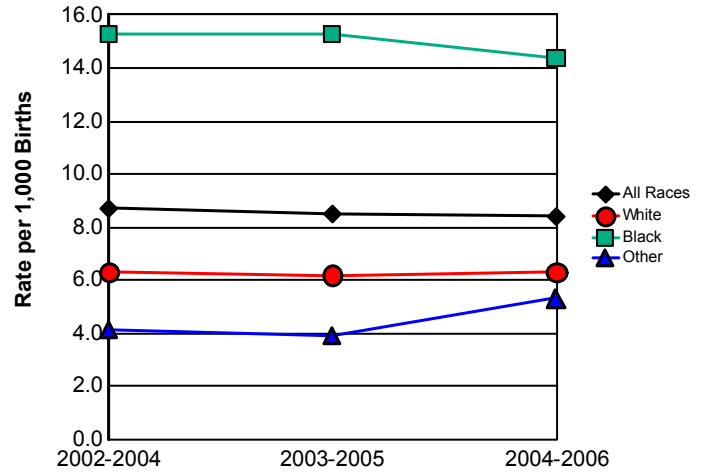
\* Regardless of ethnicity. Does not include persons whose race is unknown.

Data Source: Florida Department of Health, Office of Vital Statistics

### Fetal Mortality Rates



### Fetal Mortality Trend Three-Year Rolling Averages



	2004	2005	2006
All Races	8.5	8.3	8.2
White	6.1	6.1	6.7
Black	15.2	15.2	12.8
Other	6.5	1.3	7.7

	2002-2004	2003-2005	2004-2006
All Races	8.7	8.5	8.4
White	6.3	6.2	6.3
Black	15.3	15.3	14.4
Other	4.1	3.9	5.3

# MCH Health Problem Analysis for Miami-Dade Calendar Year 2006

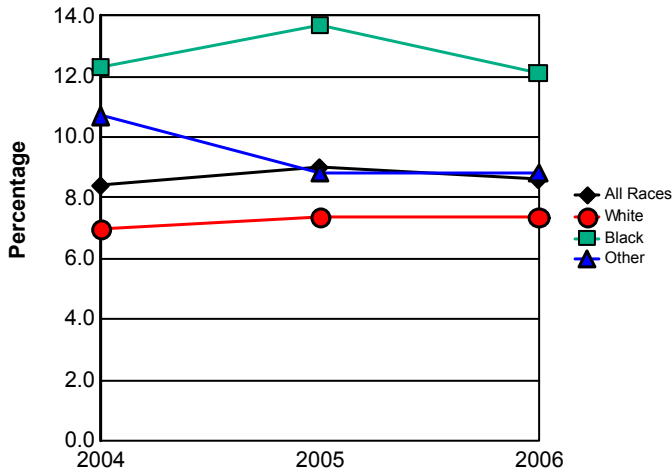
## Low Birthweight

	2004		2005		2006		Comparison to Previous Year	Comparison to Florida Rate
	Miami-Dade	Florida	Miami-Dade	Florida	Miami-Dade	Florida		
<b>Total</b>	2,703	18,670	2,918	19,802	2,901	20,714	Decreased	
<b>Percentage</b>	8.4	8.6	9.0	8.8	8.6	8.7	Decreased	Below
<b>White *</b>	1,607	11,570	1,729	12,221	1,823	12,848	Increased	
<b>Percentage</b>	7.0	7.2	7.4	7.4	7.4	7.4	Same	Same
<b>Black *</b>	991	6,134	1,112	6,521	1,003	6,822	Decreased	
<b>Percentage</b>	12.3	13.1	13.7	13.6	12.1	13.4	Decreased	Below
<b>Other *</b>	99	923	67	1,025	69	1,023	Increased	
<b>Percentage</b>	10.7	8.8	8.8	8.8	8.8	8.6	Same	Above
<b>Hispanic **</b>	1,394	4,100	1,508	4,493	1,561	4,948	Increased	
<b>Percentage</b>	7.0	7.0	7.4	7.0	7.2	7.1	Decreased	Above
<b>Non-Hispanic **</b>	1,293	14,459	1,398	15,210	1,334	15,669	Decreased	
<b>Percentage</b>	10.9	9.1	11.8	9.4	11.0	9.4	Decreased	Above

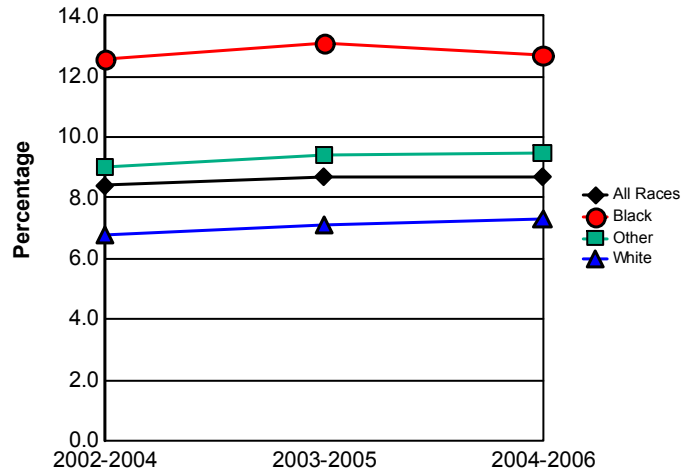
\* Regardless of ethnicity. Does not include persons whose race is unknown.

Data Source: Florida Department of Health, Office of Vital Statistics

### Percentage of Low Birthweight Births



### Low Birthweight Births Trend Three-Year Rolling Averages



	2004	2005	2006
All Races	8.4	9.0	8.6
White	7.0	7.4	7.4
Black	12.3	13.7	12.1
Other	10.7	8.8	8.8

	2002-2004	2003-2005	2004-2006
All Races	8.4	8.7	8.7
White	6.8	7.1	7.3
Black	12.6	13.1	12.7
Other	9.0	9.4	9.5

# MCH Health Problem Analysis for Miami-Dade Calendar Year 2006

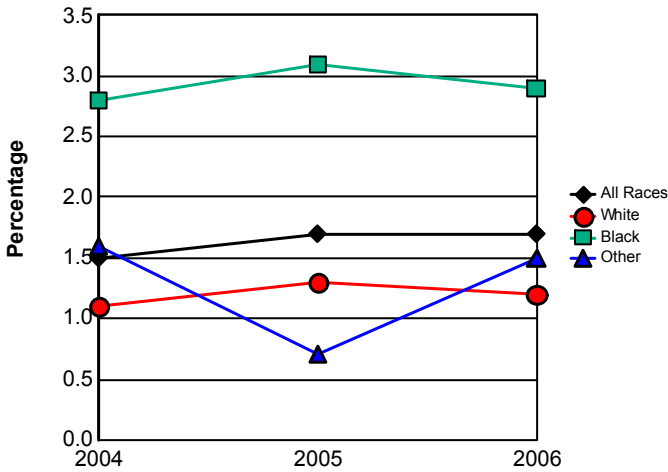
## Very Low Birthweight

	2004		2005		2006		Comparison to Previous Year	Comparison to Florida Rate
	Miami-Dade	Florida	Miami-Dade	Florida	Miami-Dade	Florida		
<b>Total</b>	491	3,491	566	3,637	557	3,807	Decreased	
<b>Percentage</b>	1.5	1.6	1.7	1.6	1.7	1.6	Same	Above
<b>White *</b>	247	1,862	304	1,960	300	2,075	Decreased	
<b>Percentage</b>	1.1	1.2	1.3	1.2	1.2	1.2	Decreased	Same
<b>Black *</b>	224	1,470	255	1,507	244	1,578	Decreased	
<b>Percentage</b>	2.8	3.1	3.1	3.1	2.9	3.1	Decreased	Below
<b>Other *</b>	15	139	5	162	12	147	Increased	
<b>Percentage</b>	1.6	1.3	0.7	1.4	1.5	1.2	Increased	Above
<b>Hispanic **</b>	211	674	275	779	267	816	Decreased	
<b>Percentage</b>	1.1	1.2	1.3	1.2	1.2	1.2	Decreased	Same
<b>Non-Hispanic **</b>	272	2,775	284	2,826	287	2,965	Increased	
<b>Percentage</b>	2.3	1.7	2.4	1.7	2.4	1.8	Same	Above

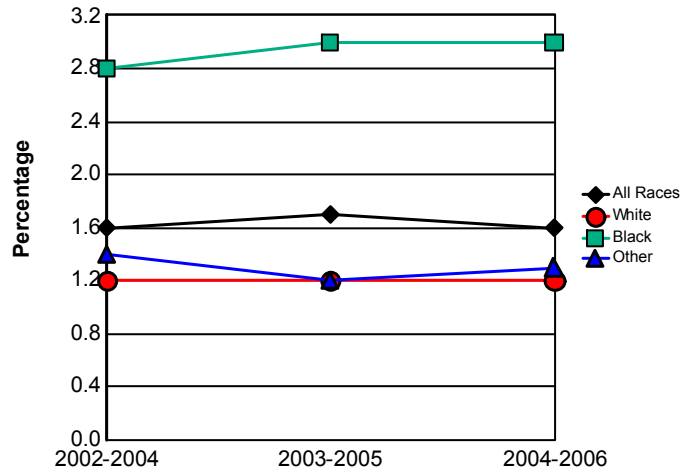
\*Regardless of ethnicity. Does not include persons whose race is unknown.

Data Source: Florida Department of Health, Office of Vital Statistics

### Percentage of Very Low Birthweight Births



### Very Low Birthweight Trend Three-Year Rolling Averages



	2004	2005	2006
All Races	1.5	1.7	1.7
White	1.1	1.3	1.2
Black	2.8	3.1	2.9
Other	1.6	0.7	1.5

	2002-2004	2003-2005	2004-2006
All Races	1.6	1.7	1.6
White	1.2	1.2	1.2
Black	2.8	3.0	3.0
Other	1.4	1.2	1.3

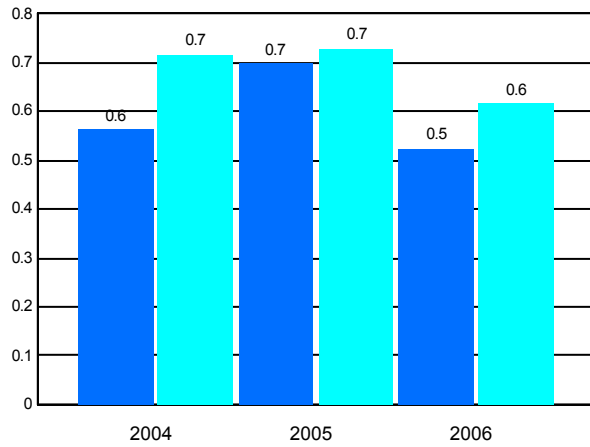
# MCH Health Problem Analysis for Miami-Dade Calendar Year 2006

## Births to Teens

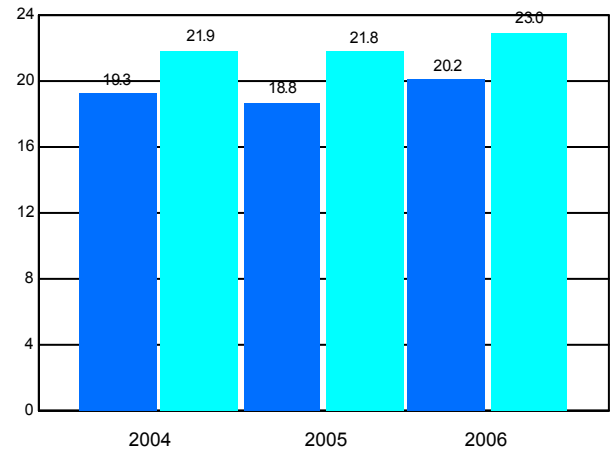
	2004		2005		2006		Comparison to Previous
	Miami-Dade	Florida	Miami-Dade	Florida	Miami-Dade	Florida	
<b>Mothers 10-14</b>							
Number	47	404	57	415	42	353	
Rate per 1,000	0.6	0.7	0.7	0.7	0.5	0.6	Decreased
<b>Mothers 15-17</b>							
Number	992	7,436	965	7,590	1,030	8,135	
Rate per 1,000	19.3	21.9	18.8	21.8	20.2	23.0	Increased
<b>Percentage of Repeat Births 15-19</b>	11.5	15.4	12.9	16.1	13.8	16.5	Increased

Data Source: Florida Department of Health, Office of Vital Statistics

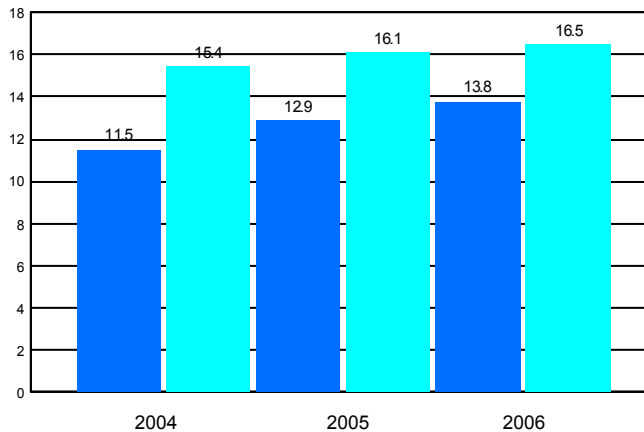
Births to Teens 10-14



Births to Teens 15-17



Repeat Births to Teens 15-19

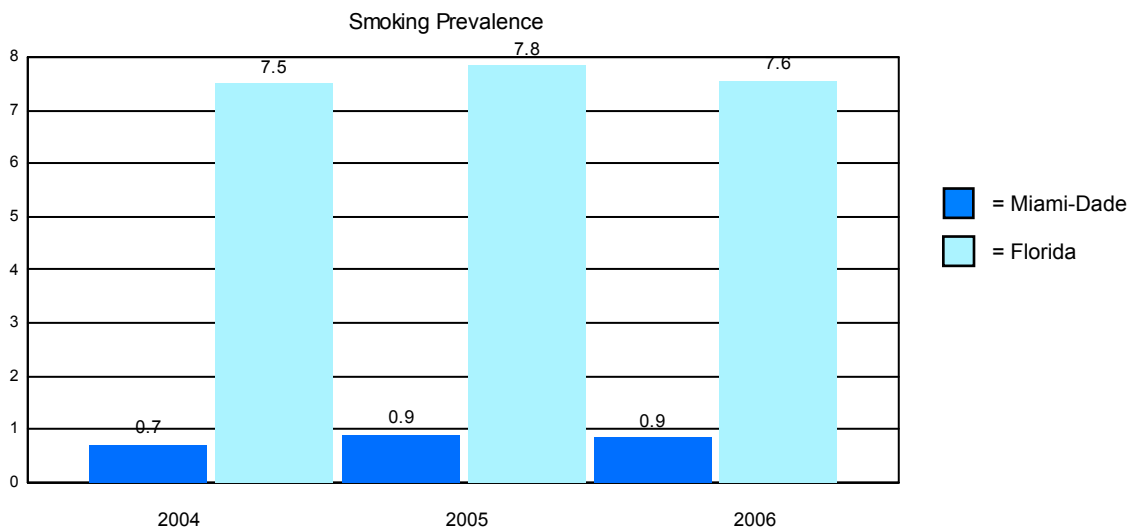


■ = Miami-Dade  
■ = Florida

## MCH Health Problem Analysis for Miami-Dade Calendar Year 2006

### Reported Smoking Prevalence in Pregnancy

	Mothers Who Smoked	Percentage of Births
<b>2004</b>		
Miami-Dade	231	0.72
Florida	16,341	7.49
<b>2005</b>		
Miami-Dade	292	0.90
Florida	17,719	7.83
<b>2006</b>		
Miami-Dade	288	0.85
Florida	17,930	7.56



Data Source: Florida Department of Health, Office of Vital Statistics

### Pediatric AIDS Cases Among Persons 0 - 4 Years of Age

	2004	2005	2006
Miami-Dade	4	5	2
Florida	15	16	17

Data Source: Florida Department of Health, Bureau of HIV/AIDS

### CHD Prenatal Care Clients Offered HIV Testing

2004		2005		2006	
Miami-Dade	Florida	Miami-Dade	Florida	Miami-Dade	Florida
93.44%	86.34%	89.94%	83.60%	91.94%	82.75%

**MCH Health Problem Analysis for  
Miami-Dade  
Calendar Year 2006**

**WIC Services**

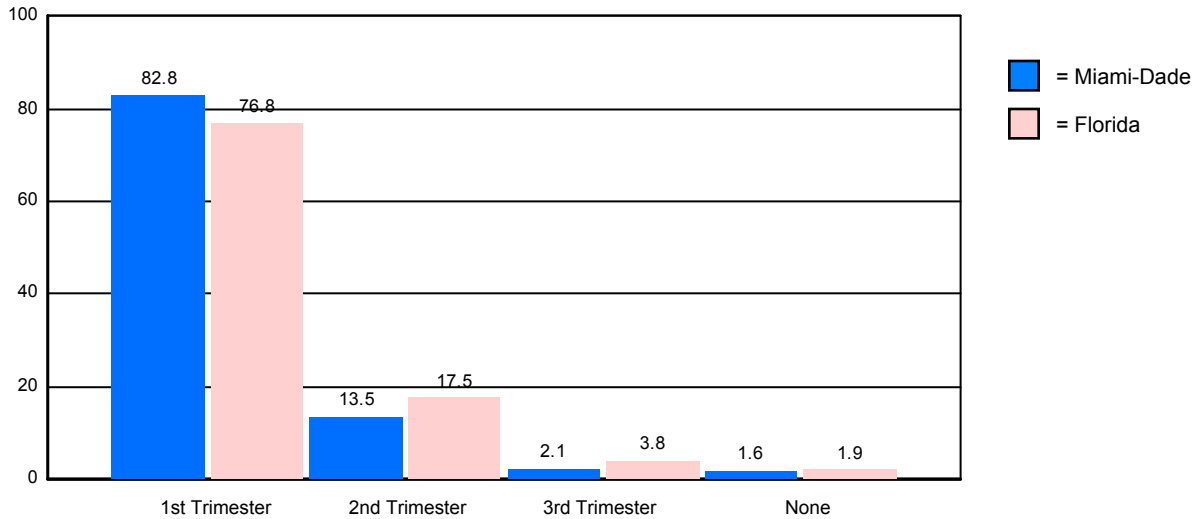
	Persons Eligible for WIC	Percentage Served by WIC
2004		
Miami-Dade	94,225	65.55
Florida	538,421	64.27
2005		
Miami-Dade	96,114	68.99
Florida	556,140	67.27
2006		
Miami-Dade	97,560	64.69
Florida	571,271	64.22

Data Source: Florida Department of Health, WIC & Nutrition Services

**Prenatal Care by Trimester of Pregnancy**

	1st Trimester	2nd Trimester	3rd Trimester	No Prenatal Care
Miami-Dade	82.77%	13.53%	2.07%	1.62%
Florida	76.77%	17.54%	3.78%	1.91%

Prenatal Care by Trimester



Data Source: Florida Department of Health, Office of Vital Statistics

**Immunizations Among 2-Year-Old CHD Clients**

	Number Immunized		Percentage Immunized	
	Miami-Dade	Florida	Miami-Dade	Florida
2004	696	18,481	63.22	80.17
2005	579	16,750	70.44	86.02
2006	0	0	0.00	0.00

Data Source: Florida Department of Health, Bureau of Immunizations

**MCH Health Problem Analysis for  
Miami-Dade  
Calendar Year 2006**

**Healthy Start Prenatal Screening and Services**

	2004		2005		2006	
	Miami-Dade	Florida	Miami-Dade	Florida	Miami-Dade	Florida
Offered Rate %	66.22	87.41	77.13	91.17	75.08	88.03
Screening Rate %	47.16	59.73	59.05	67.36	54.94	66.38
Consent Rate %	71.21	68.33	76.56	73.89	73.17	75.40

	Number		Percentage	
	Miami-Dade	Florida	Miami-Dade	Florida
Estimated Number of Pregnant Women	33,684	235,894		
Offered Screen	25,289	207,658	75.08	88.03
Consenting to Screen	18,505	156,579	73.17	75.40
Positive Screen + Referred	13,234	95,640	71.52	61.08
Consenting to HS Participation	12,462	89,739	94.17	93.83
Received Initial Contact	7,840	61,041	62.91	68.02
Need Initial Assessment	4,261	35,860	54.35	58.75
Received Initial Assessment	3,654	36,239	85.75	101.06
Need Ongoing Care Coordination	5,018	38,759	64.01	63.50

	Miami-Dade			Florida	
	Clients	Percentage of Clients	Encounters per Client	Services per Encounter	Percentage of Clients
Total Receiving HS Prenatal Service	16,686		4.31	3.46	
Total IC/IA Only	2,267	13.59	3.02	2.84	17.75
Total IC/IA/Other HS Service	566	3.39	3.07	5.93	5.68
Track or Not Face-to-Face	4,020	24.09	4.56	3.14	18.46
Face-to-Face, without FSP	2,687	16.10	6.38	4.67	14.89
Face-to-Face, with FSP	1,446	8.67	9.93	3.49	6.41
Unable to Locate	3,152	18.89	2.45	2.48	12.24
Unable to Complete Initial Contact	518	3.10	3.00	2.03	14.20
Unable to Complete Initial Assessment	4	0.02	2.00	2.38	0.15

	Miami-Dade		
	Clients	Services	Services/Client
Nutritional Assessment and Counseling	1,113	6,972	6.26
Psychosocial Counseling	1,089	7,856	7.21
Parenting Education	3,630	22,096	6.09
Childbirth Education	1,155	15,645	13.55
Breastfeeding Education	2,998	8,971	2.99
Smoking Cessation Counseling	1,515	2,827	1.87
Interconceptional Education & Counseling	345	1,053	3.05

**Pregnant Drug-Abusing Women**

	Clients	Encounters/Client	Services/Encounter
Miami-Dade	143	12.23	3.21
Florida	2,783	9.14	4.22

**MCH Health Problem Analysis for  
Miami-Dade  
Calendar Year 2006**

**Healthy Start Infant Screening and Services**

	2004		2005		2006	
	Miami-Dade	Florida	Miami-Dade	Florida	Miami-Dade	Florida
Screening Rate %	74.98	69.62	75.59	72.94	85.14	80.26

	Number		Percentage	
	Miami-Dade	Florida	Miami-Dade	Florida
Total Number of Births	33,684	235,894		
Consenting to Screen	28,679	189,321	85.14	80.26
Positive Screen + Referred	3,660	26,258	12.76	13.87
Consenting to HS Participation	3,555	22,795	97.13	86.81
Received Initial Contact	2,201	37,266	61.91	163.48
Need Initial Assessment	758	17,928	34.44	48.11
Received Initial Assessment	650	25,832	85.75	144.09
Need Ongoing Care Coordination	1,181	23,610	53.66	63.36

	Miami-Dade			Florida
	Clients	Percentage of Clients	Encounters per Client	Percentage of Clients
Total Receiving HS Infant Service	5,327		6.65	
Total IC/IA Only	885	16.61	2.82	23.58
Total IC/IA/Other HS Service	357	6.70	4.48	3.80
Track or Not Face-to-Face	747	14.02	4.36	12.92
Face-to-Face, without FSP	720	13.52	16.16	11.73
Face-to-Face, with FSP	362	6.80	26.59	5.93
Unable to Locate	799	15.00	4.34	7.89
Unable to Complete Initial Contact	200	3.75	3.11	24.04
Unable to Complete Initial Assessment	1	0.02	1.00	0.21

	Miami-Dade		
	Clients	Services	Services/Client
Nutritional Assessment and Counseling	174	1,231	7.07
Psychosocial Counseling	438	3,755	8.57
Parenting Education	1,247	20,544	16.47
Childbirth Education	1	2	2.00
Breastfeeding Education	523	3,205	6.13
Smoking Cessation Counseling	506	1,647	3.25
Interconceptional Education & Counseling	175	886	5.06

**Substance-exposed Newborns**

	Clients	Encounters/Client	Services/Encounter
Miami-Dade	255	25.23	3.24
Florida	2,550	13.22	4.16

## Attachment II-A.

### Births by Zip-code, North Miami-Dade County, 2003

Zip Code	All Births	Births to Unwed Mothers		Births to Mothers Age 10-19		Low Birth Weight Births (<2,500 grams)		Gestation < 37 Weeks		Prenatal Care Started in First Trimester	
		Number	Percent	Number	Percent	Number	Percent	Number	Percent	Number	Percent
33010	532	254	47.7%	62	11.7%	36	6.8%	33	6.2%	486	91.4%
33012	823	331	40.2%	80	9.7%	49	6.0%	63	7.7%	762	92.6%
33013	338	134	39.6%	35	10.4%	18	5.3%	20	5.9%	315	93.2%
33014	539	197	36.5%	39	7.2%	40	7.4%	57	10.6%	497	92.2%
33015	959	329	34.3%	57	5.9%	53	5.5%	76	7.9%	887	92.5%
33016	625	246	39.4%	58	9.3%	54	8.6%	46	7.4%	585	93.6%
33018	516	140	27.1%	32	6.2%	33	6.4%	41	7.9%	487	94.4%
33054	493	359	72.8%	108	21.9%	78	15.8%	78	15.8%	389	78.9%
33055	686	376	54.8%	82	12.0%	69	10.1%	70	10.2%	593	86.4%
33056	547	392	71.7%	88	16.1%	73	13.3%	90	16.5%	461	84.3%
33127	518	374	72.2%	91	17.6%	65	12.5%	69	13.3%	425	82.0%
33137	236	125	53.0%	18	7.6%	33	14.0%	31	13.1%	201	85.2%
33138	396	184	46.5%	38	9.6%	49	12.4%	55	13.9%	349	88.1%
33139	354	117	33.1%	10	2.8%	23	6.5%	26	7.3%	333	94.1%
33140	268	37	13.8%	4	1.5%	25	9.3%	26	9.7%	256	95.5%
33141	493	199	40.4%	18	3.7%	33	6.7%	44	8.9%	451	91.5%
33142	841	634	75.4%	157	18.7%	86	10.2%	104	12.4%	702	83.5%
33147	824	628	76.2%	181	22.0%	95	11.5%	93	11.3%	671	81.4%
33150	513	345	67.3%	79	15.4%	50	9.7%	59	11.5%	403	78.6%
33154	178	28	15.7%	4	2.2%	5	2.8%	15	8.4%	169	94.9%
33160	400	83	20.8%	7	1.8%	35	8.8%	42	10.5%	365	91.3%
33161	910	456	50.1%	79	8.7%	101	11.1%	112	12.3%	768	84.4%
33162	748	392	52.4%	81	10.8%	81	10.8%	109	14.6%	633	84.6%
33167	297	187	63.0%	51	17.2%	40	13.5%	42	14.1%	246	82.8%
33168	398	208	52.3%	41	10.3%	50	12.6%	49	12.3%	335	84.2%
33169	620	379	61.1%	61	9.8%	82	13.2%	92	14.8%	504	81.3%
33179	506	185	36.6%	28	5.5%	26	5.1%	39	7.7%	448	88.5%
33180	284	41	14.4%	3	1.1%	16	5.6%	17	6.0%	272	95.8%
33181	299	109	36.5%	16	5.4%	21	7.0%	30	10.0%	261	87.3%
<b>North Miami-Dade</b>	<b>15,141</b>	<b>7,469</b>	<b>49.3%</b>	<b>1,608</b>	<b>10.6%</b>	<b>1,419</b>	<b>9.4%</b>	<b>1,628</b>	<b>10.8%</b>	<b>13,254</b>	<b>87.5%</b>
<b>Miami-Dade</b>	<b>32,277</b>	<b>10,733</b>	<b>33.3%</b>	<b>2,985</b>	<b>9.2%</b>	<b>2,766</b>	<b>8.6%</b>	<b>3,248</b>	<b>10.1%</b>	<b>28,729</b>	<b>89.0%</b>

Source: Florida Department of Health, Office of Vital Statistics. These data correspond to those published in the Florida Vital Statistics Annual Report for 2003.

## Attachment II-A (Continued).

### Births by Zip-code, Central Miami-Dade County, 2003

Zip Code	All Births	Births to Unwed Mothers		Births to Mothers Age 10-19		Low Birth Weight Births (<2,500 grams)		Gestation < 37 Weeks		Prenatal Care Started in First Trimester	
		Number	Percent	Number	Percent	Number	Percent	Number	Percent	Number	Percent
33109	5	1	20.0%	0	0.0%	2	40.0%	2	40.0%	5	100.0%
33122	5	2	40.0%	0	0.0%	0	0.0%	1	20.0%	5	100.0%
33125	655	378	57.7%	83	12.7%	44	6.7%	60	9.2%	560	85.5%
33126	561	231	41.2%	37	6.6%	34	6.1%	46	8.2%	505	90.0%
33128	113	79	69.9%	18	15.9%	9	8.0%	13	11.5%	92	81.4%
33129	150	23	15.3%	4	2.7%	18	12.0%	11	7.3%	144	96.0%
33130	278	168	60.4%	33	11.9%	13	4.7%	31	11.2%	239	86.0%
33131	107	9	8.4%	1	0.9%	12	11.2%	12	11.2%	103	96.3%
33132	34	12	35.3%	3	8.8%	3	8.8%	4	11.8%	33	97.1%
33133	368	119	32.3%	19	5.2%	23	6.3%	37	10.1%	334	90.8%
33134	378	70	18.5%	11	2.9%	42	11.1%	47	12.4%	365	96.6%
33135	422	248	58.8%	49	11.6%	26	6.2%	39	9.2%	357	84.6%
33136	261	193	73.9%	53	20.3%	44	16.9%	54	20.7%	207	79.3%
33143	366	92	25.1%	17	4.6%	28	7.7%	44	12.0%	340	92.9%
33144	270	118	43.7%	18	6.7%	21	7.8%	27	10.0%	252	93.3%
33145	268	93	34.7%	10	3.7%	17	6.3%	21	7.8%	253	94.4%
33146	124	8	6.5%	0	0.0%	4	3.2%	7	5.6%	120	96.8%
33149	198	8	4.0%	2	1.0%	12	6.1%	15	7.6%	193	97.5%
33155	455	120	26.4%	22	4.8%	27	5.9%	34	7.5%	425	93.4%
33165	523	167	31.9%	27	5.2%	24	4.6%	31	5.9%	488	93.3%
33166	296	75	25.3%	15	5.1%	27	9.1%	23	7.8%	276	93.2%
33172	516	164	31.8%	32	6.2%	38	7.4%	39	7.6%	482	93.4%
33173	369	92	24.9%	17	4.6%	40	10.8%	45	12.2%	356	96.5%
33174	350	131	37.4%	29	8.3%	27	7.7%	33	9.4%	318	90.9%
33175	539	156	28.9%	32	5.9%	35	6.5%	53	9.8%	509	94.4%
33178	592	62	10.5%	7	1.2%	51	8.6%	63	10.6%	573	96.8%
33182	160	31	19.4%	4	2.5%	15	9.4%	16	10.0%	157	98.1%
33183	470	123	26.2%	22	4.7%	44	9.4%	51	10.9%	440	93.6%
33184	212	66	31.1%	10	4.7%	14	6.6%	26	12.3%	197	92.9%
33185	249	38	15.3%	8	3.2%	17	6.8%	19	7.6%	238	95.6%
33193	636	184	28.9%	37	5.8%	48	7.5%	67	10.5%	596	93.7%
33194	14	3	21.4%	1	7.1%	0	0.0%	1	7.1%	12	85.7%
<b>Central Miami-Dade</b>	<b>9,944</b>	<b>3,264</b>	<b>32.8%</b>	<b>621</b>	<b>6.2%</b>	<b>759</b>	<b>7.6%</b>	<b>972</b>	<b>9.8%</b>	<b>9,174</b>	<b>92.3%</b>
<b>Miami-Dade</b>	<b>32,277</b>	<b>10,733</b>	<b>33.3%</b>	<b>2,985</b>	<b>9.2%</b>	<b>2,766</b>	<b>8.6%</b>	<b>3,248</b>	<b>10.1%</b>	<b>28,729</b>	<b>89.0%</b>

Source: Florida Department of Health, Office of Vital Statistics. These data correspond to those published in the Florida Vital Statistics Annual Report for 2003.

## Attachment II-A (Continued).

### Births by Zip-code, South Miami-Dade County, 2003

Zip Code	All Births	Births to Unwed Mothers		Births to Mothers Age 10-19		Low Birth Weight Births (<2,500 grams)		Gestation < 37 Weeks		Prenatal Care Started in First Trimester	
		Number	Percent	Number	Percent	Number	Percent	Number	Percent	Number	Percent
33030	788	521	66.1%	152	19.3%	61	7.7%	61	7.7%	582	73.9%
33031	55	13	23.6%	0	0.0%	6	10.9%	8	14.5%	51	92.7%
33032	432	249	57.6%	74	17.1%	40	9.3%	40	9.3%	353	81.7%
33033	555	326	58.7%	97	17.5%	41	7.4%	57	10.3%	453	81.6%
33034	351	230	65.5%	71	20.2%	38	10.8%	34	9.7%	267	76.1%
33035	52	15	28.8%	6	11.5%	4	7.7%	3	5.8%	46	88.5%
33039	1	1	100.0%	0	0.0%	0	0.0%	0	0.0%	1	100.0%
33156	292	35	12.0%	6	2.1%	15	5.1%	15	5.1%	282	96.6%
33157	898	387	43.1%	93	10.4%	81	9.0%	88	9.8%	777	86.5%
33158	64	5	7.8%	3	4.7%	4	6.3%	6	9.4%	63	98.4%
33170	167	112	67.1%	26	15.6%	31	18.6%	27	16.2%	135	80.8%
33176	598	181	30.3%	41	6.9%	48	8.0%	47	7.9%	551	92.1%
33177	771	286	37.1%	71	9.2%	45	5.8%	53	6.9%	707	91.7%
33186	885	188	21.2%	33	3.7%	70	7.9%	85	9.6%	835	94.4%
33187	213	51	23.9%	21	9.9%	15	7.0%	22	10.3%	196	92.0%
33189	323	127	39.3%	33	10.2%	27	8.4%	32	9.9%	295	91.3%
33190	100	42	42.0%	11	11.0%	10	10.0%	12	12.0%	91	91.0%
33196	647	129	19.9%	18	2.8%	52	8.0%	58	9.0%	616	95.2%
<b>South Miami-Dade</b>	<b>7,192</b>	<b>2,898</b>	<b>40.3%</b>	<b>756</b>	<b>10.5%</b>	<b>588</b>	<b>8.2%</b>	<b>648</b>	<b>9.0%</b>	<b>6,301</b>	<b>87.6%</b>
<b>Miami-Dade</b>	<b>32,277</b>	<b>10,733</b>	<b>33.3%</b>	<b>2,985</b>	<b>9.2%</b>	<b>2,766</b>	<b>8.6%</b>	<b>3,248</b>	<b>10.1%</b>	<b>28,729</b>	<b>89.0%</b>

Source: Florida Department of Health, Office of Vital Statistics. These data correspond to those published in the Florida Vital Statistics Annual Report for 2003.

## Attachment II-B.

## Late/No Prenatal Care by Zip Code, North Miami-Dade 2000-2003

Zip Code	2000			2001			2002			2003		
	Live Births	Late/No Care	Percent	Live Births	Late/No Care	Percent	Live Births	Late/No Care	Percent	Live Births	Late/No Care	Percent
33010	570	14	2.5%	534	6	1.1%	538	5	0.9%	532	6	1.1%
33012	821	15	1.8%	819	5	0.6%	811	3	0.4%	823	8	1.0%
33013	374	7	1.9%	402	3	0.7%	356	3	0.8%	338	2	0.6%
33014	491	6	1.2%	530	6	1.1%	517	2	0.4%	539	5	0.9%
33015	888	15	1.7%	866	6	0.7%	839	4	0.5%	959	6	0.6%
33016	665	7	1.1%	644	4	0.6%	642	6	0.9%	625	2	0.3%
33018	519	3	0.6%	538	5	0.9%	577	3	0.5%	516	4	0.8%
33054	490	16	3.3%	481	12	2.5%	494	27	5.5%	493	18	3.7%
33055	719	21	2.9%	716	19	2.7%	676	12	1.8%	686	19	2.8%
33056	537	16	3.0%	585	13	2.2%	551	19	3.4%	547	12	2.2%
33127	532	14	2.6%	502	18	3.6%	453	15	3.3%	518	14	2.7%
33137	260	12	4.6%	246	16	6.5%	263	5	1.9%	236	5	2.1%
33138	397	6	1.5%	405	13	3.2%	423	8	1.9%	396	8	2.0%
33139	278	5	1.8%	289	1	0.3%	307	3	1.0%	354	3	0.8%
33140	239	1	0.4%	244	1	0.4%	239	0	0.0%	268	2	0.7%
33141	494	7	1.4%	485	9	1.9%	504	8	1.6%	493	5	1.0%
33142	848	44	5.2%	878	40	4.6%	847	23	2.7%	841	31	3.7%
33147	1003	38	3.8%	890	41	4.6%	857	35	4.1%	824	27	3.3%
33150	495	20	4.0%	505	18	3.6%	467	22	4.7%	513	17	3.3%
33154	141	1	0.7%	165	0	0.0%	184	0	0.0%	178	2	1.1%
33160	325	4	1.2%	347	3	0.9%	323	4	1.2%	400	9	2.3%
33161	991	28	2.8%	976	29	3.0%	933	18	1.9%	910	28	3.1%
33162	805	17	2.1%	728	21	2.9%	673	12	1.8%	748	19	2.5%
33167	335	14	4.2%	312	11	3.5%	297	9	3.0%	297	9	3.0%
33168	436	10	2.3%	448	12	2.7%	426	11	2.6%	398	9	2.3%
33169	689	21	3.0%	716	30	4.2%	615	16	2.6%	620	26	4.2%
33179	516	7	1.4%	529	8	1.5%	509	6	1.2%	506	10	2.0%
33180	231	1	0.4%	263	3	1.1%	285	0	0.0%	284	4	1.4%
33181	294	9	3.1%	336	7	2.1%	269	3	1.1%	299	8	2.7%
<b>North Miami-Dade</b>	<b>15,383</b>	<b>379</b>	<b>2.5%</b>	<b>15,379</b>	<b>360</b>	<b>2.3%</b>	<b>14,875</b>	<b>282</b>	<b>1.9%</b>	<b>15,141</b>	<b>318</b>	<b>2.1%</b>
<b>Miami-Dade</b>	<b>16,005</b>	<b>659</b>	<b>4.1%</b>	<b>16,013</b>	<b>631</b>	<b>3.9%</b>	<b>15,438</b>	<b>506</b>	<b>3.3%</b>	<b>32,277</b>	<b>511</b>	<b>1.6%</b>

Source: Florida Department of Health, Office of Vital Statistics. These data correspond to those published in the Florida Vital Statistics Annual Report

**Attachment II-B (Continued).**

**Late/No Prenatal Care by Zip Code, Central Miami-Dade 2000-2003**

Zip Code	2000			2001			2002			2003		
	Live Births	Late/No Care	Percent	Live Births	Late/No Care	Percent	Live Births	Late/No Care	Percent	Live Births	Late/No Care	Percent
33109	6	0	0.0%	4	0	0.0%	6	0	0.0%	5	0	0.0%
33122	4	0	0.0%	6	0	0.0%	4	0	0.0%	5	0	0.0%
33125	654	13	2.0%	667	11	1.6%	660	10	1.5%	655	12	1.8%
33126	548	8	1.5%	608	7	1.2%	535	3	0.6%	561	4	0.7%
33128	101	5	5.0%	106	6	5.7%	131	5	3.8%	113	2	1.8%
33129	147	2	1.4%	136	1	0.7%	143	0	0.0%	150	1	0.7%
33130	257	6	2.3%	266	5	1.9%	290	12	4.1%	278	5	1.8%
33131	75	1	1.3%	97	1	1.0%	101	2	2.0%	107	0	0.0%
33132	44	3	6.8%	45	1	2.2%	40	0	0.0%	34	0	0.0%
33133	353	3	0.8%	368	3	0.8%	389	4	1.0%	368	5	1.4%
33134	366	2	0.5%	372	2	0.5%	389	1	0.3%	378	1	0.3%
33135	401	8	2.0%	391	8	2.0%	388	5	1.3%	422	6	1.4%
33136	269	14	5.2%	229	12	5.2%	264	9	3.4%	261	9	3.4%
33143	395	6	1.5%	354	2	0.6%	362	6	1.7%	366	2	0.5%
33144	220	2	0.9%	255	0	0.0%	247	4	1.6%	270	1	0.4%
33145	269	2	0.7%	315	1	0.3%	295	1	0.3%	268	1	0.4%
33146	123	0	0.0%	123	0	0.0%	126	0	0.0%	124	0	0.0%
33149	180	0	0.0%	195	1	0.5%	157	0	0.0%	198	2	1.0%
33155	485	3	0.6%	456	4	0.9%	482	3	0.6%	455	5	1.1%
33165	525	4	0.8%	540	1	0.2%	517	0	0.0%	523	1	0.2%
33166	289	7	2.4%	303	3	1.0%	277	3	1.1%	296	3	1.0%
33172	499	5	1.0%	527	6	1.1%	518	7	1.4%	516	3	0.6%
33173	397	9	2.3%	375	2	0.5%	386	1	0.3%	369	1	0.3%
33174	310	5	1.6%	293	5	1.7%	302	4	1.3%	350	2	0.6%
33175	550	6	1.1%	592	4	0.7%	528	3	0.6%	539	1	0.2%
33178	406	2	0.5%	499	1	0.2%	527	3	0.6%	592	2	0.3%
33182	197	1	0.5%	181	1	0.6%	204	0	0.0%	160	1	0.6%
33183	478	1	0.2%	470	3	0.6%	448	4	0.9%	470	4	0.9%
33184	203	1	0.5%	184	0	0.0%	170	0	0.0%	212	0	0.0%
33185	147	1	0.7%	161	1	0.6%	218	1	0.5%	249	3	1.2%
33192	1	0	0.0%	*	9	*	1	0	0.0%	*	0	*
33193	656	5	0.8%	642	0	0.0%	662	1	0.2%	636	7	1.1%
33194	1	0	0.0%	4	1	25.0%	5	0	0.0%	14	0	0.0%
<b>Central Miami-Dade</b>	<b>9,556</b>	<b>125</b>	<b>1.3%</b>	<b>9,764</b>	<b>102</b>	<b>1.0%</b>	<b>9,772</b>	<b>92</b>	<b>0.9%</b>	<b>9,944</b>	<b>84</b>	<b>0.8%</b>
<b>Miami-Dade</b>	<b>32,028</b>	<b>659</b>	<b>2.1%</b>	<b>32,169</b>	<b>631</b>	<b>2.0%</b>	<b>31,853</b>	<b>506</b>	<b>1.6%</b>	<b>32,277</b>	<b>511</b>	<b>1.6%</b>

Source: Florida Department of Health, Office of Vital Statistics. These data correspond to those published in the Florida Vital Statistics Annual Report for 2000, 2001, 2002 and 2003.

**Attachment II-B (Continued).**

**Late/No Prenatal Care by Zip Code, South Miami-Dade 2000-2003**

Zip Code	2000			2001			2002			2003		
	Live Births	Late/No Care	Percent	Live Births	Late/No Care	Percent	Live Births	Late/No Care	Percent	Live Births	Late/No Care	Percent
<b>33030</b>	794	42	5.3%	842	58	6.9%	867	49	5.7%	788	32	4.1%
<b>33031</b>	67	3	4.5%	43	0	0.0%	52	0	0.0%	55	1	1.8%
<b>33032</b>	377	11	2.9%	377	11	2.9%	426	12	2.8%	432	6	1.4%
<b>33033</b>	498	27	5.4%	518	22	4.2%	546	20	3.7%	555	8	1.4%
<b>33034</b>	337	14	4.2%	294	19	6.5%	341	19	5.6%	351	11	3.1%
<b>33035</b>	51	2	3.9%	49	0	0.0%	48	0	0.0%	52	1	1.9%
<b>33039</b>	1	1	100.0%	*	*	*	2	0	0.0%	1	0	0.0%
<b>33156</b>	323	3	0.9%	300	2	0.7%	306	1	0.3%	292	0	0.0%
<b>33157</b>	858	15	1.7%	828	15	1.8%	874	10	1.1%	898	18	2.0%
<b>33158</b>	56	0	0.0%	61	0	0.0%	67	0	0.0%	64	0	0.0%
<b>33170</b>	199	11	5.5%	160	7	4.4%	189	5	2.6%	167	1	0.6%
<b>33176</b>	648	7	1.1%	657	6	0.9%	644	4	0.6%	598	7	1.2%
<b>33177</b>	746	7	0.9%	760	16	2.1%	798	6	0.8%	771	12	1.6%
<b>33186</b>	848	2	0.2%	839	4	0.5%	833	3	0.4%	885	4	0.5%
<b>33187</b>	243	1	0.4%	272	1	0.4%	237	0	0.0%	213	0	0.0%
<b>33189</b>	332	4	1.2%	309	1	0.3%	319	2	0.6%	323	7	2.2%
<b>33190</b>	90	1	1.1%	87	1	1.1%	99	0	0.0%	100	0	0.0%
<b>33196</b>	621	4	0.6%	630	6	1.0%	558	1	0.2%	647	1	0.2%
<b>South Miami-Dade</b>	<b>7,089</b>	<b>155</b>	<b>2.2%</b>	<b>7,026</b>	<b>169</b>	<b>2.4%</b>	<b>7,206</b>	<b>132</b>	<b>1.8%</b>	<b>7,192</b>	<b>109</b>	<b>1.5%</b>
<b>Miami-Dade</b>	<b>32,028</b>	<b>659</b>	<b>11.0%</b>	<b>32,169</b>	<b>631</b>	<b>12.2%</b>	<b>31,853</b>	<b>506</b>	<b>11.0%</b>	<b>32,277</b>	<b>511</b>	<b>11.0%</b>

Source: Florida Department of Health, Office of Vital Statistics. These data correspond to those published in the Florida Vital Statistics Annual Report for 2000, 2001, 2002 and 2003.

### Attachment II-C.

#### Live Births, Fetal, Infant, Neonatal, and Post Neonatal Mortality Rates (per 1,000 Live Births) by Zip Code in North Miami-Dade County, 2003

Zip Code	Total Live Births	Fetal Deaths	Fetal Mortality Rate	Infant Deaths	Infant Mortality Rate	Neonatal Deaths	Neonatal Mortality Rate	Post neonatal Deaths	Post Neonatal Mortality Rate
33010	532	3	5.6	1	1.9	1	1.9	0	0.0
33012	823	2	2.4	5	6.1	4	4.9	1	1.2
33013	338	3	8.9	0	0.0	0	0.0	0	0.0
33014	539	1	1.9	0	0.0	0	0.0	0	0.0
33015	959	7	7.3	5	5.2	2	2.1	3	3.1
33016	625	4	6.4	3	4.8	2	3.2	1	1.6
33018	516	2	3.9	4	7.8	3	5.8	1	1.9
33054	493	8	16.2	4	8.1	2	4.1	2	4.1
33055	686	10	14.6	4	5.8	2	2.9	2	2.9
33056	547	8	14.6	9	16.5	6	11.0	3	5.5
33127	518	12	23.2	5	9.7	2	3.9	3	5.8
33137	236	3	12.7	3	12.7	1	4.2	2	8.5
33138	396	6	15.2	1	2.5	0	0.0	1	2.5
33139	354	0	0.0	0	0.0	0	0.0	0	0.0
33140	268	2	7.5	0	0.0	0	0.0	0	0.0
33141	493	3	6.1	1	2.0	1	2.0	0	0.0
33142	841	10	11.9	7	8.3	4	4.8	3	3.6
33147	824	11	13.3	10	12.1	8	9.7	2	2.4
33150	513	6	11.7	4	7.8	3	5.8	1	1.9
33154	178	4	22.5	1	5.6	0	0.0	1	5.6
33160	400	1	2.5	2	5.0	2	5.0	0	0.0
33161	910	16	17.6	8	8.8	5	5.5	3	3.3
33162	748	12	16.0	7	9.4	3	4.0	4	5.3
33167	297	2	6.7	5	16.8	3	10.1	2	6.7
33168	398	6	15.1	5	12.6	3	7.5	2	5.0
33169	620	11	17.7	7	11.3	5	8.1	2	3.2
33179	506	3	5.9	2	4.0	1	2.0	1	2.0
33180	284	0	0.0	1	3.5	1	3.5	0	0.0
33181	299	6	20.1	3	10.0	1	3.3	2	6.7
<b>North Miami-Dade</b>	<b>15,141</b>	<b>162</b>	<b>10.7</b>	<b>107</b>	<b>7.1</b>	<b>65</b>	<b>4.3</b>	<b>42</b>	<b>2.8</b>
<b>Miami-Dade</b>	<b>32,277</b>	<b>278</b>	<b>8.6</b>	<b>193</b>	<b>6.0</b>	<b>123</b>	<b>3.8</b>	<b>70</b>	<b>2.2</b>

Source: Florida Department of Health, Office of Vital Statistics. These data correspond to those published in the Florida Vital Statistics Annual Report for 2003.

\* Zip Codes with zero deaths have been excluded from the table

**Attachment II-C (Continued).**

**Live Births, Fetal, Infant, Neonatal, and Post Neonatal Mortality Rates by Zip Code in Central Miami-Dade County, 2003**

Zip Code	Total Live Births	Fetal Deaths	Fetal Mortality Rate	Infant Deaths	Infant Mortality Rate	Neonatal Deaths	Neonatal Mortality Rate	Post Neonatal Deaths	Post Neonatal Mortality Rate
33125	655	6	9.2	5	7.6	3	4.6	2	3.1
33126	561	1	1.8	2	3.6	2	3.6	0	0.0
33128	113	1	8.8	1	8.8	0	0.0	1	8.8
33129	150	1	6.7	0	0.0	0	0.0	0	0.0
33130	278	2	7.2	1	3.6	0	0.0	1	3.6
33131	107	0	0.0	1	9.3	0	0.0	1	9.3
33133	368	5	13.6	3	8.2	1	2.7	2	5.4
33134	378	1	2.6	1	2.6	1	2.6	0	0.0
33135	422	1	2.4	2	4.7	2	4.7	0	0.0
33136	261	1	3.8	7	26.8	4	15.3	3	11.5
33143	366	2	5.5	4	10.9	4	10.9	0	0.0
33144	270	2	7.4	2	7.4	2	7.4	0	0.0
33145	268	1	3.7	1	3.7	1	3.7	0	0.0
33149	198	0	0.0	1	5.1	1	5.1	0	0.0
33155	455	4	8.8	2	4.4	2	4.4	0	0.0
33165	523	4	7.6	0	0.0	0	0.0	0	0.0
33166	296	4	13.5	1	3.4	0	0.0	1	3.4
33172	516	5	9.7	3	5.8	2	3.9	1	1.9
33173	369	4	10.8	2	5.4	1	2.7	1	2.7
33174	350	3	8.6	3	8.6	3	8.6	0	0.0
33175	539	4	7.4	1	1.9	0	0.0	1	1.9
33178	592	1	1.7	1	1.7	0	0.0	1	1.7
33182	160	0	0.0	1	6.3	1	6.3	0	0.0
33183	470	3	6.4	2	4.3	1	2.1	1	2.1
33184	212	1	4.7	0	0.0	0	0.0	0	0.0
33185	249	3	12.0	2	8.0	2	8.0	0	0.0
33193	636	1	1.6	0	0.0	0	0.0	0	0.0
<b>Central Miami-Dade</b>	<b>9,944</b>	<b>61</b>	<b>6.1</b>	<b>49</b>	<b>4.9</b>	<b>33</b>	<b>3.3</b>	<b>16</b>	<b>1.6</b>
<b>Miami-Dade</b>	<b>32,277</b>	<b>278</b>	<b>8.6</b>	<b>193</b>	<b>6.0</b>	<b>123</b>	<b>3.8</b>	<b>70</b>	<b>2.2</b>

Source: Florida Department of Health, Office of Vital Statistics. These data correspond to those published in the Florida Vital Statistics Annual

\* Zip Codes with zero deaths have been excluded from the table

**Attachment II-C (Continued).**

**Live Births, Fetal, Infant, Neonatal, and Post Neonatal Mortality Rates by Zip Code in South Miami-Dade County, 2003**

<b>Zip Code</b>	<b>Total Live Births</b>	<b>Fetal Deaths</b>	<b>Fetal Mortality Rate</b>	<b>Infant Deaths</b>	<b>Infant Mortality Rate</b>	<b>Neonatal Deaths</b>	<b>Neonatal Mortality Rate</b>	<b>Postneonatal Deaths</b>	<b>Post Neonatal Mortality Rate</b>
<b>33030</b>	788	5	6.3	3	3.8	1	1.3	2	2.5
<b>33032</b>	432	6	13.9	4	9.3	2	4.6	2	4.6
<b>33033</b>	555	4	7.2	4	7.2	1	1.8	3	5.4
<b>33034</b>	351	3	8.5	3	8.5	2	5.7	1	2.8
<b>33035</b>	52	1	19.2	0	0.0	0	0.0	0	0.0
<b>33156</b>	292	1	3.4	0	0.0	0	0.0	0	0.0
<b>33157</b>	898	8	8.9	7	7.8	5	5.6	2	2.2
<b>33170</b>	167	3	18.0	2	12.0	2	12.0	0	0.0
<b>33176</b>	598	4	6.7	2	3.3	2	3.3	0	0.0
<b>33177</b>	771	5	6.5	2	2.6	2	2.6	0	0.0
<b>33186</b>	885	2	2.3	3	3.4	3	3.4	0	0.0
<b>33187</b>	213	4	18.8	1	4.7	1	4.7	0	0.0
<b>33189</b>	323	4	12.4	2	6.2	1	3.1	1	3.1
<b>33190</b>	100	1	10.0	0	0.0	0	0.0	0	0.0
<b>33196</b>	647	4	6.2	4	6.2	3	4.6	1	1.5
<b>South Miami-Dade</b>	<b>7,192</b>	<b>55</b>	<b>7.6</b>	<b>37</b>	<b>5.1</b>	<b>25</b>	<b>3.5</b>	<b>12</b>	<b>1.7</b>
<b>Miami-Dade</b>	<b>32,277</b>	<b>278</b>	<b>8.6</b>	<b>193</b>	<b>6.0</b>	<b>123</b>	<b>3.8</b>	<b>70</b>	<b>2.2</b>

Source: Florida Department of Health, Office of Vital Statistics. These data correspond to those published in the Florida Vital Statistics Annual Report for 2003.

\* Zip Codes with zero deaths have been excluded from the table